



Tony Rago's Pre-Market Playbook

★ Overnight Range

- ES 118.50
- NQ 633.50
- VIX 20.12

- ★ **Bulls** need to hold above yest closes **6788 and 24425-- long above these**
- ★ Breakouts are above yesterday's highs **6935 and 25169 - aggressive longs** (await for confirmation with a new high and a retest of the highs from above that holds)
- ★ **Bears** need under overnight lows **short under 6751 and 24239**
- ★ Breakdown is below yest lows **6785 and 24407 -- aggressive shorts** (wait for confirmation with a new low and a retest of the lows from below that hold)
- ★ **RANGEBOUND: 2 Way trade long and shorts will work** to get the day done
- ★ Keep it simple and be patient for confirmation on either side or establish the range if we are going to be rangebound
- ★ Confirm rally continuation with sustained trade over the 30min IB High and likewise
- ★ bearish under the IB Low

ECON:

- 10:00 am Consumer sentiment (prelim)
- 12:00 pm Fed Vice Chair Philip Jefferson speaks
- 3:00 pm Consumer credit

Pre-Market Trading Levels for today

GLOBEX

NQ

★ **HIGH:** 24873.25

★ **LOW:** 24239.75

★ **Bull Case** defend the 24500 to seek the 24612, 24633, 24750, 24812, 24833, 24912, 25000, 25106, 25250, 25312, 25333, 25412, 25500, 25612, 25633, 25750, 25812, 25833

★ **Bear Case** seal the 25250 to seek the 25106, 25000, 24912, 24833, 24750, 24633, 24612, 24500, 24412, 24333, 24312, 24250, 24106, 24000

★ **Overnight Range - 633.50**

NQ (Prev. Day)

★ High 25169.00

★ Low 24407.25

★ Close 24425.25

NQ (Week Open) 25530.00

S&P 500

★ **HIGH** - 6870.00

★ **LOW** - 6751.50

★ **Bull Case:** defend the 6788 to seek the 6800, 6812, 6817, 6826, 6833, 6850, 6862, 6888, 6900, 6912, 6917, 6926, 6933

★ **Bear Case:** seal the 6912 to seek the 6900, 6888, 6877, 6850, 6833, 6826, 6817, 6812, 6800, 6788, 6777

★ **Overnight Range** - 118.50

ES (Prev Day)

★ High 6935.25

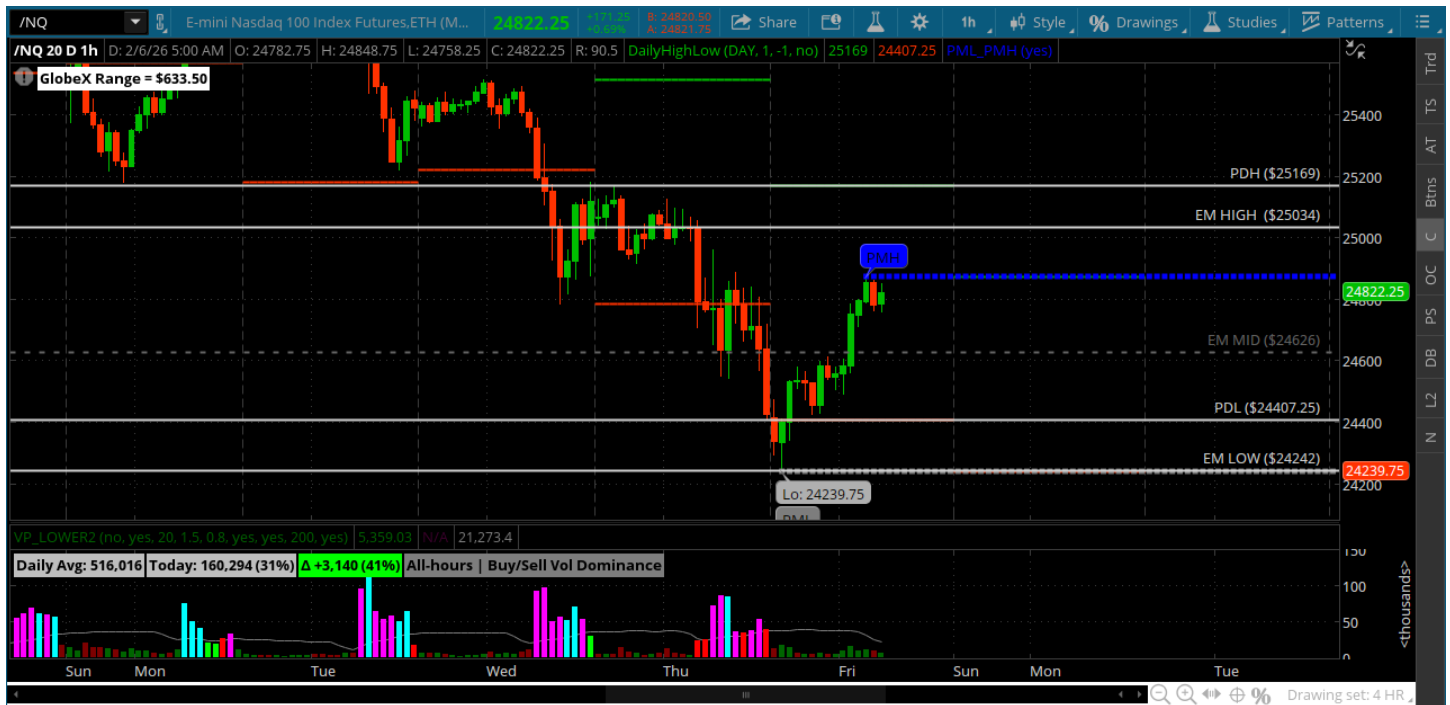
★ Low 6785.00

★ Close 6788.75

ES (Week Open) 6938.50

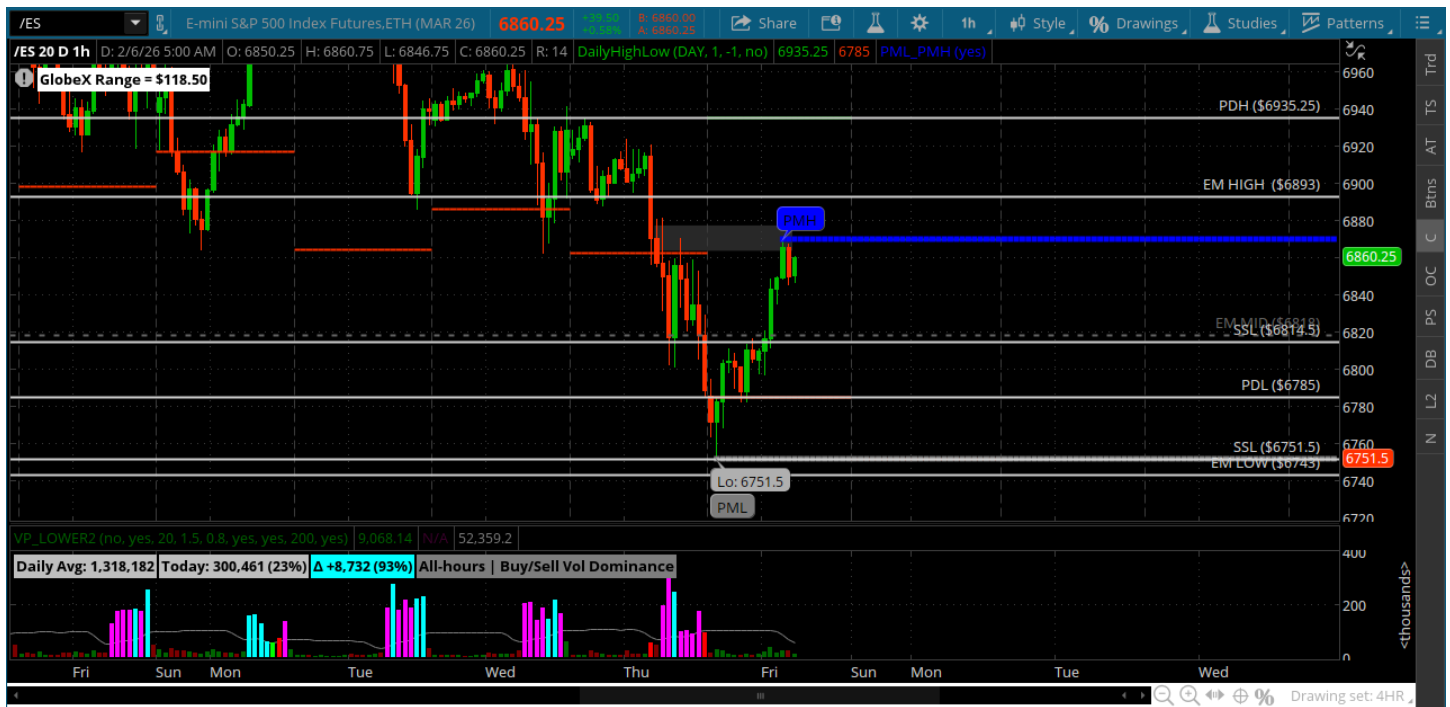
Pre-Market Charts to Watch

Friday, February 6, 2025 Pre-Market /NQ 1 Hour Chart



- Coming in we are +500 off the lows so overnight bulls are in control
- Lets see if they can get and stay above 25000 today
- The bulls need to defend the 24612 and 24500 on a backrest
- Still bearish on longer time frames - bears need to hold price under 25106 and 25000

Friday, February 6, 2025 Pre-Market /ES 1 Hour Chart



- Rally attempt overnight -- all about holding the 6800 form here for bulls
- We may hang in a range today - bulls need to close this above 6800
- Bears need to defend the 6900 -- still bearish on longer time frames until we can take out 6966
- Bears need to keep a lid on 6900 if they are going to go for new weekly lows

Disclaimer:

Disclaimer: Neither TheoTrade or any of its officers, directors, employees, other personnel, representatives, agents or independent contractors is, in such capacities, a licensed financial adviser, registered investment adviser, registered broker-dealer or FINRA|SIPC|NFA-member firm. TheoTrade does not provide investment or financial advice or make investment recommendations. TheoTrade is not in the business of transacting trades, nor does TheoTrade agree to direct your brokerage accounts or give trading advice tailored to your particular situation. Nothing contained in our content constitutes a solicitation, recommendation, promotion, or endorsement of any particular security, other investment product, transaction or investment. Trading Futures, Options on Futures, and retail off-exchange foreign currency transactions involves substantial risk of loss and is not suitable for all investors. You should carefully consider whether trading is suitable for you in light of your circumstances, knowledge, and financial resources. You may lose all or more of your initial investment. Opinions, market data, and recommendations are subject to change at any time. Past Performance is not necessarily indicative of future results.