



Tony Rago's Pre-Market Playbook

★ Overnight Range

- ES 58.75
- NQ 378.00
- VIX 18.59

- ★ **Bulls** need to hold above yest closes **6945 and 25107-- long above these**
- ★ Breakouts are above yesterday's highs **6965 and 25222 - aggressive longs** (await for confirmation with a new high and a retest of the highs from above that holds)
- ★ **Bears** need under overnight lows **short under 6921 and 24968**
- ★ Breakdown is below yest lows **6751 and 24239 -- aggressive shorts** (wait for confirmation with a new low and a retest of the lows from below that hold)
- ★ **RANGEBOUND: 2 Way trade long and shorts will work** to get the day done
- ★ Keep it simple and be patient for confirmation on either side or establish the range if we are going to be rangebound
- ★ Confirm rally continuation with sustained trade over the 30min IB High and likewise
- ★ bearish under the IB Low

ECON:

- 10:50 am Atlanta Fed President Raphael Bostic speaks
- 1:30 pm Fed governor Christopher Waller speaks
- 2:30 pm Fed governor Stephen Miran speaks

Pre-Market Trading Levels for today

GLOBEX

NQ

★ **HIGH:** 25346.75

★ **LOW:** 24968.50

★ **Bull Case** defend the 24633 to seek the 24750, 24812, 24833, 24912, 25000, 25106, 25250, 25312, 25333, 25412, 25500, 25612, 25633, 25750, 25812, 25833

★ **Bear Case** seal the 25250 to seek the 25106, 25000, 24912, 24833, 24750, 24633, 24612, 24500, 24412, 24333, 24312, 24250, 24106, 24000

★ **Overnight Range - 378.00**

NQ (Prev. Day)

★ High 25222.00

★ Low 24239.75

★ Close 25107.75

NQ (Week Open) 25153.75

S&P 500

★ **HIGH** - 6979.75

★ **LOW** - 6921.00

★ **Bull Case:** defend the 6862 to seek the 6877, 6888, 6900, 6912, 6917, 6926, 6933, 6950, 6962, 6988, 7000

★ **Bear Case:** seal the 6988 to seek the 6977, 6950, 6933, 6926, 6917, 6912, 6900, 6888, 6877, 6862, 6850, 6833, 6826, 6817, 6800, 6788

★ **Overnight Range** - 58.75

ES (Prev Day)

★ High 6965.50

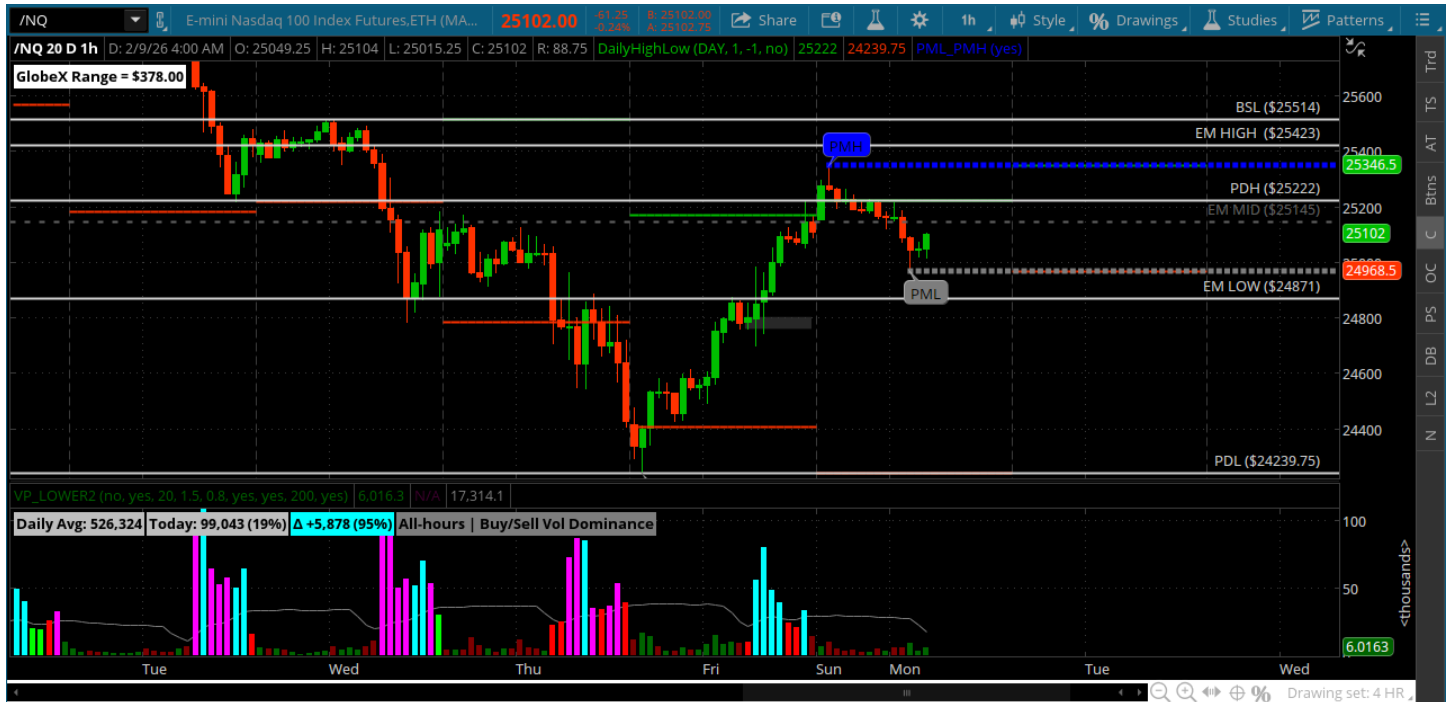
★ Low 6751.50

★ Close 6945.75

ES (Week Open) 6960.25

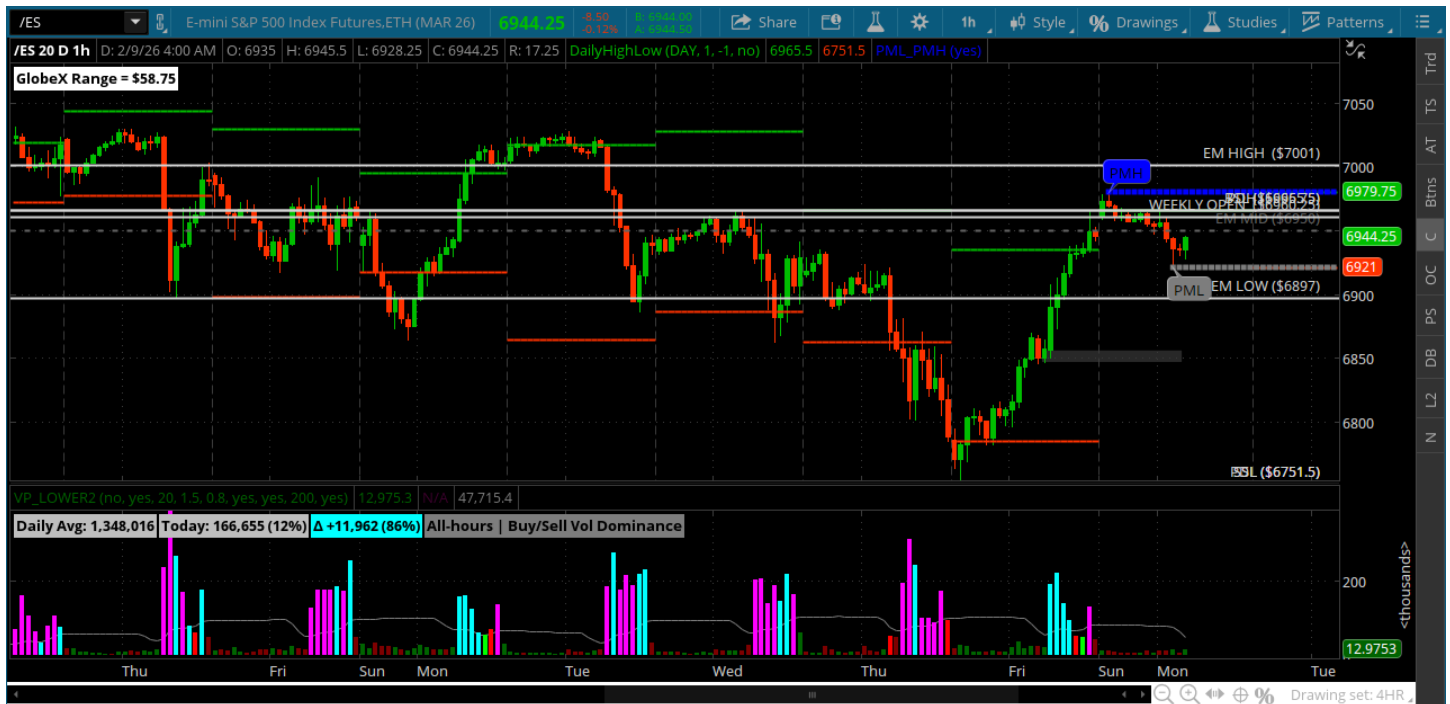
Pre-Market Charts to Watch

Monday, February 9, 2025 Pre-Market /NQ 1 Hour Chart



- Big rally back to the 25000-25250
- Key for bulls is to defend pullbacks and hold price ideally above the 24912
- Still bearish on the longer time frames however
- So key for bears would be to seal off the 25000 and move back to the 24500

Monday, February 9, 2025 Pre-Market /ES 1 Hour Chart



- Rally back into this big sideways zone 6900-7000
- Key is for bulls to defend a pullback to the 6912 and 6900
- Bears want to seal off the 6977 and move to the 6900 from pre-market levels

Disclaimer:

Disclaimer: Neither TheoTrade or any of its officers, directors, employees, other personnel, representatives, agents or independent contractors is, in such capacities, a licensed financial adviser, registered investment adviser, registered broker-dealer or FINRA|SIPC|NFA-member firm. TheoTrade does not provide investment or financial advice or make investment recommendations. TheoTrade is not in the business of transacting trades, nor does TheoTrade agree to direct your brokerage accounts or give trading advice tailored to your particular situation. Nothing contained in our content constitutes a solicitation, recommendation, promotion, or endorsement of any particular security, other investment product, transaction or investment. Trading Futures, Options on Futures, and retail off-exchange foreign currency transactions involves substantial risk of loss and is not suitable for all investors. You should carefully consider whether trading is suitable for you in light of your circumstances, knowledge, and financial resources. You may lose all or more of your initial investment. Opinions, market data, and recommendations are subject to change at any time. Past Performance is not necessarily indicative of future results.