



## *Tony Rago's Pre-Market Playbook*

---

### ★ Overnight Range

- ES 25.25
- NQ 129.00
- VIX 17.35

- ★ **Bulls** need to hold above yest closes **6984 and 25361**-- long above these
- ★ Breakouts are above yesterday's highs **7000 and 25428** - **aggressive longs** (await for confirmation with a new high and a retest of the highs from above that holds)
- ★ **Bears** need under overnight lows **short under 6972 and 25278**
- ★ Breakdown is below yest lows **6921 and 24955** -- **aggressive shorts** (wait for confirmation with a new low and a retest of the lows from below that hold)
- ★ **RANGEBOUND: 2 Way trade long and shorts will work** to get the day done
- ★ Keep it simple and be patient for confirmation on either side or establish the range if we are going to be rangebound
- ★ Confirm rally continuation with sustained trade over the 30min IB High and likewise
- ★ bearish under the IB Low

### ECON:

- 8:30 am Employment cost index
- 8:30 am Import price index (delayed report)
- 8:30 am U.S. retail sales
- 10:00 am Business inventories (delayed report)
- 12:00 pm Cleveland Fed President Beth Hammack speaks
- 1:00 pm Dallas Fed President Lorie Logan speaks

## *Pre-Market Trading Levels for today*

---

### GLOBEX

#### NQ

★ **HIGH:** 25421.50

★ **LOW:** 25278.50

★ **Bull Case** defend the 25106 to seek the 25250, 25312, 25333, 25412, 25500, 25612, 25633, 25750, 25812, 25833

★ **Bear Case** seal the 25612 to seek the 25500, 25412, 25333, 25312, 25250, 25106, 25000, 24912, 24833, 24750, 24633, 24612, 24500, 24412, 24333, 24312, 24250, 24106, 24000

★ **Overnight Range - 143.00**

#### NQ (Prev. Day)

★ High 25428.75

★ Low 24955.50

★ Close 25361.50

**NQ (Week Open) 25153.75**

## S&P 500

★ **HIGH** - 6997.50

★ **LOW** - 6972.25

★ **Bull Case:** defend the 6862 to seek the 6877, 6888, 6900, 6912, 6917, 6926, 6933, 6950, 6962, 6988, 7000

★ **Bear Case:** seal the 7026 to seek the 7017, 7012, 7000, 6988, 6977, 6950, 6933, 6926, 6917, 6912, 6900, 6888, 6877, 6862, 6850, 6833, 6826, 6817, 6800, 6788

★ **Overnight Range** - 25.25

### ES (Prev Day)

★ High 7000.50

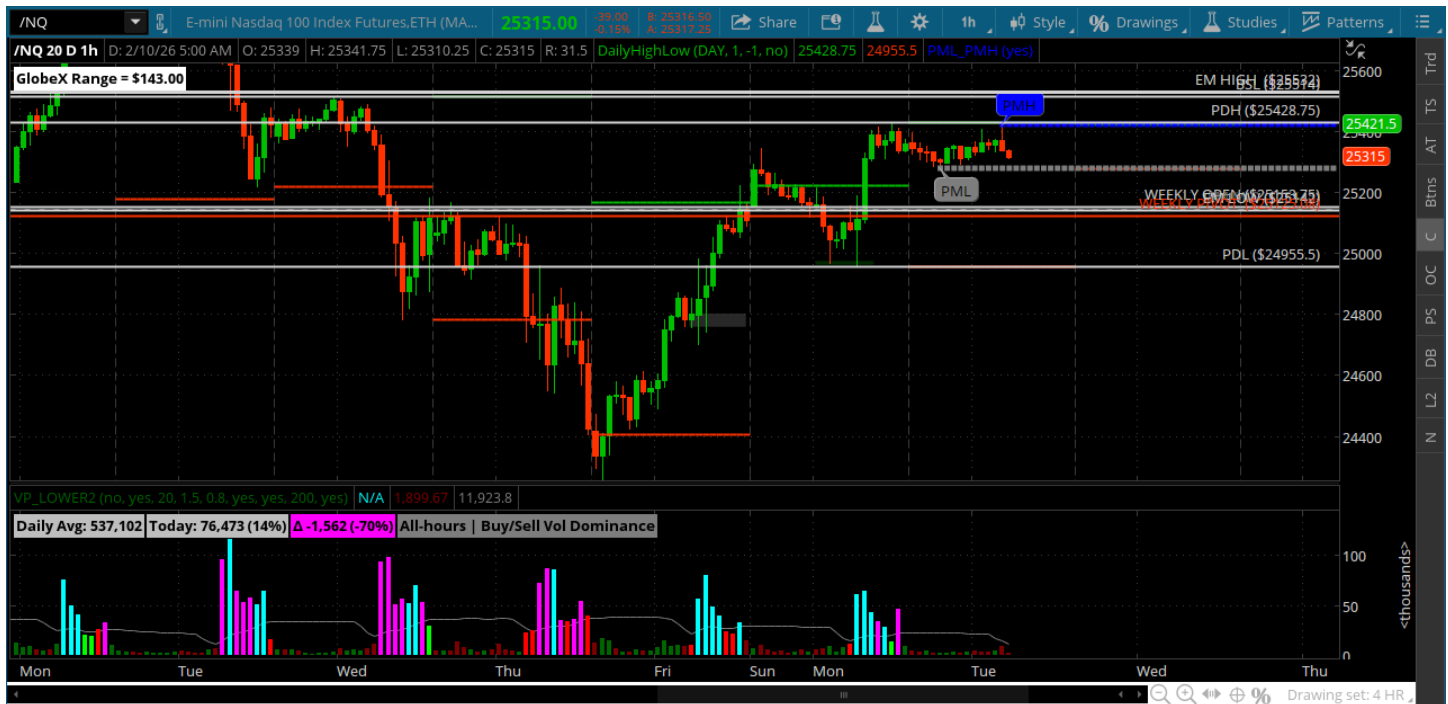
★ Low 6921.00

★ Close 6984.00

**ES (Week Open) 6960.25**

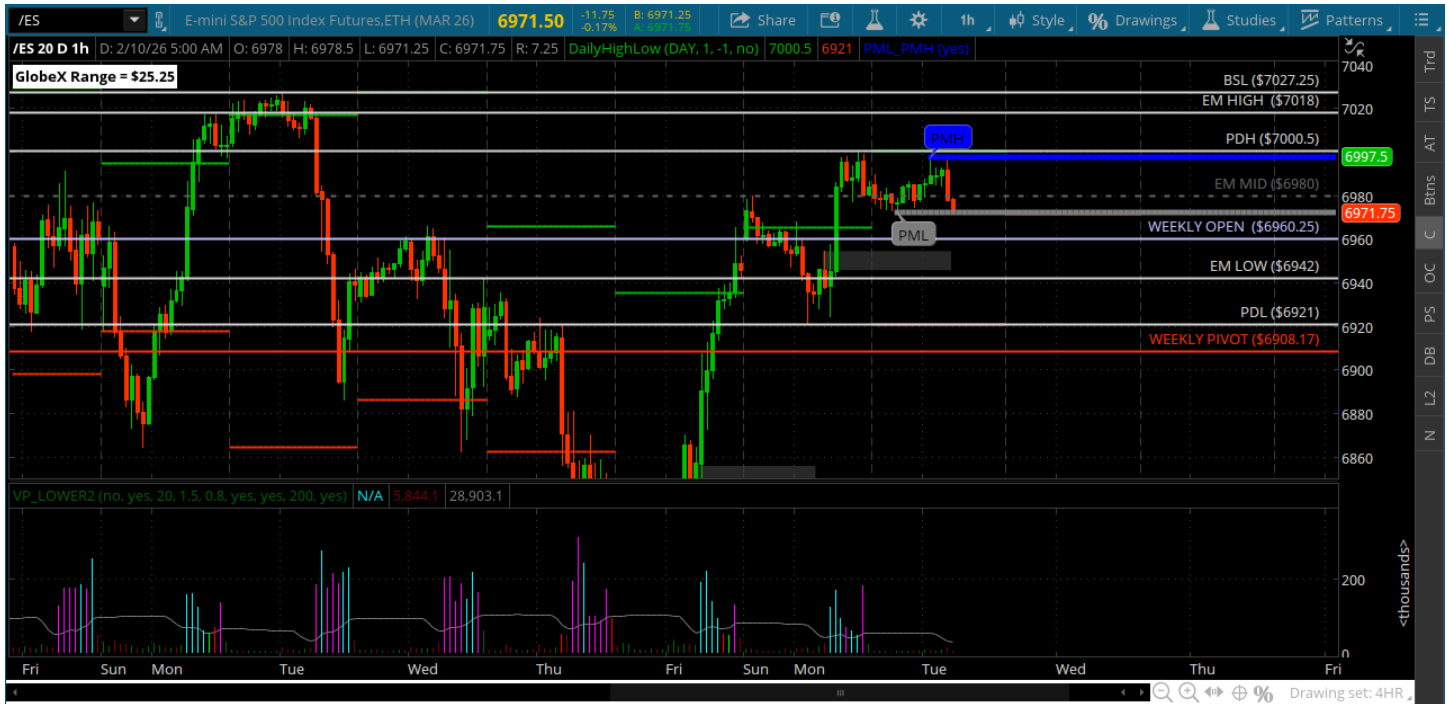
# Pre-Market Charts to Watch

Tuesday, February 10, 2025 Pre-Market /NQ 1 Hour Chart



- Bulls held the line and a close above the weekly pivot
- They need to defend a pullback to the weekly pivot from here
- Bears need under weekly pivot and 25000 to get anything going

## Tuesday, February 10, 2025 Pre-Market /ES 1 Hour Chart



- Bulls close above the weekly pivot and weekly open
- Key is to hold a test of the weekly pivot from here
- They need to recruit aggressive buyers to get over the 7k roundy
- Bears need under the 6933

*Disclaimer:*

Disclaimer: Neither TheoTrade or any of its officers, directors, employees, other personnel, representatives, agents or independent contractors is, in such capacities, a licensed financial adviser, registered investment adviser, registered broker-dealer or FINRA|SIPC|NFA-member firm. TheoTrade does not provide investment or financial advice or make investment recommendations. TheoTrade is not in the business of transacting trades, nor does TheoTrade agree to direct your brokerage accounts or give trading advice tailored to your particular situation. Nothing contained in our content constitutes a solicitation, recommendation, promotion, or endorsement of any particular security, other investment product, transaction or investment. Trading Futures, Options on Futures, and retail off-exchange foreign currency transactions involves substantial risk of loss and is not suitable for all investors. You should carefully consider whether trading is suitable for you in light of your circumstances, knowledge, and financial resources. You may lose all or more of your initial investment. Opinions, market data, and recommendations are subject to change at any time. Past Performance is not necessarily indicative of future results.