



## *Tony Rago's Pre-Market Playbook*

---

### ★ Overnight Range

- ES 25.25
- NQ 129.00
- VIX 17.35

- ★ **Bulls** need to hold above yest closes **6970 and 25257-- long above these**
- ★ Breakouts are above yesterday's highs **7006 and 25447 - aggressive longs** (await for confirmation with a new high and a retest of the highs from above that holds)
- ★ **Bears** need under overnight lows **short under 6953 and 25146**
- ★ Breakdown is below yest lows **6957 and 25198 -- aggressive shorts** (wait for confirmation with a new low and a retest of the lows from below that hold)
- ★ **RANGEBOUND: 2 Way trade long and shorts will work** to get the day done
- ★ Keep it simple and be patient for confirmation on either side or establish the range if we are going to be rangebound
- ★ Confirm rally continuation with sustained trade over the 30min IB High and likewise
- ★ bearish under the IB Low

### ECON:

- 8:30 am U.S. unemployment rate Jan.
- 8:30 am U.S. hourly wages Jan.
- 10:10 am Kansas City Fed President Jeff Schmid speaks
- 2:00 pm Monthly U.S. federal budget

## *Pre-Market Trading Levels for today*

---

### GLOBEX

#### NQ

★ **HIGH:** 25367.75

★ **LOW:** 25146.25

★ **Bull Case** defend the 25106 to seek the 25250, 25312, 25333, 25412, 25500, 25612, 25633, 25750, 25812, 25833

★ **Bear Case** seal the 25612 to seek the 25500, 25412, 25333, 25312, 25250, 25106, 25000, 24912, 24833, 24750, 24633, 24612, 24500, 24412, 24333, 24312, 24250, 24106, 24000

★ **Overnight Range - 221.50**

#### NQ (Prev. Day)

★ High 25447.25

★ Low 25198.25

★ Close 25257.25

**NQ (Week Open) 25153.75**

## S&P 500

★ **HIGH** - 6997.00

★ **LOW** - 6953.00

★ **Bull Case:** defend the 6926 to seek the 6933, 6950, 6962, 6988, 7000, 7012, 7017, 7026, 7033, 7050, 7062

★ **Bear Case:** seal the 7012 to seek the 7000, 6988, 6977, 6950, 6933, 6926, 6917, 6912, 6900, 6888, 6877, 6862, 6850, 6833, 6826, 6817, 6800, 6788

★ **Overnight Range** - 44.00

### ES (Prev Day)

★ High 7006.50

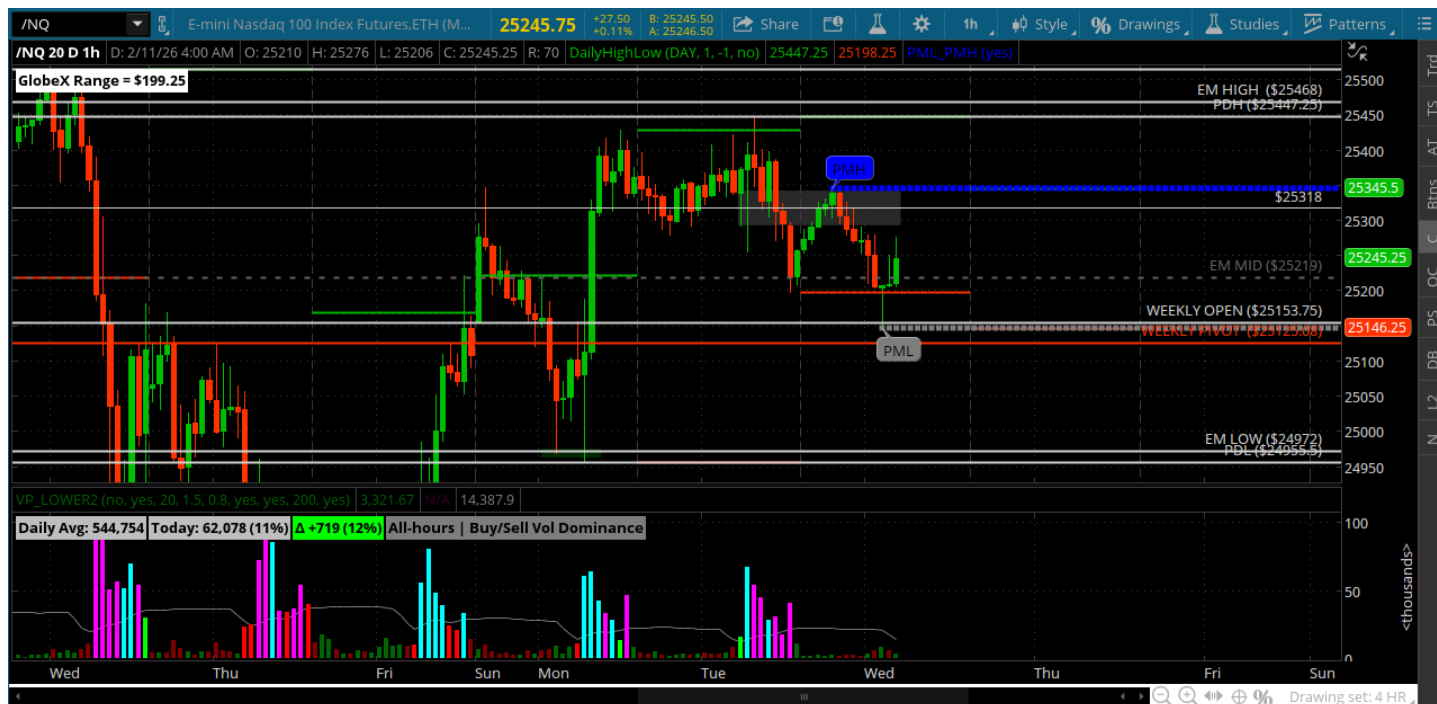
★ Low 6957.00

★ Close 6970.50

**ES (Week Open) 6960.25**

# Pre-Market Charts to Watch

Wednesday, February 11, 2025 Pre-Market /NQ 1 Hour Chart



- Range bound day with some pretty bad price action
- Bollinger bands are very tight so expansion is coming
- Bulls need to get and stay above the 25612
- Bears need to knock it down under the 25106

### Wednesday, February 11, 2025 Pre-Market /ES 1 Hour Chart



- Tight range yesterday with a marginal high above 7k and fade right back to the 6970 into the close
- 7000 remains resistance until price can get comfortable above it
- Bulls need to hold the 6977 and 6962 and reach back for 7k
- Bears need under the 6942

*Disclaimer:*

Disclaimer: Neither TheoTrade or any of its officers, directors, employees, other personnel, representatives, agents or independent contractors is, in such capacities, a licensed financial adviser, registered investment adviser, registered broker-dealer or FINRA|SIPC|NFA-member firm. TheoTrade does not provide investment or financial advice or make investment recommendations. TheoTrade is not in the business of transacting trades, nor does TheoTrade agree to direct your brokerage accounts or give trading advice tailored to your particular situation. Nothing contained in our content constitutes a solicitation, recommendation, promotion, or endorsement of any particular security, other investment product, transaction or investment. Trading Futures, Options on Futures, and retail off-exchange foreign currency transactions involves substantial risk of loss and is not suitable for all investors. You should carefully consider whether trading is suitable for you in light of your circumstances, knowledge, and financial resources. You may lose all or more of your initial investment. Opinions, market data, and recommendations are subject to change at any time. Past Performance is not necessarily indicative of future results.