



Tony Rago's Pre-Market Playbook

★ Overnight Range

- ES 39.25
- NQ 213.75
- VIX 17.22

★ **Bulls** need to hold above yest closes **6963** and **25278**-- long above these

★ Breakouts are above yesterday's highs **7011** and **25465** - **aggressive longs** (await for confirmation with a new high and a retest of the highs from above that holds

★ **Bears** need under overnight lows **short under 6952** and **25206**

★ Breakdown is below yest lows **6931** and **25058** -- **aggressive shorts** (wait for

★ confirmation with a new low and a retest of the lows from below that hold)

★ **RANGEBOUND: 2 Way trade long and shorts will work** to get the day done

★ Keep it simple and be patient for confirmation on either side or establish the range if

★ we are going to be rangebound

★ Confirm rally continuation with sustained trade over the 30min IB High and likewise

★ bearish under the IB Low

ECON:

- 8:30 am Initial jobless claims
- 10:00 am Existing home sales

Pre-Market Trading Levels for today

GLOBEX

NQ

★ **HIGH:** 25419.75

★ **LOW:** 25206.00

★ **Bull Case** defend the 25106 to seek the 25250, 25312, 25333, 25412, 25500, 25612, 25633, 25750, 25812, 25833

★ **Bear Case** seal the 25612 to seek the 25500, 25412, 25333, 25312, 25250, 25106, 25000, 24912, 24833, 24750, 24633, 24612, 24500, 24412, 24333, 24312, 24250, 24106, 24000

★ **Overnight Range - 213.75**

NQ (Prev. Day)

★ High 25465.25

★ Low 25058.25

★ Close 25278.75

NQ (Week Open) 25153.75

S&P 500

★ **HIGH** - 6991.50

★ **LOW** - 6952.25

★ **Bull Case:** defend the 6926 to seek the 6933, 6950, 6962, 6988, 7000, 7012, 7017, 7026, 7033, 7050, 7062

★ **Bear Case:** seal the 7012 to seek the 7000, 6988, 6977, 6950, 6933, 6926, 6917, 6912, 6900, 6888, 6877, 6862, 6850, 6833, 6826, 6817, 6800, 6788

★ **Overnight Range** - 39.25

ES (Prev Day)

★ High 7011.50

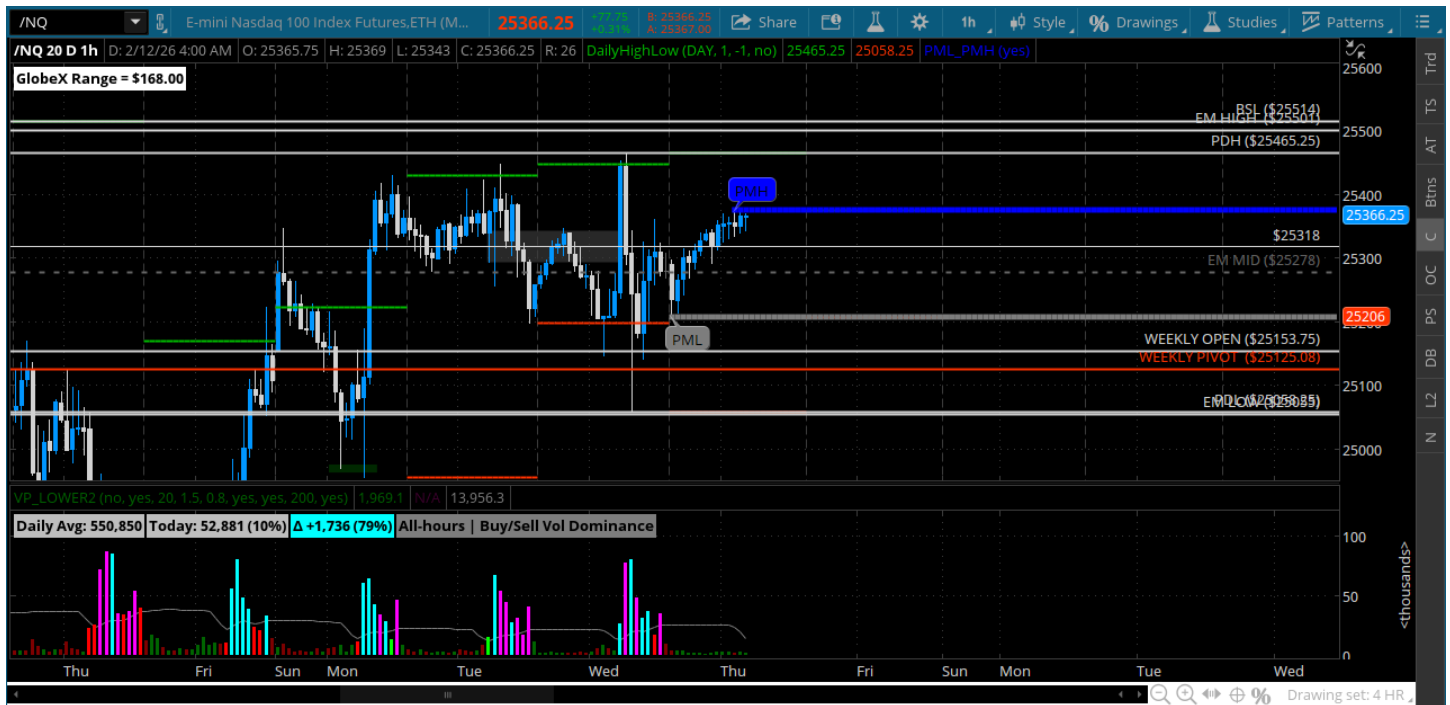
★ Low 6931.00

★ Close 6963.00

ES (Week Open) 6960.25

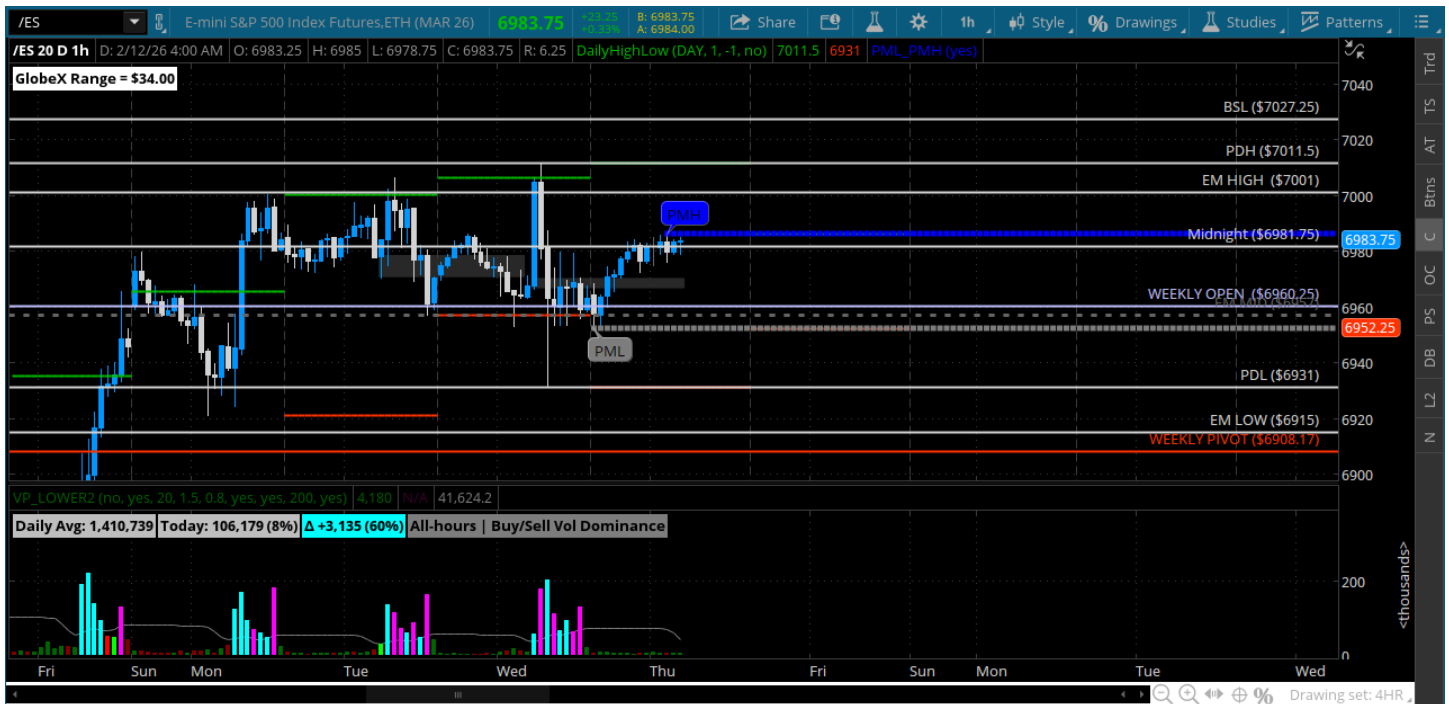
Pre-Market Charts to Watch

Thursday, February 12, 2025 Pre-Market /NQ 1 Hour Chart



- Big waves and we close right back in this sideways zone
- These tapes are just massive consolidation ranges at the moment
- Trade the range until it breaks
- Will be watching the 25412 and 25500 for resistance this morning
- Bulls need to defend the 25250 and 25106

Thursday, February 12, 2025 Pre-Market /ES 1 Hour Chart



- Big dip and a big rip and back to the middle
- Bulls need to hold a test of the weekly open this morning and make a move back to the 7k
- Bears want to hold it in again and move back to the 6950 and 6942
- Big ranges - trade them like you see them

Disclaimer:

Disclaimer: Neither TheoTrade or any of its officers, directors, employees, other personnel, representatives, agents or independent contractors is, in such capacities, a licensed financial adviser, registered investment adviser, registered broker-dealer or FINRA|SIPC|NFA-member firm. TheoTrade does not provide investment or financial advice or make investment recommendations. TheoTrade is not in the business of transacting trades, nor does TheoTrade agree to direct your brokerage accounts or give trading advice tailored to your particular situation. Nothing contained in our content constitutes a solicitation, recommendation, promotion, or endorsement of any particular security, other investment product, transaction or investment. Trading Futures, Options on Futures, and retail off-exchange foreign currency transactions involves substantial risk of loss and is not suitable for all investors. You should carefully consider whether trading is suitable for you in light of your circumstances, knowledge, and financial resources. You may lose all or more of your initial investment. Opinions, market data, and recommendations are subject to change at any time. Past Performance is not necessarily indicative of future results.