



Tony Rago's Pre-Market Playbook

★ Overnight Range

- ES 48.75
- NQ 244.25
- VIX 21.20

- ★ **Bulls** need to hold above yest closes **6862 and 24822-- long above these**
- ★ Breakouts are above yesterday's highs **6993 and 25420 - aggressive longs** (await for confirmation with a new high and a retest of the highs from above that holds)
- ★ **Bears** need under overnight lows **short under 6820 and 24624**
- ★ Breakdown is below yest lows **6842 and 24721 -- aggressive shorts** (wait for confirmation with a new low and a retest of the lows from below that hold)
- ★ **RANGEBOUND: 2 Way trade long and shorts will work** to get the day done
- ★ Keep it simple and be patient for confirmation on either side or establish the range if we are going to be rangebound
- ★ Confirm rally continuation with sustained trade over the 30min IB High and likewise
- ★ bearish under the IB Low

ECON:

- 8:30 am Initial jobless claims
- 10:00 am Existing home sales

Pre-Market Trading Levels for today

GLOBEX

NQ

★ **HIGH:** 24864.75

★ **LOW:** 24624.00

★ **Bull Case** defend the 24500 to seek the 24612, 24633, 24750, 24812, 24833, 24912, 25000, 25106, 25250, 25312, 25333, 25412, 25500

★ **Bear Case** seal the 25000 to seek the 24912, 24833, 24750, 24633, 24612, 24500, 24412, 24333, 24312, 24250, 24106, 24000

★ **Overnight Range - 244.25**

NQ (Prev. Day)

★ High 25419.75

★ Low 24721.50

★ Close 24822.00

NQ (Week Open) 25153.75

S&P 500

★ **HIGH** - 6868.75

★ **LOW** - 6820.00

★ **Bull Case:** defend the 6800 to seek the 6812, 6817, 6826, 6833, 6850, 6862, 6888, 6900, 6912, 6917, 6926, 6933, 6950, 6962

★ **Bear Case:** seal the 6912 to seek the 6900, 6888, 6877, 6862, 6850, 6833, 6826, 6817, 6800, 6788, 6762, 6750

★ **Overnight Range** - 48.75

ES (Prev Day)

★ High 6992.75

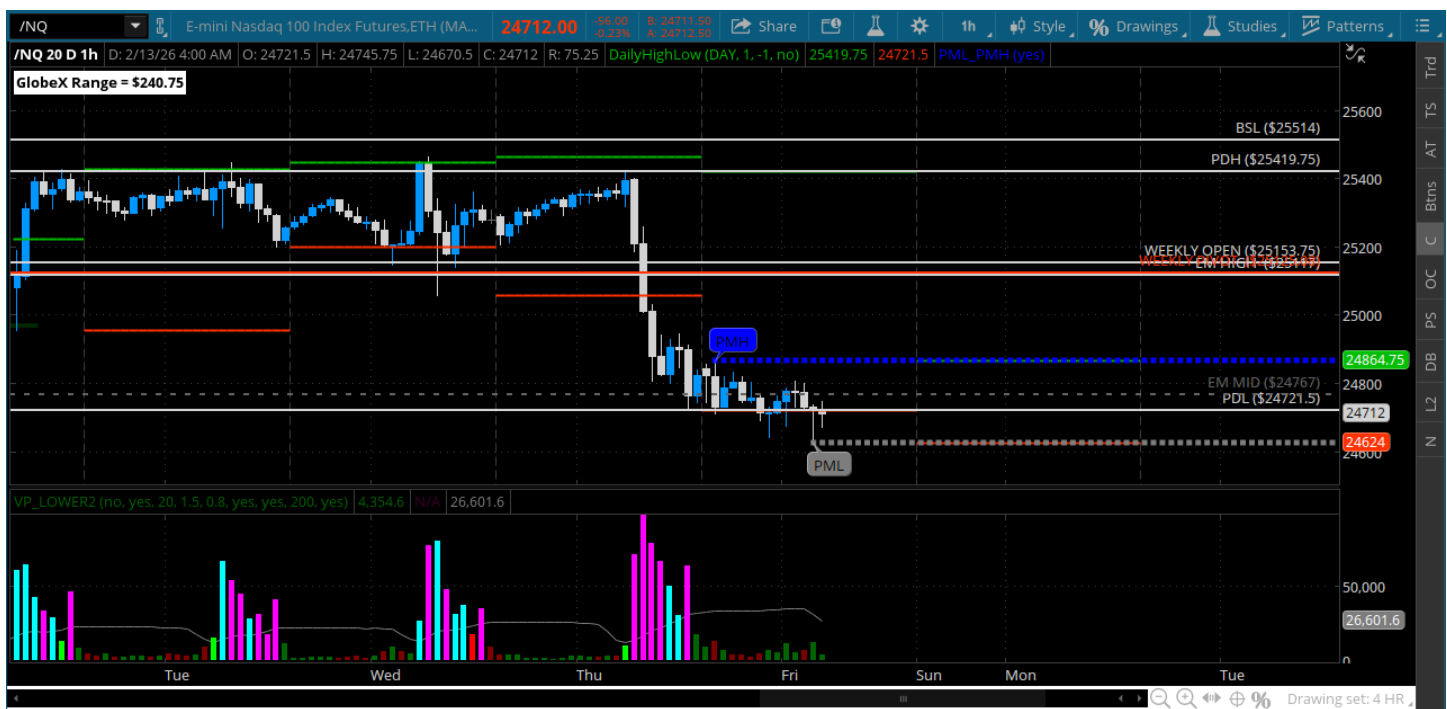
★ Low 6842.00

★ Close 6861.75

ES (Week Open) 6960.25

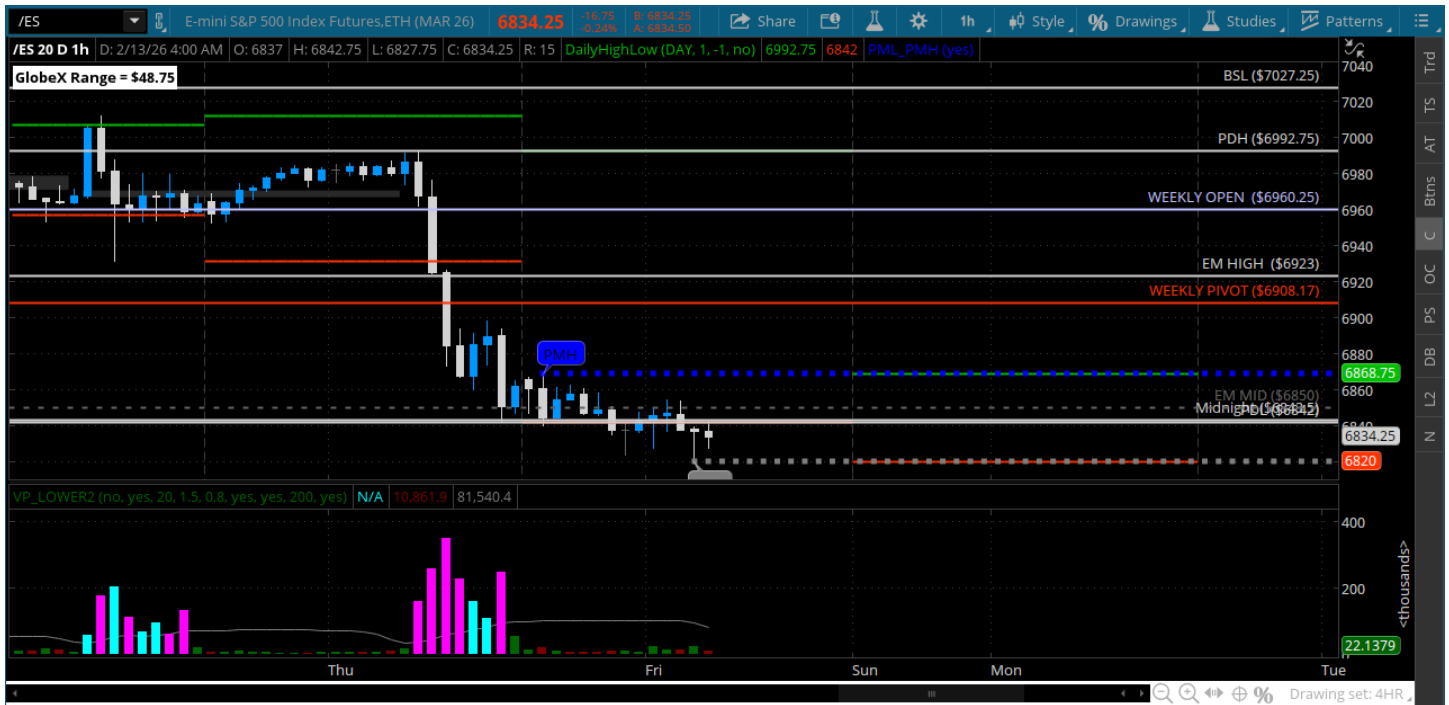
Pre-Market Charts to Watch

Friday, February 13, 2025 Pre-Market /NQ 1 Hour Chart



- Liquidation all the way down to the 24726 and no bounce so far
- VIX over 21 sets up a very volatile Friday
- Will look to sell pops until price can hold above 25000
- Be careful trading intraday today

Friday, February 13, 2025 Pre-Market /ES 1 Hour Chart



- Liquidation down to the 6842 yesterday - bulls had no traction whatsoever
- Price still at yesterdays lows here overnight - no bounce
- Going to have to take it as we see it today – could be a very volatile day

Disclaimer:

Disclaimer: Neither TheoTrade or any of its officers, directors, employees, other personnel, representatives, agents or independent contractors is, in such capacities, a licensed financial adviser, registered investment adviser, registered broker-dealer or FINRA|SIPC|NFA-member firm. TheoTrade does not provide investment or financial advice or make investment recommendations. TheoTrade is not in the business of transacting trades, nor does TheoTrade agree to direct your brokerage accounts or give trading advice tailored to your particular situation. Nothing contained in our content constitutes a solicitation, recommendation, promotion, or endorsement of any particular security, other investment product, transaction or investment. Trading Futures, Options on Futures, and retail off-exchange foreign currency transactions involves substantial risk of loss and is not suitable for all investors. You should carefully consider whether trading is suitable for you in light of your circumstances, knowledge, and financial resources. You may lose all or more of your initial investment. Opinions, market data, and recommendations are subject to change at any time. Past Performance is not necessarily indicative of future results.