



Tony Rago's Pre-Market Playbook

★ Overnight Range

- ES 64.00
- NQ 324.50
- VIX 22.28

- ★ **Bulls** need to hold above yest closes **6845 and 24773-- long above these**
- ★ Breakouts are above yesterday's highs **6897 and 24995 - aggressive longs** (await for confirmation with a new high and a retest of the highs from above that holds)
- ★ **Bears** need under overnight lows **short under 6810 and 24558**
- ★ Breakdown is below yest lows **6808 and 24578 -- aggressive shorts** (wait for confirmation with a new low and a retest of the lows from below that hold)
- ★ **RANGEBOUND: 2 Way trade long and shorts will work** to get the day done
- ★ Keep it simple and be patient for confirmation on either side or establish the range if we are going to be rangebound
- ★ Confirm rally continuation with sustained trade over the 30min IB High and likewise
- ★ bearish under the IB Low

ECON:

- 8:30 am Empire State manufacturing survey
- 10:00 am Home builder confidence index

Pre-Market Trading Levels for today

GLOBEX

NQ

★ **HIGH:** 24842.50

★ **LOW:** 24518.00

★ **Bull Case** defend the 24500 to seek the 24612, 24633, 24750, 24812, 24833, 24912, 25000, 25106, 25250, 25312, 25333, 25412, 25500

★ **Bear Case** seal the 25000 to seek the 24912, 24833, 24750, 24633, 24612, 24500, 24412, 24333, 24312, 24250, 24106, 24000

★ **Overnight Range - 284.25**

NQ (Prev. Day)

★ High 25419.75

★ Low 24721.50

★ Close 24822.00

NQ (Week Open) 24789.75

S&P 500

★ **HIGH** - 6868.75

★ **LOW** - 6805.75

★ **Bull Case:** defend the 6800 to seek the 6812, 6817, 6826, 6833, 6850, 6862, 6888, 6900, 6912, 6917, 6926, 6933, 6950, 6962

★ **Bear Case:** seal the 6912 to seek the 6900, 6888, 6877, 6862, 6850, 6833, 6826, 6817, 6800, 6788, 6762, 6750

★ **Overnight Range** - 48.75

ES (Prev Day)

★ High 6992.75

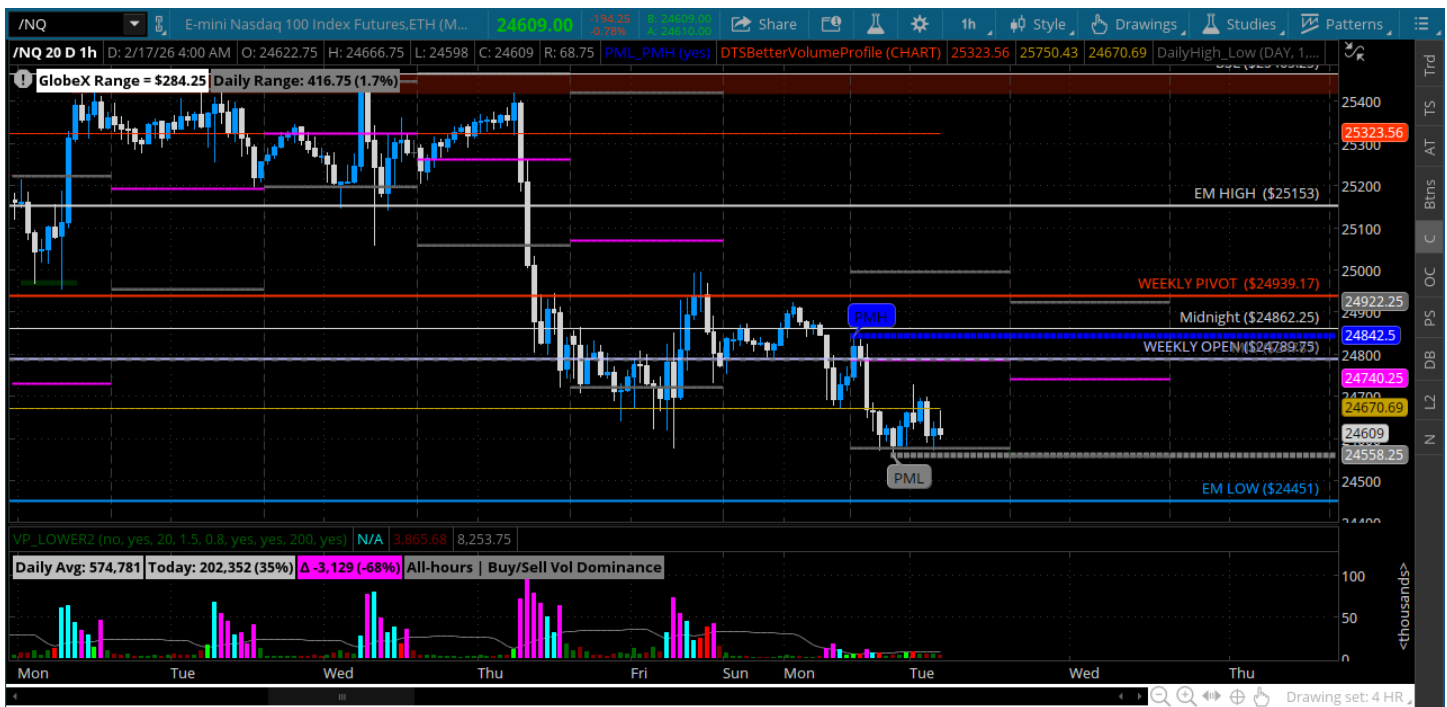
★ Low 6842.00

★ Close 6861.75

ES (Week Open) 6852.50

Pre-Market Charts to Watch

Tuesday, February 17, 2025 Pre-Market /NQ 1 Hour Chart



- Still under the 25k and lower highs on the higher time frames
- Bears still selling rallies
- Bulls need above weekly pivot on a daily close to shift control
- Bears want to stay under weekly open and target last weeks lows 24250 and below

Tuesday, February 17, 2025 Pre-Market /ES 1 Hour Chart



- Bears still in control selling rallies
- Bulls need a rally that sticks and closes above the weekly pivot on the daily
- Will be watching Fridays lows for clues at the open here
- Bears need to keep price under the weekly open and move to the 6800 and below

Disclaimer:

Disclaimer: Neither TheoTrade or any of its officers, directors, employees, other personnel, representatives, agents or independent contractors is, in such capacities, a licensed financial adviser, registered investment adviser, registered broker-dealer or FINRA|SIPC|NFA-member firm. TheoTrade does not provide investment or financial advice or make investment recommendations. TheoTrade is not in the business of transacting trades, nor does TheoTrade agree to direct your brokerage accounts or give trading advice tailored to your particular situation. Nothing contained in our content constitutes a solicitation, recommendation, promotion, or endorsement of any particular security, other investment product, transaction or investment. Trading Futures, Options on Futures, and retail off-exchange foreign currency transactions involves substantial risk of loss and is not suitable for all investors. You should carefully consider whether trading is suitable for you in light of your circumstances, knowledge, and financial resources. You may lose all or more of your initial investment. Opinions, market data, and recommendations are subject to change at any time. Past Performance is not necessarily indicative of future results.