



## *Tony Rago's Pre-Market Playbook*

---

### ★ Overnight Range

- ES 55.25
- NQ 261.75
- VIX 20.24

- ★ **Bulls** need to hold above yest closes **6862 and 24768-- long above these**
- ★ Breakouts are above yesterday's highs **6885 and 24922 - aggressive longs** (await for confirmation with a new high and a retest of the highs from above that holds)
- ★ **Bears** need under overnight lows **short under 6848 and 24700**
- ★ Breakdown is below yest lows **6791 and 24449 -- aggressive shorts** (wait for confirmation with a new low and a retest of the lows from below that hold)
- ★ **RANGEBOUND: 2 Way trade long and shorts will work** to get the day done
- ★ Keep it simple and be patient for confirmation on either side or establish the range if we are going to be rangebound
- ★ Confirm rally continuation with sustained trade over the 30min IB High and likewise
- ★ bearish under the IB Low

### ECON:

- 8:30 am Housing starts (delayed report)
- 8:30 am Durable-goods orders (delayed report)
- 8:30 am Durable-goods minus transportation
- 9:15 am Industrial production
- 1:00 pm Fed Vice Chair for Supervision Michelle Bowman speak
- 2:00 pm Minutes of Fed's January FOMC meeting

## *Pre-Market Trading Levels for today*

---

### GLOBEX

#### NQ

★ **HIGH:** 24962.50

★ **LOW:** 24700.75

★ **Bull Case** defend the 24612 to seek the 24633, 24750, 24812, 24833, 24912, 25000, 25106, 25250, 25312, 25333, 25412, 25500

★ **Bear Case** seal the 25106 to seek the 25000, 24912, 24833, 24750, 24633, 24612, 24500, 24412, 24333, 24312, 24250, 24106, 24000

★ **Overnight Range - 261.75**

#### NQ (Prev. Day)

★ High 24922.25

★ Low 24449.25

★ Close 24768.25

**NQ (Week Open) 24789.75**

## S&P 500

★ **HIGH** - 6904.00

★ **LOW** - 6848.75

★ **Bull Case:** defend the 6833 to seek the 6850, 6862, 6888, 6900, 6912, 6917, 6926, 6933, 6950, 6962

★ **Bear Case:** seal the 6912 to seek the 6900, 6888, 6877, 6862, 6850, 6833, 6826, 6817, 6800, 6788, 6762, 6750

★ **Overnight Range** - 55.25

### ES (Prev Day)

★ High 6885.00

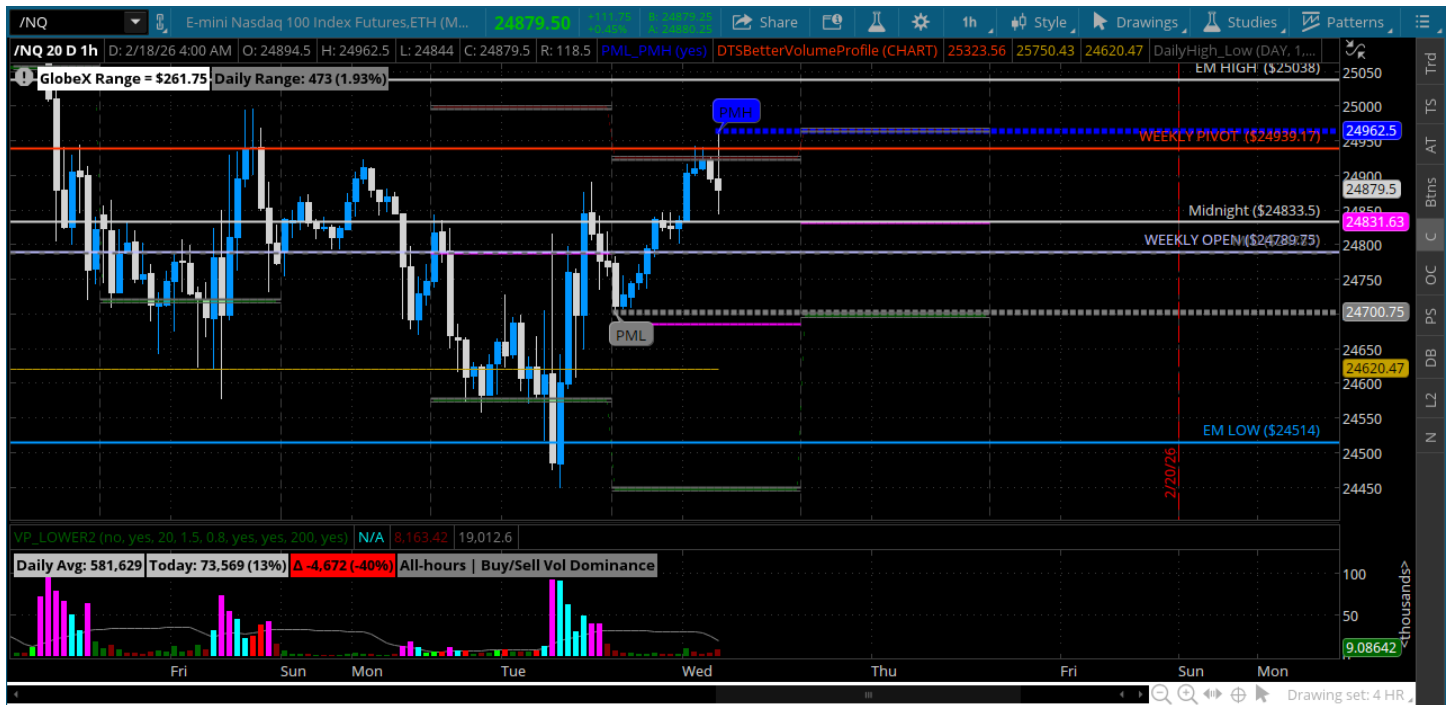
★ Low 6791.00

★ Close 6862.25

**ES (Week Open) 6852.50**

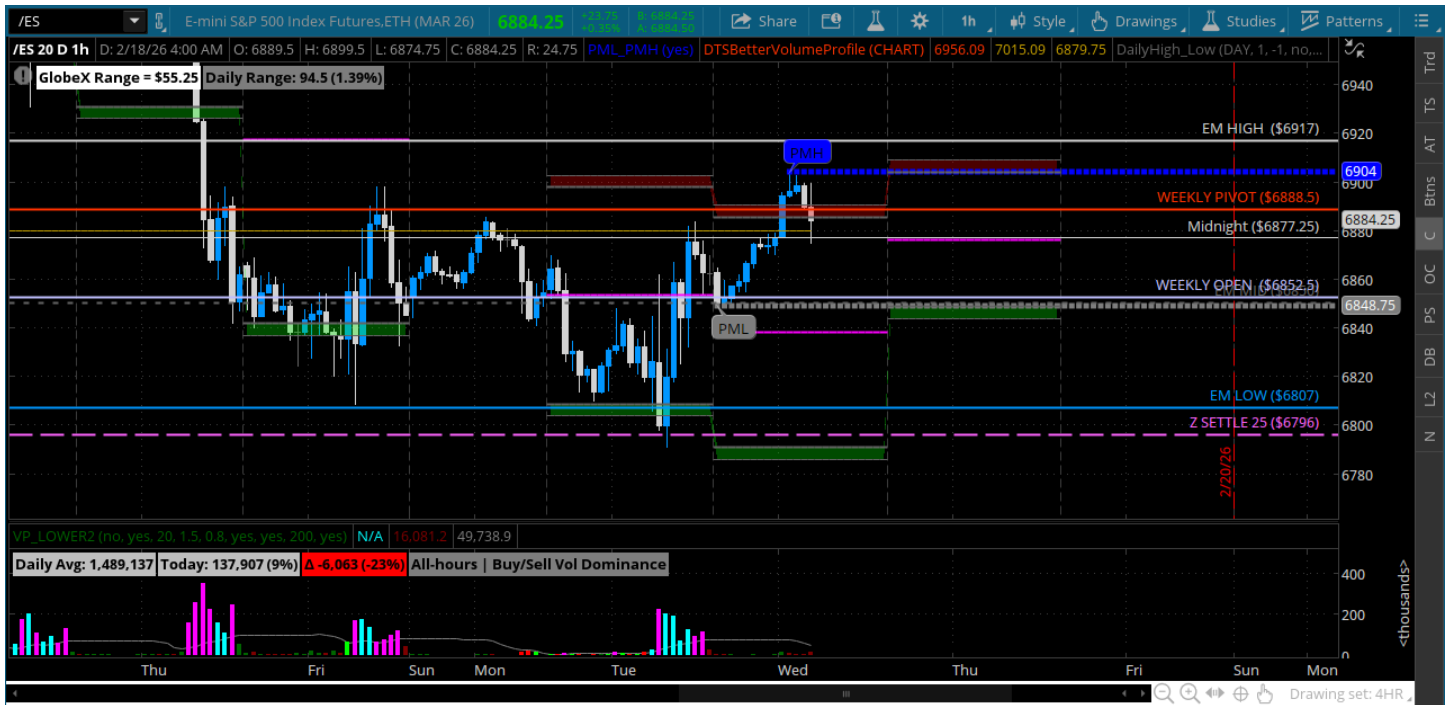
# Pre-Market Charts to Watch

Wednesday, February 18, 2025 Pre-Market /NQ 1 Hour Chart



- Weekly pivot test overnight and rejects a bit
- Bulls finding some footing and can have a day if they can stay above the 24789 weekly open
- Bears want to push back and get under the weekly open and the 24750

### Wednesday, February 18, 2025 Pre-Market /ES 1 Hour Chart



- Bears still in control selling rallies
- Bulls need a rally that sticks and closes above the weekly pivot on the daily
- Will be watching Fridays lows for clues at the open here
- Bears need to keep price under the weekly open and move to the 6800 and below

*Disclaimer:*

Disclaimer: Neither TheoTrade or any of its officers, directors, employees, other personnel, representatives, agents or independent contractors is, in such capacities, a licensed financial adviser, registered investment adviser, registered broker-dealer or FINRA|SIPC|NFA-member firm. TheoTrade does not provide investment or financial advice or make investment recommendations. TheoTrade is not in the business of transacting trades, nor does TheoTrade agree to direct your brokerage accounts or give trading advice tailored to your particular situation. Nothing contained in our content constitutes a solicitation, recommendation, promotion, or endorsement of any particular security, other investment product, transaction or investment. Trading Futures, Options on Futures, and retail off-exchange foreign currency transactions involves substantial risk of loss and is not suitable for all investors. You should carefully consider whether trading is suitable for you in light of your circumstances, knowledge, and financial resources. You may lose all or more of your initial investment. Opinions, market data, and recommendations are subject to change at any time. Past Performance is not necessarily indicative of future results.