



Tony Rago's Pre-Market Playbook

★ Overnight Range

- ES 48.50
- NQ 226.75
- VIX 20.90

- ★ **Bulls** need to hold above yest closes **6872 and 24836-- long above these**
- ★ Breakouts are above yesterday's highs **6912 and 2554 - aggressive longs** (await for confirmation with a new high and a retest of the highs from above that holds)
- ★ **Bears** need under overnight lows **short under 6862 and 24791**
- ★ Breakdown is below yest lows **6847 and 24749 -- aggressive shorts** (wait for confirmation with a new low and a retest of the lows from below that hold)
- ★ **RANGEBOUND: 2 Way trade long and shorts will work** to get the day done
- ★ Keep it simple and be patient for confirmation on either side or establish the range if we are going to be rangebound
- ★ Confirm rally continuation with sustained trade over the 30min IB High and likewise
- ★ bearish under the IB Low

ECON:

- 8:30 am GDP Q4
- 8:30 am Core PCE
- 9:45 am S&P flash U.S. services PMI
- 9:45 am Atlanta Fed President Raphael Bostic speaks
- 10:00 am New home sales (delayed report)
- 10:00 am Consumer sentiment (prelim)

Pre-Market Trading Levels for today

GLOBEX

NQ

★ **HIGH:** 24984.75

★ **LOW:** 24758.00

★ **Bull Case** defend the 24633 to seek the 24750, 24812, 24833, 24912, 25000, 25106, 25250, 25312, 25333, 25412, 25500

★ **Bear Case** seal the 25250 to seek the 25106, 25000, 24912, 24833, 24750, 24633, 24612, 24500, 24412, 24333, 24312, 24250, 24106, 24000

★ **Overnight Range - 226.75**

NQ (Prev. Day)

★ High 25054.00

★ Low 24749.00

★ Close 24836.00

NQ (Week Open) 24789.75

S&P 500

★ **HIGH** - 6904.75

★ **LOW** - 6856.25

★ **Bull Case:** defend the 6850 to seek the 6862, 6888, 6900, 6912, 6917, 6926, 6933, 6950, 6962

★ **Bear Case:** seal the 6933 to seek the 6926, 6917, 6912, 6900, 6888, 6877, 6862, 6850, 6833, 6826, 6817, 6800, 6788, 6762, 6750

★ **Overnight Range** - 48.50

ES (Prev Day)

★ High 6912.50

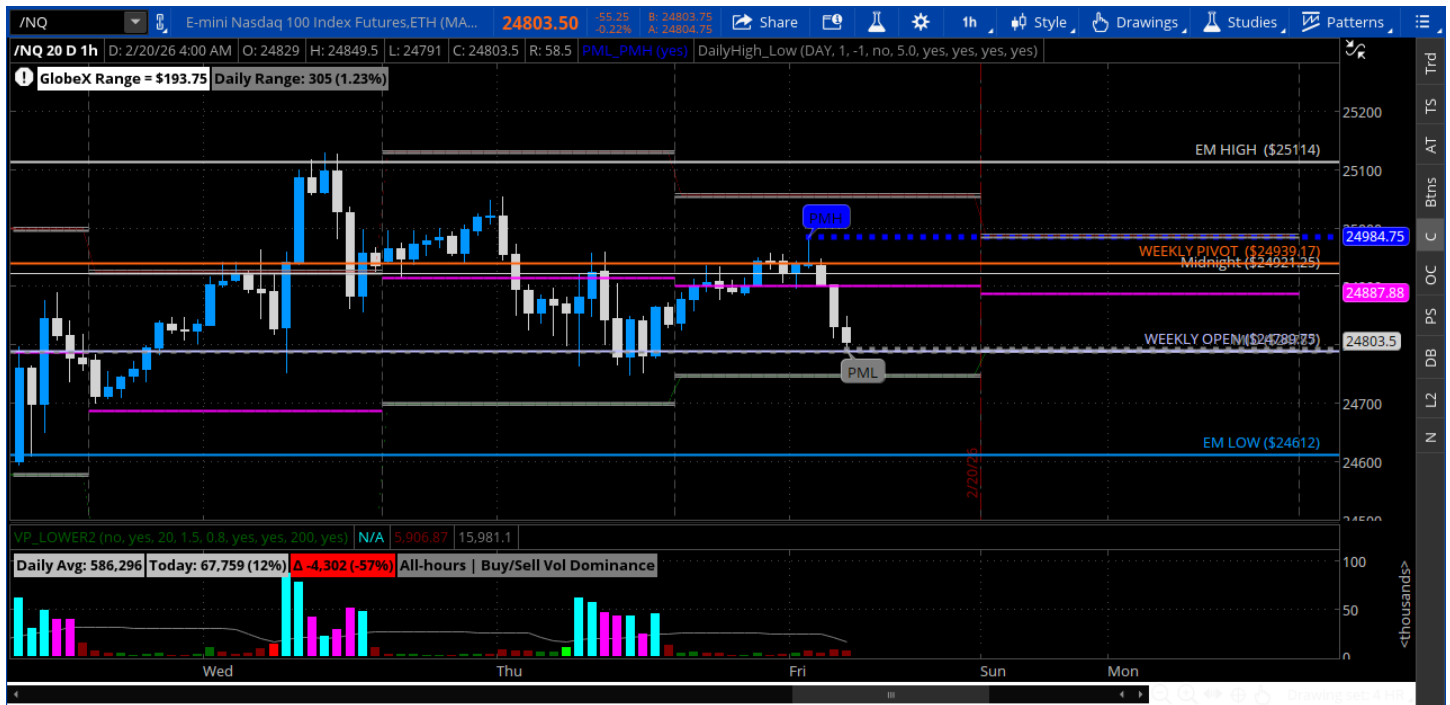
★ Low 6847.75

★ Close 6872.25

ES (Week Open) 6852.50

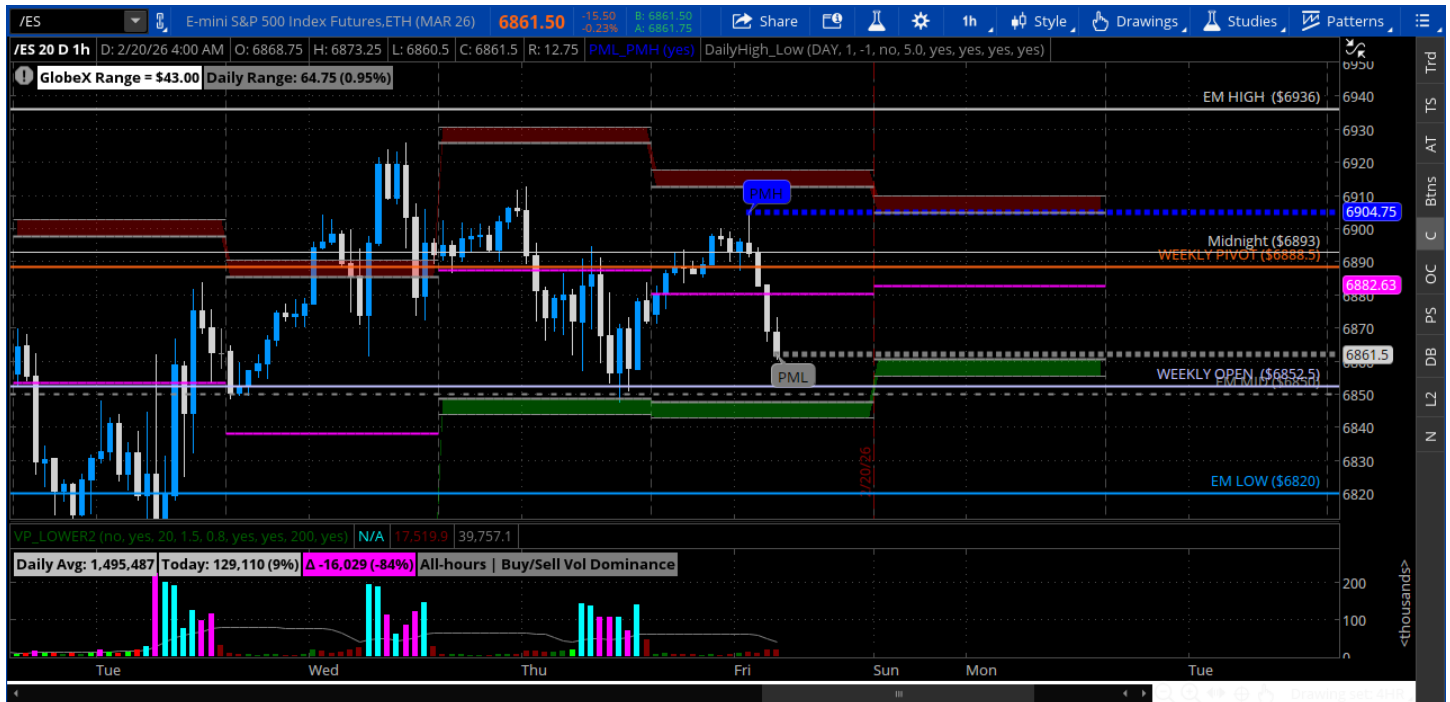
Pre-Market Charts to Watch

Friday, February 20, 2025 Pre-Market /NQ 1 Hour Chart



- Wide range day yesterday with either side making any significant moves
- Price is hugging the weekly open level - meaning we have not gone anywhere this week
- Big ranges and waves - great trading environment but no real changes on the week
- Today is Friday so lets see who wants to lead

Friday, February 20, 2025 Pre-Market /ES 1 Hour Chart



- Sideways week = bulls could not hold 6900 and bears could not convert the 6800
- These ranges are very large and great for intraday trading
- Looking for more of the same today

Disclaimer:

Disclaimer: Neither TheoTrade or any of its officers, directors, employees, other personnel, representatives, agents or independent contractors is, in such capacities, a licensed financial adviser, registered investment adviser, registered broker-dealer or FINRA|SIPC|NFA-member firm. TheoTrade does not provide investment or financial advice or make investment recommendations. TheoTrade is not in the business of transacting trades, nor does TheoTrade agree to direct your brokerage accounts or give trading advice tailored to your particular situation. Nothing contained in our content constitutes a solicitation, recommendation, promotion, or endorsement of any particular security, other investment product, transaction or investment. Trading Futures, Options on Futures, and retail off-exchange foreign currency transactions involves substantial risk of loss and is not suitable for all investors. You should carefully consider whether trading is suitable for you in light of your circumstances, knowledge, and financial resources. You may lose all or more of your initial investment. Opinions, market data, and recommendations are subject to change at any time. Past Performance is not necessarily indicative of future results.