



## *Tony Rago's Pre-Market Playbook*

---

- ★ ES WEEKLY PIVOT 6882.42
- ★ NQ WEEKLY PIVOT 24888.75
- ★ Overnight Range
  - ES 55.50
  - NQ 252.50
  - VIX 20.36
- ★ **Bulls** need to hold above yest closes **6924 and 25077-- long above these**
- ★ Breakouts are above yesterday's highs **6931 and 25139 - aggressive longs** (await for confirmation with a new high and a retest of the highs from above that holds)
- ★ **Bears** need under overnight lows **short under 6867 and 24807**
- ★ Breakdown is below yest lows **6847 and 24678**
- ★ -- **aggressive shorts** (wait for
- ★ confirmation with a new low and a retest of the lows from below that hold)
- ★ **RANGEBOUND: 2 Way trade long and shorts will work** to get the day done
- ★ Keep it simple and be patient for confirmation on either side or establish the range if
- ★ we are going to be rangebound
- ★ Confirm rally continuation with sustained trade over the 30min IB High and likewise
- ★ bearish under the IB Low

### **ECON:**

- 10:00 am Factory orders

## *Pre-Market Trading Levels for today*

---

### GLOBEX

#### NQ

★ **HIGH:** 25059.75

★ **LOW:** 24807.25

★ **Bull Case** defend the 24633 to seek the 24750, 24812, 24833, 24912, 25000, 25106, 25250, 25312, 25333, 25412, 25500

★ **Bear Case** seal the 25250 to seek the 25106, 25000, 24912, 24833, 24750, 24633, 24612, 24500, 24412, 24333, 24312, 24250, 24106, 24000

★ **Overnight Range - 252.50**

#### NQ (Prev. Day)

★ High 25139.50

★ Low 24678.50

★ Close 25077.50

**NQ (Week Open) 25033.75**

## S&P 500

★ **HIGH** - 6923.00

★ **LOW** - 6867.50

★ **Bull Case:** defend the 6850 to seek the 6862, 6888, 6900, 6912, 6917, 6926, 6933, 6950, 6962

★ **Bear Case:** seal the 6933 to seek the 6926, 6917, 6912, 6900, 6888, 6877, 6862, 6850, 6833, 6826, 6817, 6800, 6788, 6762, 6750

★ **Overnight Range** - 55.50

### ES (Prev Day)

★ High 6931.50

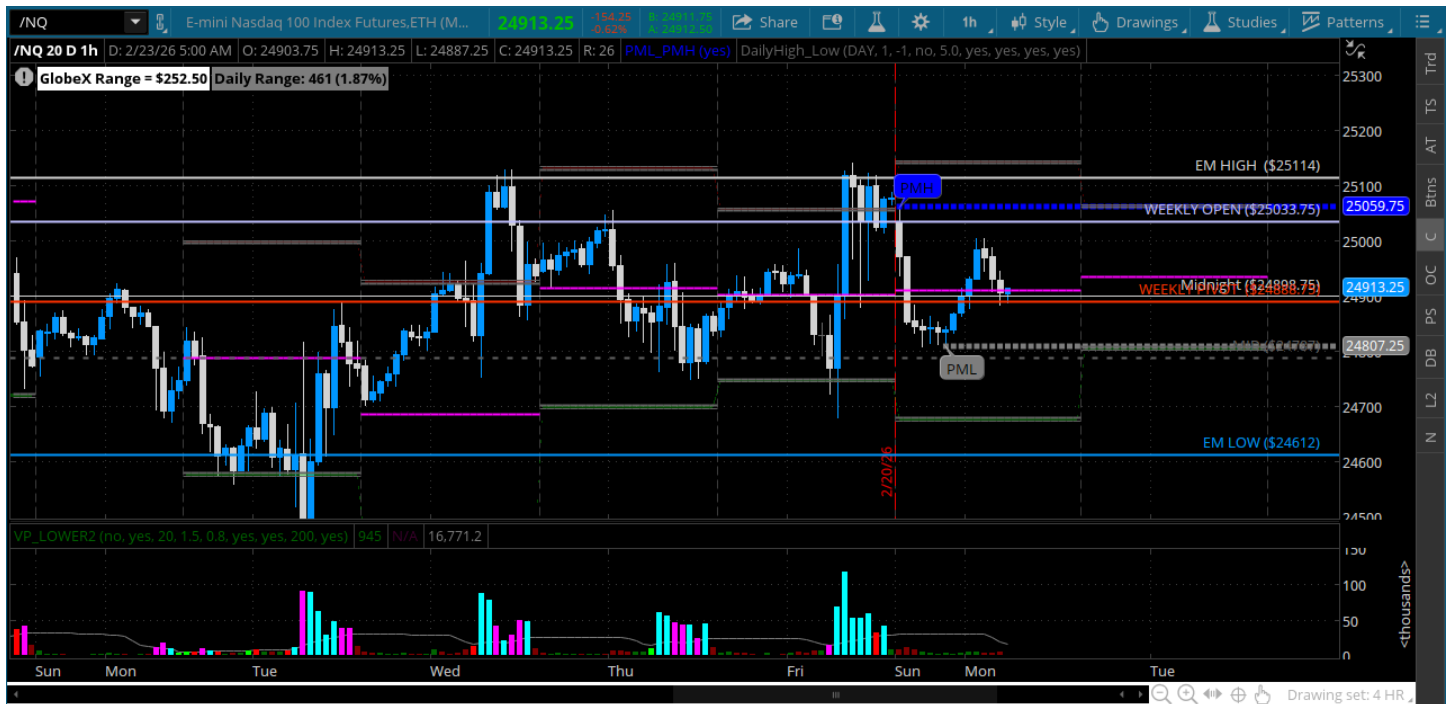
★ Low 6847.25

★ Close 6924.75

**ES (Week Open) 6852.50**

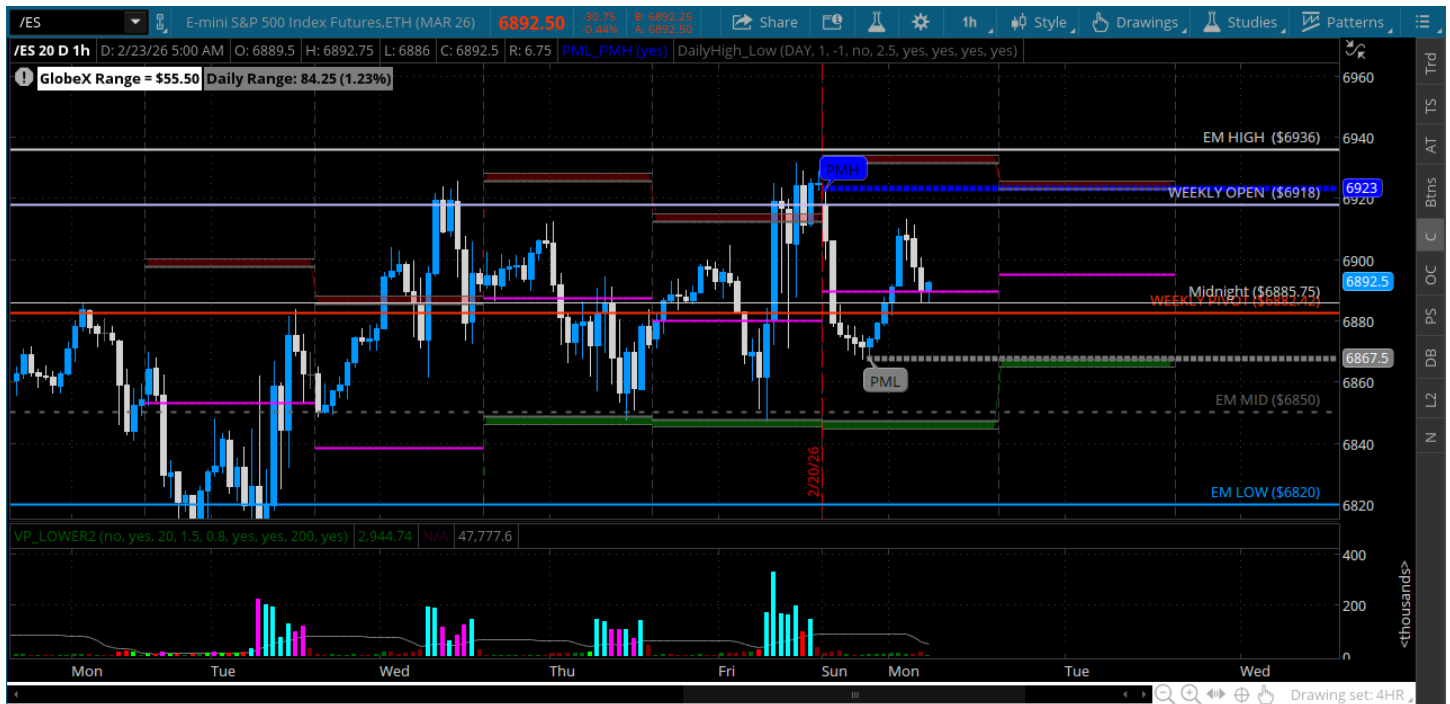
## Pre-Market Charts to Watch

### Monday, February 23, 2025 Pre-Market /NQ 1 Hour Chart



- Still in this zone - weekly pivot should give us some clues
- Trade the range until it breaks
- Will be watching for a test of 24750 this morning - if we can hold that we have a shot at retesting the 25k
- Bearish under the 24633

## Monday, February 23, 2025 Pre-Market /ES 1 Hour Chart



- Bulls need to hold weekly pivot and push to the roundy
- Under weekly pivot can retest the overnight lows and the 6862/6850
- Those need to hold for bulls
- Bearish under the 6842

*Disclaimer:*

Disclaimer: Neither TheoTrade or any of its officers, directors, employees, other personnel, representatives, agents or independent contractors is, in such capacities, a licensed financial adviser, registered investment adviser, registered broker-dealer or FINRA|SIPC|NFA-member firm. TheoTrade does not provide investment or financial advice or make investment recommendations. TheoTrade is not in the business of transacting trades, nor does TheoTrade agree to direct your brokerage accounts or give trading advice tailored to your particular situation. Nothing contained in our content constitutes a solicitation, recommendation, promotion, or endorsement of any particular security, other investment product, transaction or investment. Trading Futures, Options on Futures, and retail off-exchange foreign currency transactions involves substantial risk of loss and is not suitable for all investors. You should carefully consider whether trading is suitable for you in light of your circumstances, knowledge, and financial resources. You may lose all or more of your initial investment. Opinions, market data, and recommendations are subject to change at any time. Past Performance is not necessarily indicative of future results.