



## *Tony Rago's Pre-Market Playbook*

---

### ★ Overnight Range

- ES 24.75
- NQ 141.25
- VIX 21.01

- ★ **Bulls** need to hold above yest closes **6858 and 24786-- long above these**
- ★ Breakouts are above yesterday's highs **6930 and 25059 - aggressive longs** (await for confirmation with a new high and a retest of the highs from above that holds)
- ★ **Bears** need under overnight lows **short under 6850 and 24761**
- ★ Breakdown is below yest lows **6832 and 24668 -- aggressive shorts** (wait for confirmation with a new low and a retest of the lows from below that hold)
- ★ **RANGEBOUND: 2 Way trade long and shorts will work** to get the day done
- ★ Keep it simple and be patient for confirmation on either side or establish the range if we are going to be rangebound
- ★ Confirm rally continuation with sustained trade over the 30min IB High and likewise
- ★ bearish under the IB Low

### ECON:

- 9:00 am S&P Case-Shiller home price index (20 cities)
- 9:00 am Atlanta Fed President Raphael Bostic speaks
- 9:15 am Fed governor Christopher Waller speaks
- 9:30 am Fed governor Lisa Cook speaks
- 10:00 am Wholesale inventories
- 10:00 am Consumer confidence

## *Pre-Market Trading Levels for today*

---

### GLOBEX

#### NQ

★ **HIGH:** 24902.25

★ **LOW:** 24761.00

★ **Bull Case** defend the 24633 to seek the 24750, 24812, 24833, 24912, 25000, 25106, 25250, 25312, 25333, 25412, 25500

★ **Bear Case** seal the 25106 to seek the 25250, 24912, 24833, 24750, 24633, 24612, 24500, 24412, 24333, 24312, 24250, 24106, 24000

★ **Overnight Range - 141.25**

#### NQ (Prev. Day)

★ High 25059.75

★ Low 24668.00

★ Close 24786.25

**NQ (Week Open) 24789.75**

## S&P 500

★ **HIGH** - 6875.00

★ **LOW** - 6850.25

★ **Bull Case:** defend the 6850 to seek the 6862, 6888, 6900, 6912, 6917, 6926, 6933, 6950, 6962

★ **Bear Case:** seal the 6933 to seek the 6926, 6917, 6912, 6900, 6888, 6877, 6862, 6850, 6833, 6826, 6817, 6800, 6788, 6762, 6750

★ **Overnight Range** - 24.75

### ES (Prev Day)

★ High 6930.25

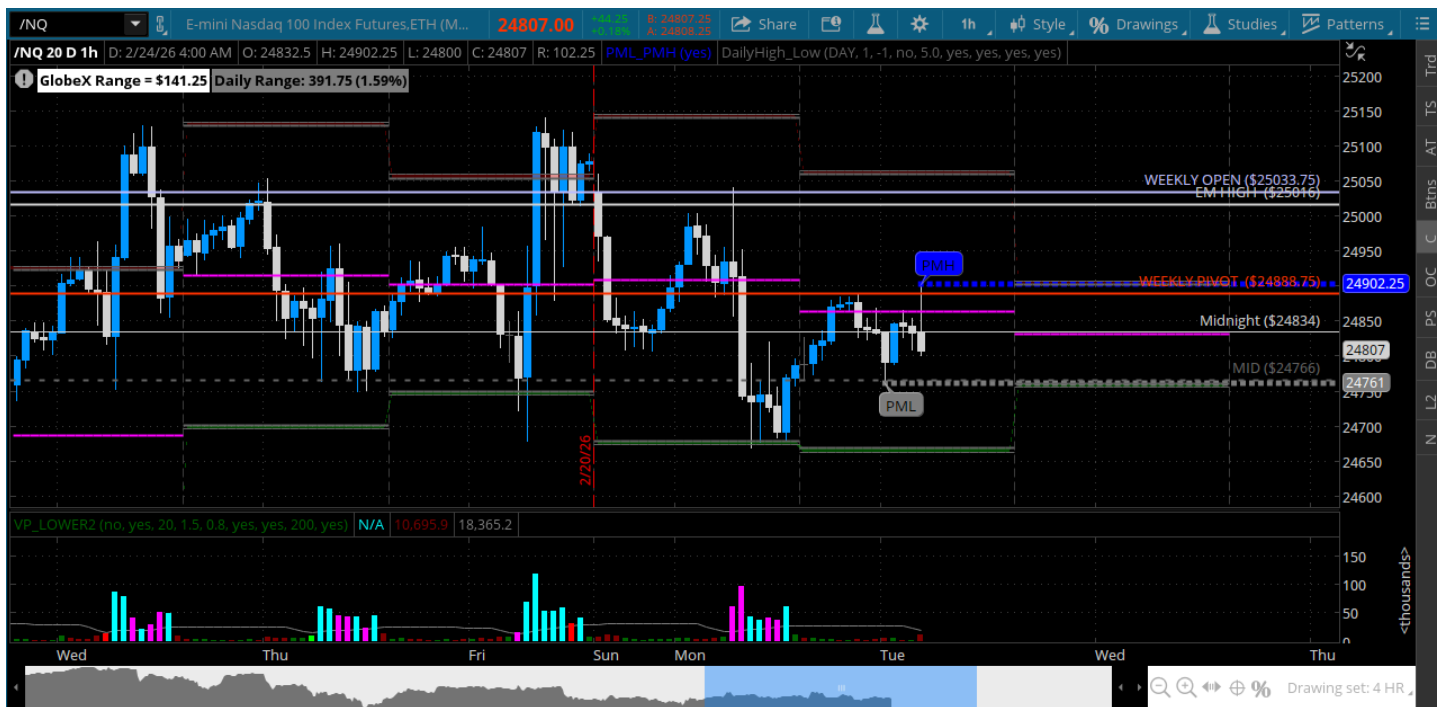
★ Low 6832.75

★ Close 6858.25

### ES (Week Open) 6918

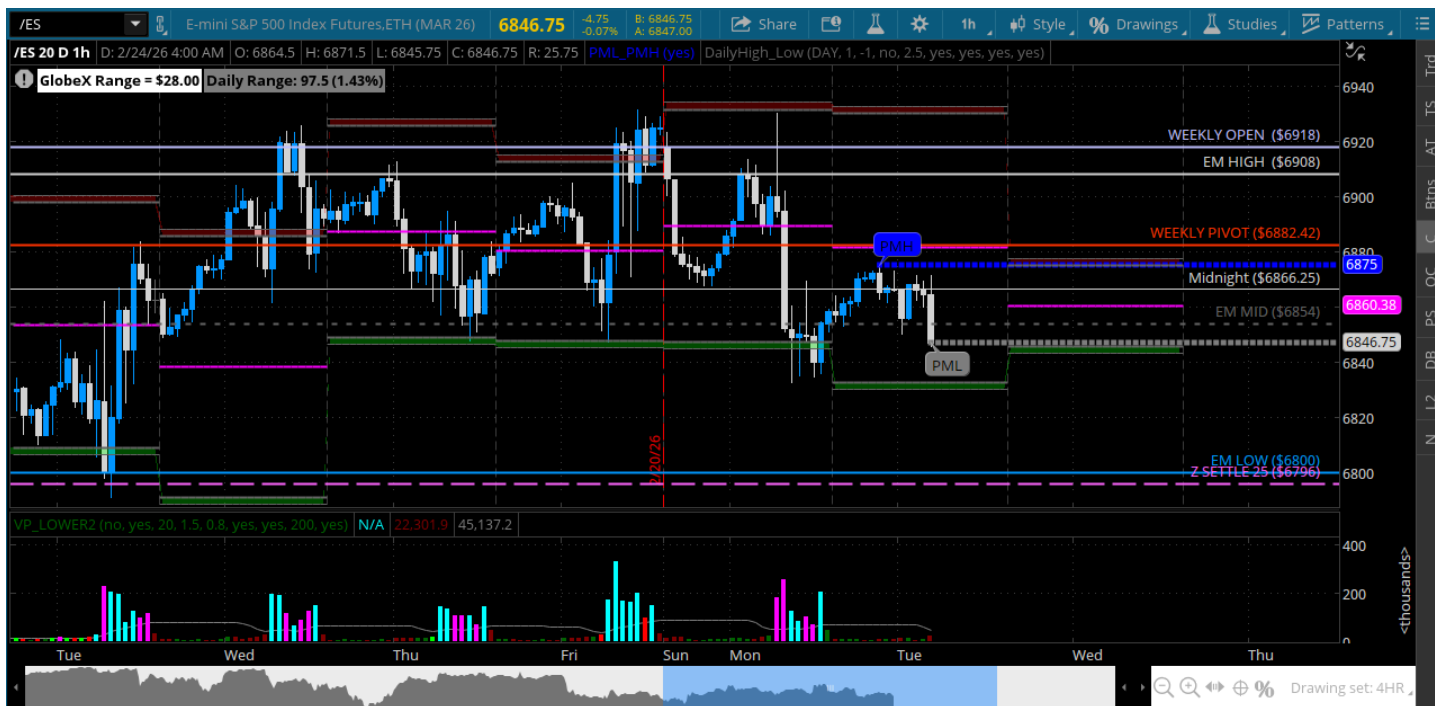
# Pre-Market Charts to Watch

## Tuesday, February 24, 2025 Pre-Market /NQ 1 Hour Chart



- Weekly pivot still acting as resistance overnight
- Bulls need above that and hold it on a daily close

## Tuesday, February 24, 2025 Pre-Market /ES 1 Hour Chart



- Bulls look like crap -- cant hold a rally and leaving lower highs on higher time frames
- Bears have an advantage here to retest the 6800 and the 6796
- Bears need to defend a test of weekly pivot from below
- Bulls want to show up and close above the weekly pivot

*Disclaimer:*

Disclaimer: Neither TheoTrade or any of its officers, directors, employees, other personnel, representatives, agents or independent contractors is, in such capacities, a licensed financial adviser, registered investment adviser, registered broker-dealer or FINRA|SIPC|NFA-member firm. TheoTrade does not provide investment or financial advice or make investment recommendations. TheoTrade is not in the business of transacting trades, nor does TheoTrade agree to direct your brokerage accounts or give trading advice tailored to your particular situation. Nothing contained in our content constitutes a solicitation, recommendation, promotion, or endorsement of any particular security, other investment product, transaction or investment. Trading Futures, Options on Futures, and retail off-exchange foreign currency transactions involves substantial risk of loss and is not suitable for all investors. You should carefully consider whether trading is suitable for you in light of your circumstances, knowledge, and financial resources. You may lose all or more of your initial investment. Opinions, market data, and recommendations are subject to change at any time. Past Performance is not necessarily indicative of future results.