



Tony Rago's Pre-Market Playbook

★ Overnight Range

- ES 28.00
- NQ 153.50
- VIX 17.56

- ★ **Bulls** need to hold above yest closes **6975 and 25461-- long above these**
- ★ Breakouts are above yesterday's highs **6983 and 25494- aggressive longs** (await for confirmation with a new high and a retest of the highs from above that holds)
- ★ **Bears** need under overnight lows **short under 6941 and 25264**
- ★ Breakdown is below yest lows **6892 and 24992 -- aggressive shorts** (wait for confirmation with a new low and a retest of the lows from below that hold)
- ★ **RANGEBOUND: 2 Way trade long and shorts will work** to get the day done
- ★ Keep it simple and be patient for confirmation on either side or establish the range if we are going to be rangebound
- ★ Confirm rally continuation with sustained trade over the 30min IB High and likewise
- ★ bearish under the IB Low

ECON:

- 8:30 am Initial jobless claims
- 10:00 am Fed Vice Chair for Supervision Michelle Bowman testifies to Congress

Pre-Market Trading Levels for today

GLOBEX

NQ

★ **HIGH:** 25418.25

★ **LOW:** 24264.750

★ **Bull Case** defend the 25250 to seek the 25312, 25333, 25412, 25500, 25612, 25633, 25750, 25812, 25833, 25912, 26000

★ **Bear Case** seal the 25500 to seek the 25412, 25333, 25312, 25250, 25106, 25000, 24912, 24833, 24750, 24633, 24612, 24500, 24412

★ **Overnight Range - 153.50**

NQ (Prev. Day)

★ High 25494.75

★ Low 24992.00

★ Close 25461.75

NQ (Week Open) 25036.00

S&P 500

★ **HIGH** - 6969.25

★ **LOW** - 6941.25

★ **Bull Case:** defend the 6933 to seek the 6950, 6962, 6977, 6988, 7000, 7012, 7017, 7026, 7033

★ **Bear Case:** seal the 6988 to seek the 6977, 6962, 6950, 6942, 6933, 6926, 6917, 6912, 6900, 6888, 6877, 6862, 6850, 6833, 6826, 6817, 6800, 6788, 6762, 6750

★ **Overnight Range** - 28.00

ES (Prev Day)

★ High 6983.75

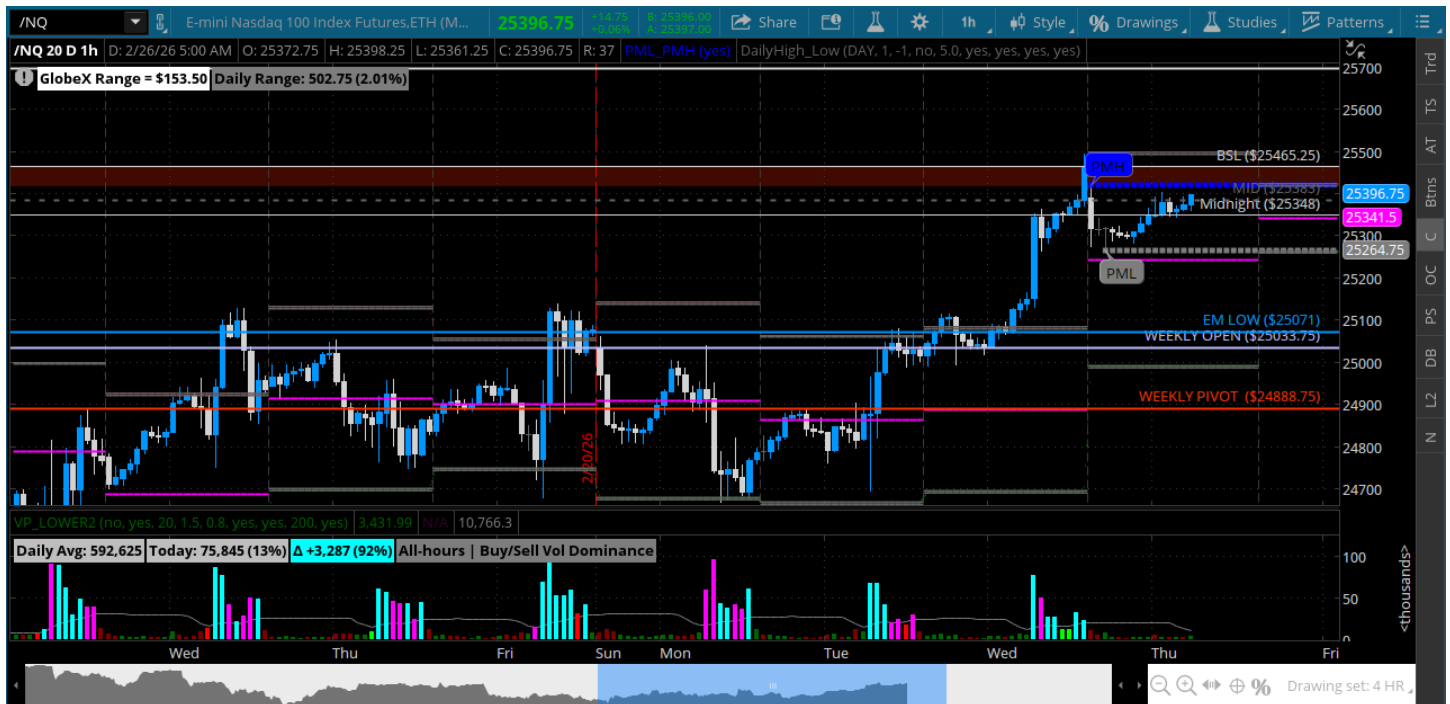
★ Low 6892.25

★ Close 6975.50

ES (Week Open) 6918

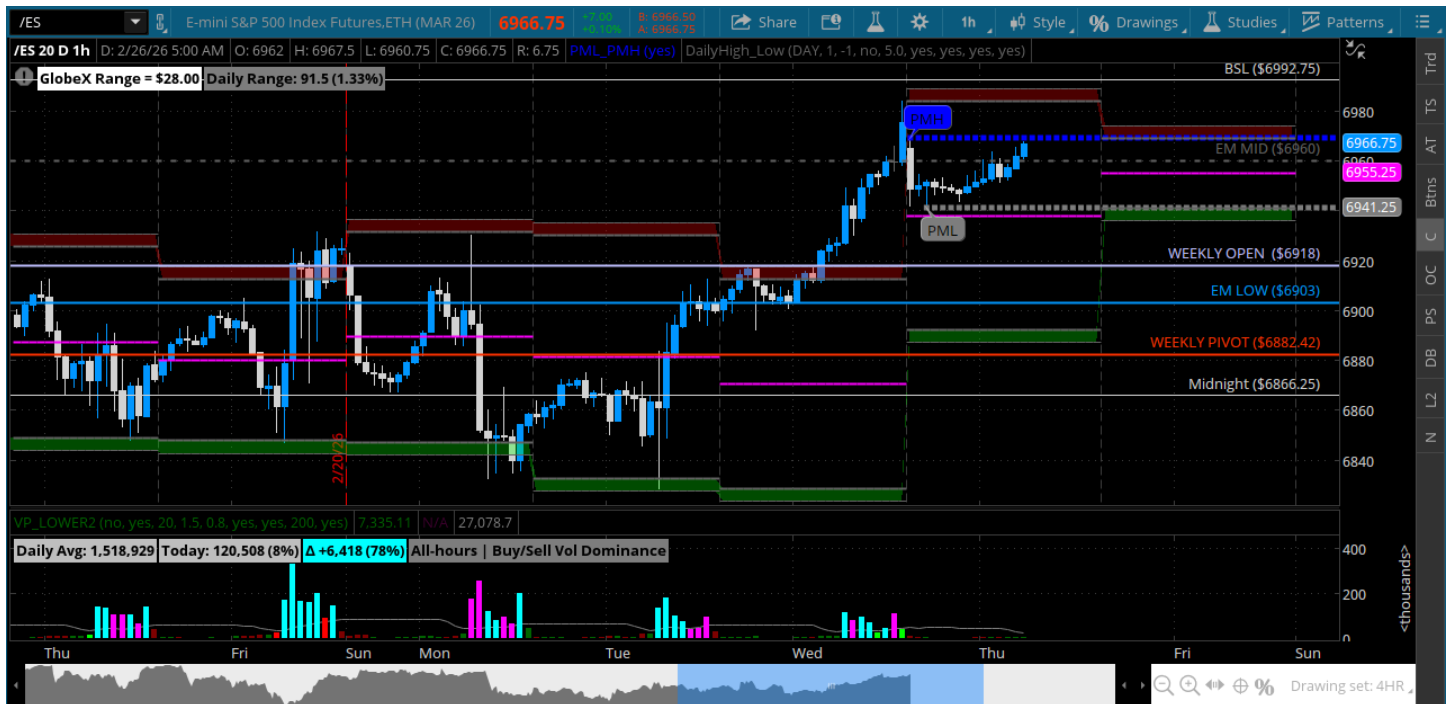
Pre-Market Charts to Watch

Thursday, February 26, 2025 Pre-Market /NQ 1 Hour Chart



- We have broken above the top of the big sideways zone on the hourly and 4hr
- Still some resistance above on the longer time frames
- Lets see how the tape digests the breakout yesterday -- do we fall back into the zone?
- A retest of the 25106 is the top of it -- bulls need to hold that
- 25500 could hold it in - lets see if bears want to push us lower at the open

Thursday, February 26, 2025 Pre-Market /ES 1 Hour Chart



- The 7k roundy is in eye shot here if bulls can stand their ground and hold a pullback to the 6962/6950
- Some buy-side liquidity on the 6992 - let's see if that gets taken this morning
- Will be watching for resistance at the 6977 and 6988 on a test from below
- Bearish under 6900

Disclaimer:

Disclaimer: Neither TheoTrade or any of its officers, directors, employees, other personnel, representatives, agents or independent contractors is, in such capacities, a licensed financial adviser, registered investment adviser, registered broker-dealer or FINRA|SIPC|NFA-member firm. TheoTrade does not provide investment or financial advice or make investment recommendations. TheoTrade is not in the business of transacting trades, nor does TheoTrade agree to direct your brokerage accounts or give trading advice tailored to your particular situation. Nothing contained in our content constitutes a solicitation, recommendation, promotion, or endorsement of any particular security, other investment product, transaction or investment. Trading Futures, Options on Futures, and retail off-exchange foreign currency transactions involves substantial risk of loss and is not suitable for all investors. You should carefully consider whether trading is suitable for you in light of your circumstances, knowledge, and financial resources. You may lose all or more of your initial investment. Opinions, market data, and recommendations are subject to change at any time. Past Performance is not necessarily indicative of future results.