



Tony Rago's Pre-Market Playbook

★ Overnight Range

- ES 64.50
- NQ 305.00
- VIX 21.59

- ★ **Bulls** need to hold above yest closes **6903 and 25028-- long above these**
- ★ Breakouts are above yesterday's highs **6970 and 25418- aggressive longs** (await for confirmation with a new high and a retest of the highs from above that holds)
- ★ **Bears** need under overnight lows **short under 6878 and 24921**
- ★ Breakdown is below yest lows **6870 and 24861 -- aggressive shorts** (wait for confirmation with a new low and a retest of the lows from below that hold)
- ★ **RANGEBOUND: 2 Way trade long and shorts will work** to get the day done
- ★ Keep it simple and be patient for confirmation on either side or establish the range if we are going to be rangebound
- ★ Confirm rally continuation with sustained trade over the 30min IB High and likewise
- ★ bearish under the IB Low

ECON:

- 8:30 am Core PPI
- 10:00 am Construction spending (delayed report)
- 10:00 am Construction spending
- 9:45 am Chicago Business Barometer (PMI)

Pre-Market Trading Levels for today

GLOBEX

NQ

★ **HIGH:** 25098.75

★ **LOW:** 24793.75

★ **Bull Case** defend the 24833 to seek the 24912, 25000, 25106, 25250, 25312, 25333, 25412, 25500, 25612, 25633, 25750, 25812, 25833, 25912, 26000

★ **Bear Case** seal the 25500 to seek the 25412, 25333, 25312, 25250, 25106, 25000, 24912, 24833, 24750, 24633, 24612, 24500, 24412

★ **Overnight Range - 305.00**

NQ (Prev. Day)

★ High 25418.25

★ Low 24861.75

★ Close 25028.00

NQ (Week Open) 25036.00

S&P 500

★ **HIGH** - 6915.50

★ **LOW** - 6851.00

★ **Bull Case:** defend the 6850 to seek the 6862, 6877, 6888, 6900, 6912, 6917, 6926, 6933, 6942, 6950

★ **Bear Case:** seal the 6962 to seek the 6950, 6942, 6933, 6926, 6917, 6912, 6900, 6888, 6877, 6862, 6850, 6833, 6826, 6817, 6800, 6788, 6762, 6750

★ **Overnight Range** - 64.50

ES (Prev Day)

★ High 6970.75

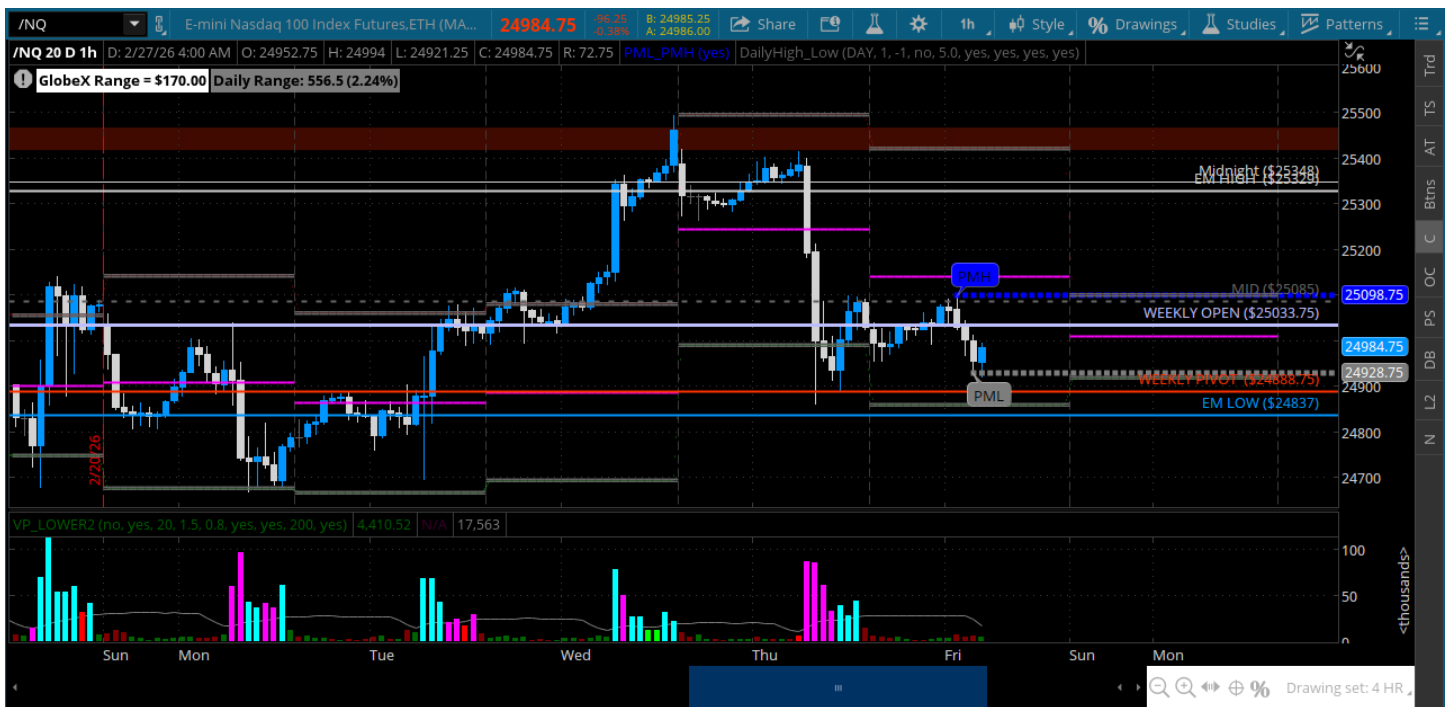
★ Low 6870.75

★ Close 6903.75

ES (Week Open) 6918

Pre-Market Charts to Watch

Friday, February 27, 2026 Pre-Market /NQ 1 Hour Chart



- Price slips right back in to the big sideways zone - trade the range we have
- Solid 500 handle range – 25412 to 24912
- Still battling over the 25k roundy – that remains the deal
- Weekly pivot was defended overnight
- Lets see how we trade around that

Thursday, February 27, 2026 Pre-Market /ES 1 Hour Chart



- Bulls failed miserably yesterday - price slips back down into the sideways zone
- Weekly pivot is the deal today – will use that as the bull/bear
- Trade the range we have until it breaks – big moves to be had
-

Disclaimer:

Disclaimer: Neither TheoTrade or any of its officers, directors, employees, other personnel, representatives, agents or independent contractors is, in such capacities, a licensed financial adviser, registered investment adviser, registered broker-dealer or FINRA|SIPC|NFA-member firm. TheoTrade does not provide investment or financial advice or make investment recommendations. TheoTrade is not in the business of transacting trades, nor does TheoTrade agree to direct your brokerage accounts or give trading advice tailored to your particular situation. Nothing contained in our content constitutes a solicitation, recommendation, promotion, or endorsement of any particular security, other investment product, transaction or investment. Trading Futures, Options on Futures, and retail off-exchange foreign currency transactions involves substantial risk of loss and is not suitable for all investors. You should carefully consider whether trading is suitable for you in light of your circumstances, knowledge, and financial resources. You may lose all or more of your initial investment. Opinions, market data, and recommendations are subject to change at any time. Past Performance is not necessarily indicative of future results.