



## *Tony Rago's Pre-Market Playbook*

### ★ Overnight Range

- ES 50.50
- NQ 256.00
- VIX 20.04

- ★ **Bulls** need to hold above yest closes **6892 and 24936-- long above these**
- ★ Breakouts are above yesterday's highs **6925 and 25128 - aggressive longs** (await for confirmation with a new high and a retest of the highs from above that holds)
- ★ **Bears** need under overnight lows **short under 6866 and 24815**
- ★ Breakdown is below yest lows **6848 and 24700 -- aggressive shorts** (wait for confirmation with a new low and a retest of the lows from below that hold)
- ★ **RANGEBOUND: 2 Way trade long and shorts will work** to get the day done
- ★ Keep it simple and be patient for confirmation on either side or establish the range if we are going to be rangebound
- ★ Confirm rally continuation with sustained trade over the 30min IB High and likewise
- ★ bearish under the IB Low

### ECON:

- 8:30 am Initial jobless claims
- 8:30 am U.S. trade deficit
- 8:30 am Philadelphia Fed manufacturing survey
- 8:30 am Advanced U.S. trade balance in goods
- 8:30 am Fed Vice Chair for Supervision Michelle Bowman speaks
- 9:00 am Minneapolis Fed President Neel Kashkari speaks
- 10:00 am Leading economic index

## *Pre-Market Trading Levels for today*

---

### GLOBEX

#### NQ

★ **HIGH:** 25054.00

★ **LOW:** 24798.00

★ **Bull Case** defend the 24633 to seek the 24750, 24812, 24833, 24912, 25000, 25106, 25250, 25312, 25333, 25412, 25500

★ **Bear Case** seal the 25250 to seek the 25106, 25000, 24912, 24833, 24750, 24633, 24612, 24500, 24412, 24333, 24312, 24250, 24106, 24000

★ **Overnight Range - 256.00**

#### NQ (Prev. Day)

★ High 25128.25

★ Low 24700.75

★ Close 24936.50

**NQ (Week Open) 24789.75**

## S&P 500

★ **HIGH** - 6912.50

★ **LOW** - 6862.00

★ **Bull Case:** defend the 6850 to seek the 6862, 6888, 6900, 6912, 6917, 6926, 6933, 6950, 6962

★ **Bear Case:** seal the 6933 to seek the 6926, 6917, 6912, 6900, 6888, 6877, 6862, 6850, 6833, 6826, 6817, 6800, 6788, 6762, 6750

★ **Overnight Range** - 50.50

### ES (Prev Day)

★ High 6925.75

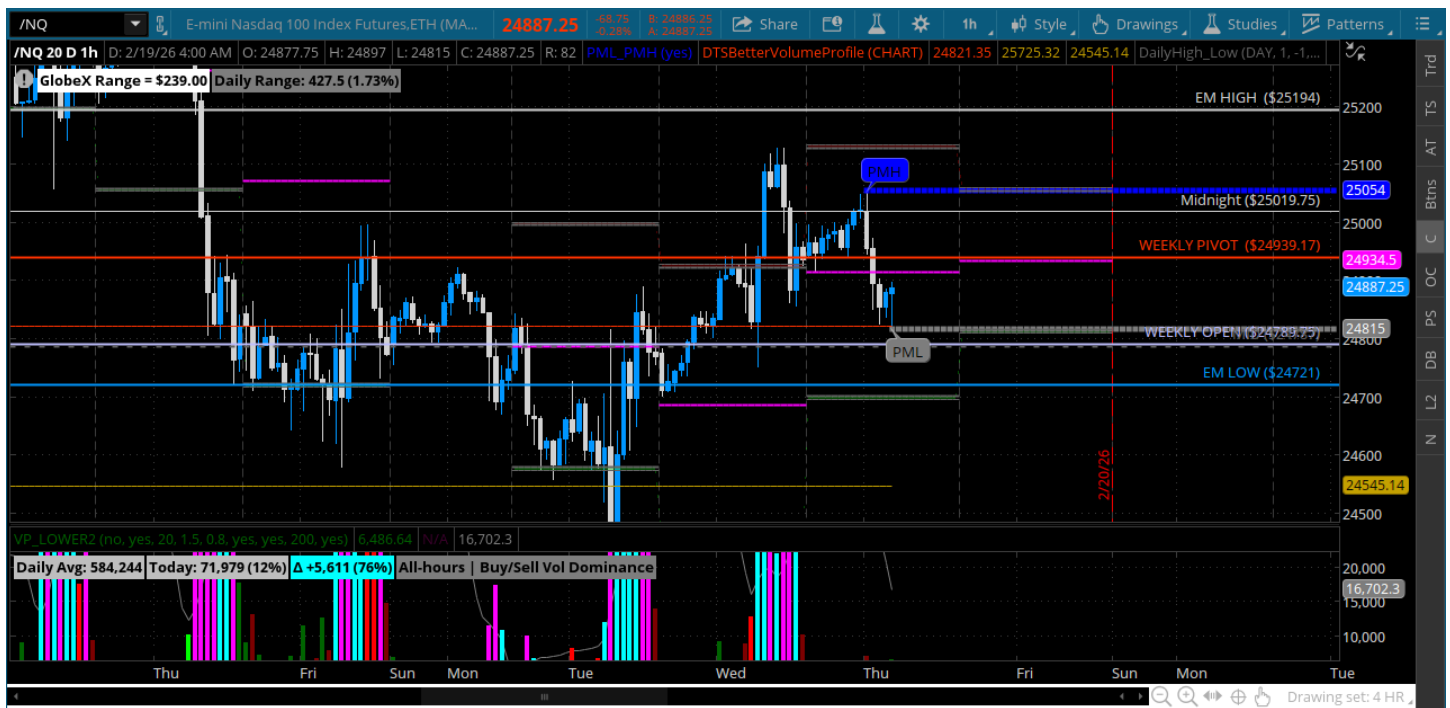
★ Low 6848.75

★ Close 6892.00

**ES (Week Open) 6852.50**

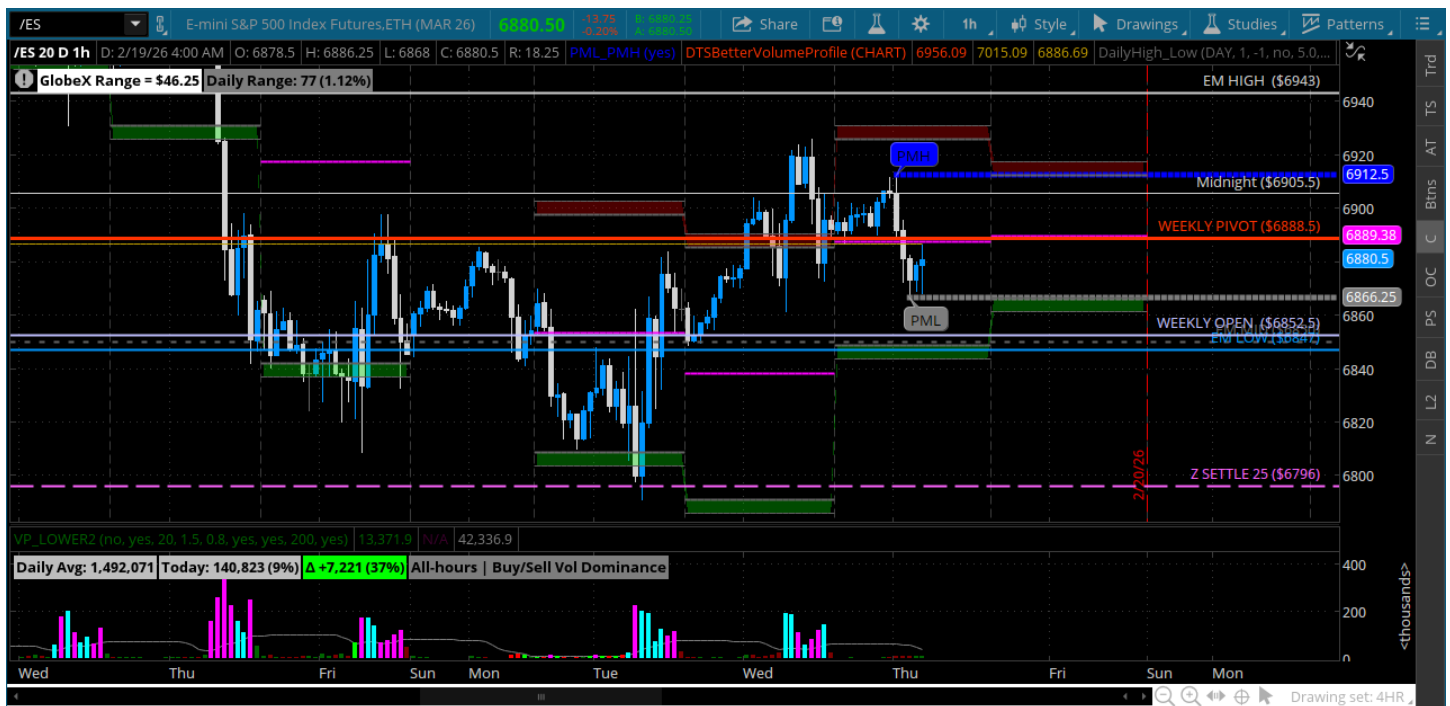
## Pre-Market Charts to Watch

Thursday, February 19, 2025 Pre-Market /NQ 1 Hour Chart



- Bulls push price up to 25106 yesterday and couldnt hold it above 25000 on the close
- Overnight pushes back to the 25833 and under weekly pivot
- Price did bust the lower highs on some longer time frames - bulls just need to hold the line -- bulls still vulnerable
- Bears need under the weekly open and close below today

## Thursday, February 19, 2025 Pre-Market /ES 1 Hour Chart



- Bulls had a day but struggled to hold price above 6900
- That is key for bulls - hold weekly pivot and close above 6900
- Makes them vulnerable for another push down - they need to hold the 6850 on a test
- Bears want under the 6850 and push below yesterdays lows

*Disclaimer:*

Disclaimer: Neither TheoTrade or any of its officers, directors, employees, other personnel, representatives, agents or independent contractors is, in such capacities, a licensed financial adviser, registered investment adviser, registered broker-dealer or FINRA|SIPC|NFA-member firm. TheoTrade does not provide investment or financial advice or make investment recommendations. TheoTrade is not in the business of transacting trades, nor does TheoTrade agree to direct your brokerage accounts or give trading advice tailored to your particular situation. Nothing contained in our content constitutes a solicitation, recommendation, promotion, or endorsement of any particular security, other investment product, transaction or investment. Trading Futures, Options on Futures, and retail off-exchange foreign currency transactions involves substantial risk of loss and is not suitable for all investors. You should carefully consider whether trading is suitable for you in light of your circumstances, knowledge, and financial resources. You may lose all or more of your initial investment. Opinions, market data, and recommendations are subject to change at any time. Past Performance is not necessarily indicative of future results.