



## *Tony Rago's Pre-Market Playbook*

---

- ★ ES WEEKLY PIVOT 6895.83
- ★ NQ WEEKLY PIVOT 25038.50
- ★ ES MONTHLY PIVOT 6884.67
- ★ NQ MONTHLY PIVOT 25073.42
- ★ **Overnight Range**
  - ES 88.50
  - NQ 424.25
  - VIX 23.36 **HIGH VOLATILITY**
- ★ **Bulls** need to hold above yest closes **6875 and 24952-- long above these**
- ★ Breakouts are above yesterday's highs **6915 and 25098- aggressive longs** (await for confirmation with a new high and a retest of the highs from above that holds)
- ★ **Bears** need under overnight lows **short under 6768 and 24477**
- ★ Breakdown is below yest lows **6841 and 24782 -- aggressive shorts** (wait for confirmation with a new low and a retest of the lows from below that hold)
- ★ **RANGEBOUND: 2 Way trade long and shorts will work** to get the day done
- ★ Keep it simple and be patient for confirmation on either side or establish the range if we are going to be rangebound
- ★ Confirm rally continuation with sustained trade over the 30min IB High and likewise
- ★ bearish under the IB Low

### **ECON:**

- 9:45 am S&P final U.S. manufacturing PMI
- 10:00 am ISM manufacturing

## *Pre-Market Trading Levels for today*

---

### GLOBEX

#### NQ

★ **HIGH:** 24901.25

★ **LOW:** 24477.00

★ **Bull Case** defend the 24333 to seek the 24412, 24500, 24612, 24633, 24750, 24812, 248333, 24912, 25000, 25106, 25250, 25312, 25333, 25412

★ **Bear Case** seal the 25106 to seek the 25000, 24912, 24833, 24750, 24633, 24612, 24500, 24412, 24333, 24312

★ **Overnight Range - 424.25**

#### NQ (Prev. Day)

★ High 25098.75

★ Low 24782.00

★ Close 24952.75

**NQ (Week Open) 24682.50**

## S&P 500

★ **HIGH** - 6857.00

★ **LOW** - 6768.50

★ **Bull Case:** defend the 6750 to seek the 6762, 6777, 6788, 6800, 6812, 6817, 6826, 6833, 6842, 6850

★ **Bear Case:** seal the 6862 to seek the 6850, 6842, 6833, 6826, 6817, 6812, 6800, 6788, 6777, 6762, 6750, 6733, 6726, 6717, 6700

★ **Overnight Range** - 88.50

### ES (Prev Day)

★ High 6915.50

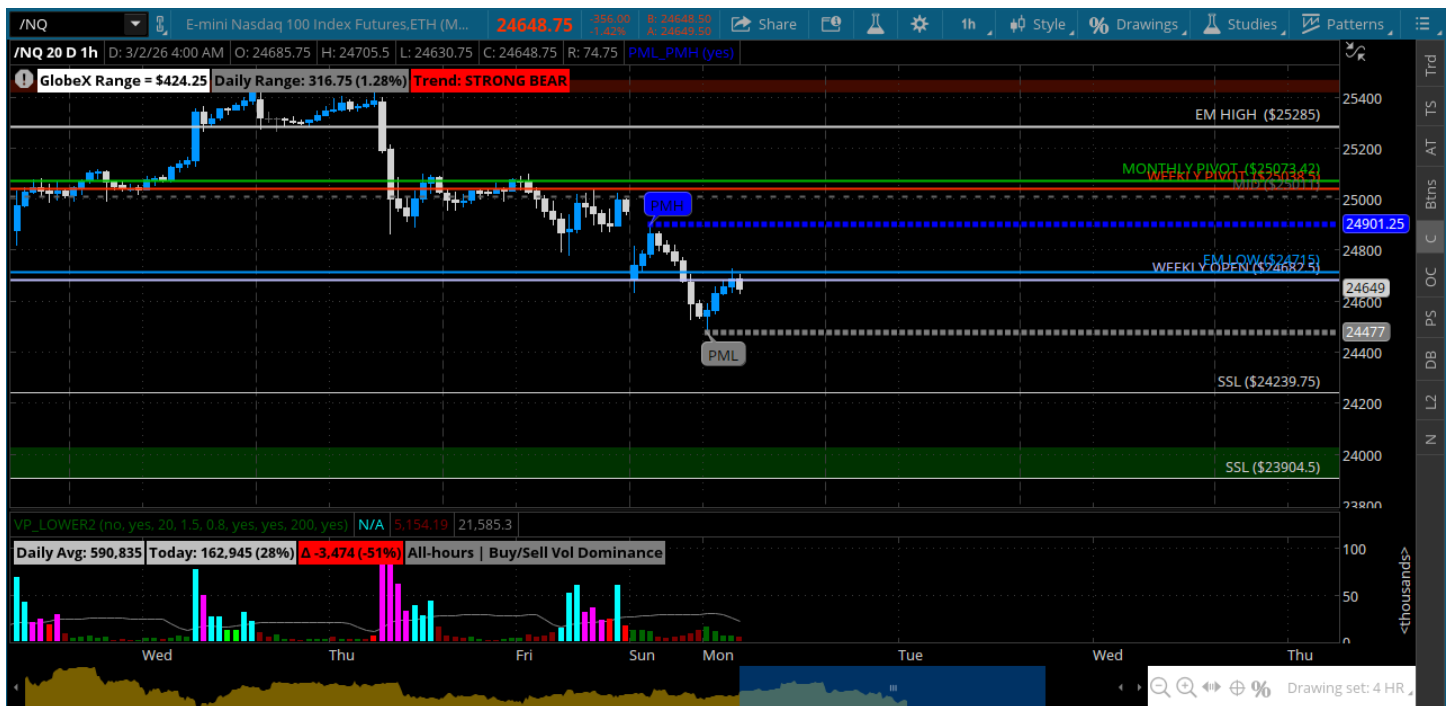
★ Low 6841.50

★ Close 6875.25

**ES (Week Open) 6918**

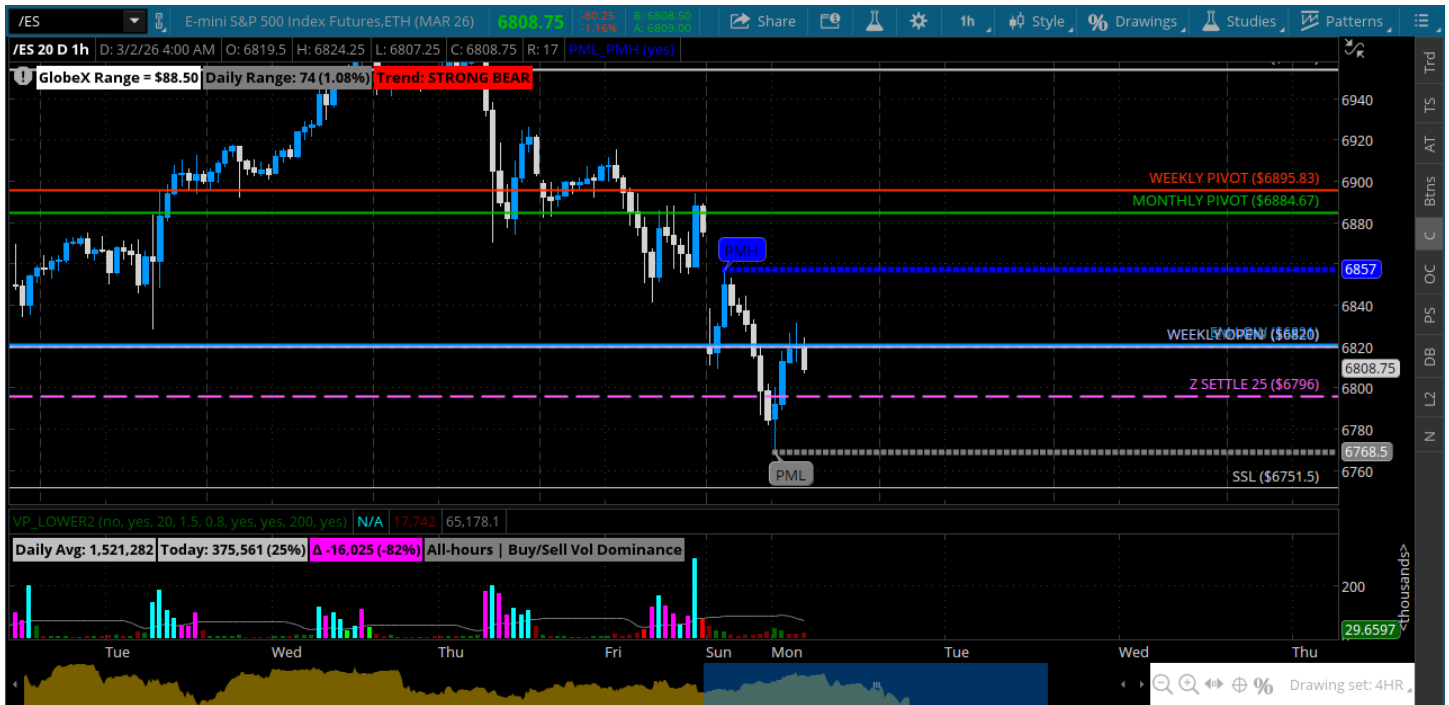
## Pre-Market Charts to Watch

Monday, March 2, 2026 Pre-Market /NQ 1 Hour Chart



- Gap down on war news – going to be a very volatile day today
- VIX over 23
- Will let it open and see where we find some support
- Bottom of the big sideways zone is 24250 and 23900 from November

## Monday, March 2, 2026 Pre-Market /ES 1 Hour Chart



- Big gap down on war news
- Will be watching how we react to the 6796 settle at the open
- That is the bull/bear for ES - sustained trade under it gets very slippery
- Bulls need to contain this around this level

*Disclaimer:*

Disclaimer: Neither TheoTrade or any of its officers, directors, employees, other personnel, representatives, agents or independent contractors is, in such capacities, a licensed financial adviser, registered investment adviser, registered broker-dealer or FINRA|SIPC|NFA-member firm. TheoTrade does not provide investment or financial advice or make investment recommendations. TheoTrade is not in the business of transacting trades, nor does TheoTrade agree to direct your brokerage accounts or give trading advice tailored to your particular situation. Nothing contained in our content constitutes a solicitation, recommendation, promotion, or endorsement of any particular security, other investment product, transaction or investment. Trading Futures, Options on Futures, and retail off-exchange foreign currency transactions involves substantial risk of loss and is not suitable for all investors. You should carefully consider whether trading is suitable for you in light of your circumstances, knowledge, and financial resources. You may lose all or more of your initial investment. Opinions, market data, and recommendations are subject to change at any time. Past Performance is not necessarily indicative of future results.