



## *Tony Rago's Pre-Market Playbook*

---

### ★ Overnight Range

- ES 143.25
- NQ 641.00
- VIX 25.72 **HIGH VOLATILITY**

★ **Bulls** need to hold above yest closes **6884** and **24995**-- long above these

★ Breakouts are above yesterday's highs **6911** and **25101**- **aggressive longs** (await for confirmation with a new high and a retest of the highs from above that holds

★ **Bears** need under overnight lows **short under 6742** and **24370**

★ Breakdown is below yest lows **6868** and **24477** -- **aggressive shorts** (wait for

★ confirmation with a new low and a retest of the lows from below that hold)

★ **RANGEBOUND: 2 Way trade long and shorts will work** to get the day done

★ Keep it simple and be patient for confirmation on either side or establish the range if

★ we are going to be rangebound

★ Confirm rally continuation with sustained trade over the 30min IB High and likewise

★ bearish under the IB Low

### ECON:

- 9:55 am New York Fed President John Williams remarks
- 10:10 am Kansas City Fed President Jeff Schmid speaks
- 11:55 am Minneapolis Fed President Neel Kashkari interview

## *Pre-Market Trading Levels for today*

---

### GLOBEX

#### NQ

★ **HIGH:** 25011.00

★ **LOW:** 24370.00

★ **Bull Case** defend the 24333 to seek the 24412, 24500, 24612, 24633, 24750, 24812, 248333, 24912, 25000, 25106, 25250, 25312, 25333, 25412

★ **Bear Case** seal the 25000 to seek the 24912, 24833, 24750, 24633, 24612, 24500, 24412, 24333, 24312

★ **Overnight Range - 641.00**

#### NQ (Prev. Day)

★ High 25101.00

★ Low 24477.00

★ Close 24995.75

**NQ (Week Open) 24682.50**

## S&P 500

★ **HIGH** - 6886.00

★ **LOW** - 6742.75

★ **Bull Case:** defend the 6750 to seek the 6762, 6777, 6788, 6800, 6812, 6817, 6826, 6833, 6842, 6850

★ **Bear Case:** seal the 6862 to seek the 6850, 6842, 6833, 6826, 6817, 6812, 6800, 6788, 6777, 6762, 6750, 6733, 6726, 6717, 6700

★ **Overnight Range** - 143.25

### ES (Prev Day)

★ High 6911.25

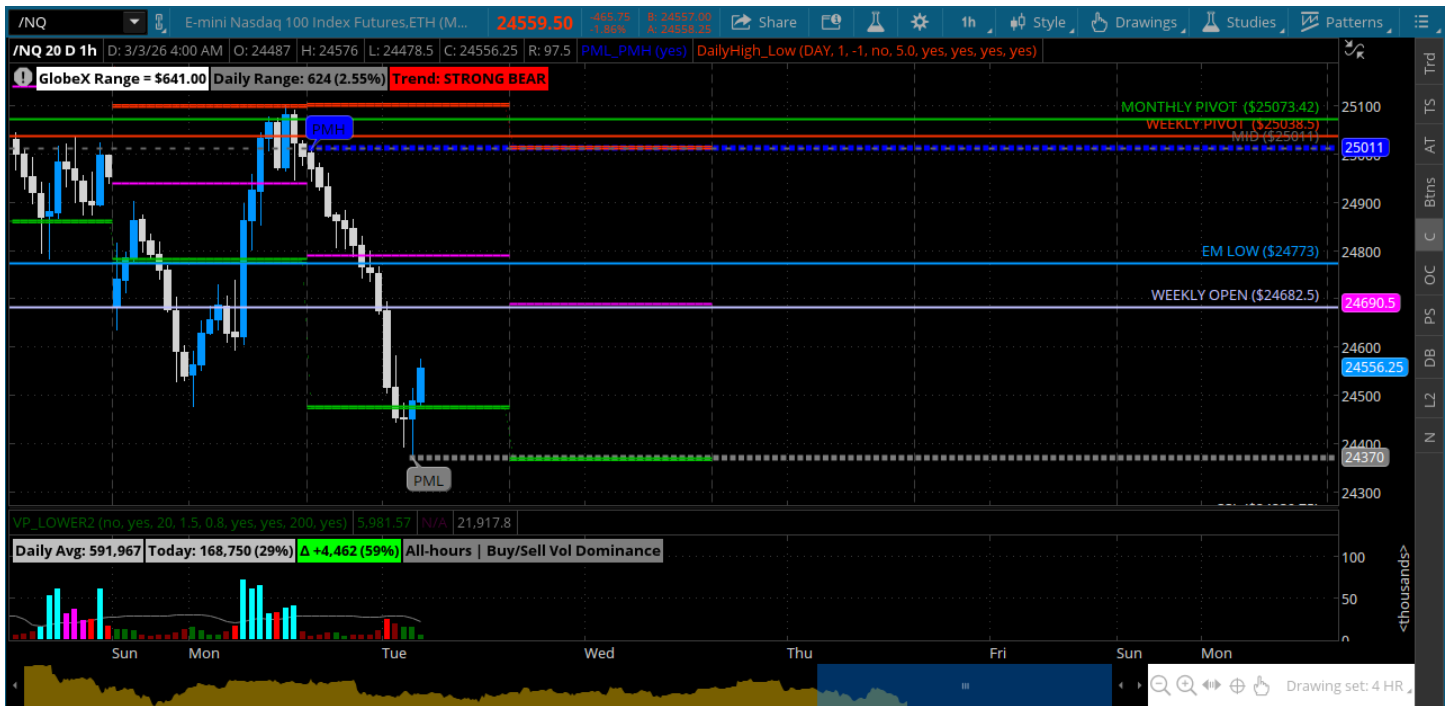
★ Low 6768.50

★ Close 6884.50

**ES (Week Open) 6820.00**

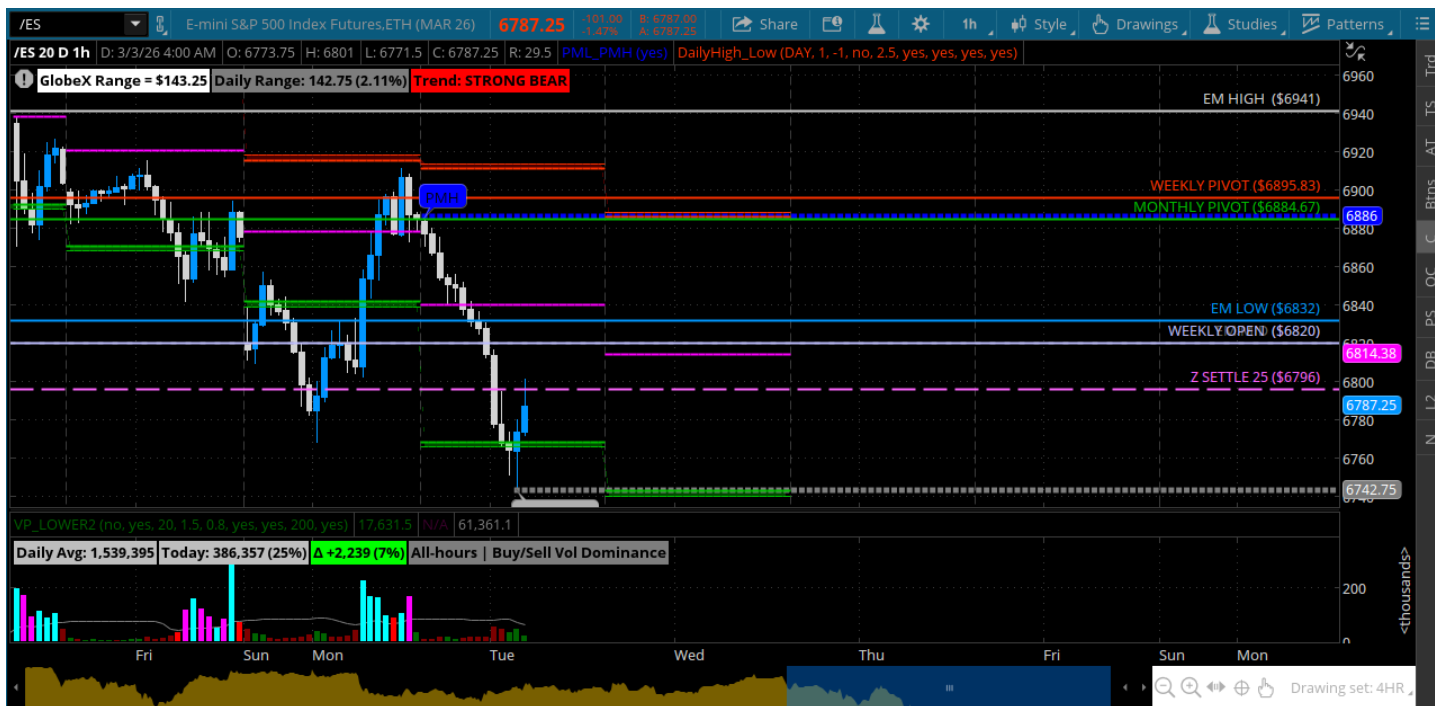
# Pre-Market Charts to Watch

## Tuesday, March 3, 2026 Pre-Market /NQ 1 Hour Chart



- Big jam job to the upside for the first of the month and right back to the lows in the overnight
- All about the weekly open today -- if we cannot hold it we should move to the 24250
- Will be watching how we trade around yesterdays lows 24477

## Tuesday, March 3, 2026 Pre-Market /ES 1 Hour Chart



- First of the month ripper to the upside and sell off overnight back to 6750
- Will be watching how we deal with 6796 in RTH -- that is the bull/bear today
- Secondary to that yesterdays lows are in play - bulls need to hold them in RTH

*Disclaimer:*

Disclaimer: Neither TheoTrade or any of its officers, directors, employees, other personnel, representatives, agents or independent contractors is, in such capacities, a licensed financial adviser, registered investment adviser, registered broker-dealer or FINRA|SIPC|NFA-member firm. TheoTrade does not provide investment or financial advice or make investment recommendations. TheoTrade is not in the business of transacting trades, nor does TheoTrade agree to direct your brokerage accounts or give trading advice tailored to your particular situation. Nothing contained in our content constitutes a solicitation, recommendation, promotion, or endorsement of any particular security, other investment product, transaction or investment. Trading Futures, Options on Futures, and retail off-exchange foreign currency transactions involves substantial risk of loss and is not suitable for all investors. You should carefully consider whether trading is suitable for you in light of your circumstances, knowledge, and financial resources. You may lose all or more of your initial investment. Opinions, market data, and recommendations are subject to change at any time. Past Performance is not necessarily indicative of future results.