



Tony Rago's Pre-Market Playbook

★ Overnight Range

- ES 83.25
- NQ 431.25
- VIX 22.92 **HIGH VOLATILITY**

★ **Bulls** need to hold above yest closes **6814 and 24709-- long above these**

★ Breakouts are above yesterday's highs **6886 and 25011- aggressive longs** (await for confirmation with a new high and a retest of the highs from above that holds)

★ **Bears** need under overnight lows **short under 6773 and 24499**

★ Breakdown is below yest lows **6718 and 24352 -- aggressive shorts** (wait for

★ confirmation with a new low and a retest of the lows from below that hold)

★ **RANGEBOUND: 2 Way trade long and shorts will work** to get the day done

★ Keep it simple and be patient for confirmation on either side or establish the range if

★ we are going to be rangebound

★ Confirm rally continuation with sustained trade over the 30min IB High and likewise

★ bearish under the IB Low

ECON:

- 8:15 am ADP employment
- 9:45 am S&P final U.S. services PMI
- 10:00 am ISM services
- 2:00 pm Fed Beige Book

Pre-Market Trading Levels for today

GLOBEX

NQ

★ **HIGH:** 24930.25

★ **LOW:** 24499.00

★ **Bull Case** defend the 24333 to seek the 24412, 24500, 24612, 24633, 24750, 24812, 248333, 24912, 25000, 25106, 25250, 25312, 25333, 25412

★ **Bear Case** seal the 25000 to seek the 24912, 24833, 24750, 24633, 24612, 24500, 24412, 24333, 24312

★ **Overnight Range - 431.25**

NQ (Prev. Day)

★ High 25011.00

★ Low 24352.00

★ Close 24709.75

NQ (Week Open) 24682.50

S&P 500

★ **HIGH** - 6856.75

★ **LOW** - 6773.50

★ **Bull Case:** defend the 6750 to seek the 6762, 6777, 6788, 6800, 6812, 6817, 6826, 6833, 6842, 6850

★ **Bear Case:** seal the 6862 to seek the 6850, 6842, 6833, 6826, 6817, 6812, 6800, 6788, 6777, 6762, 6750, 6733, 6726, 6717, 6700

★ **Overnight Range** - 83.25

ES (Prev Day)

★ High 6886.00

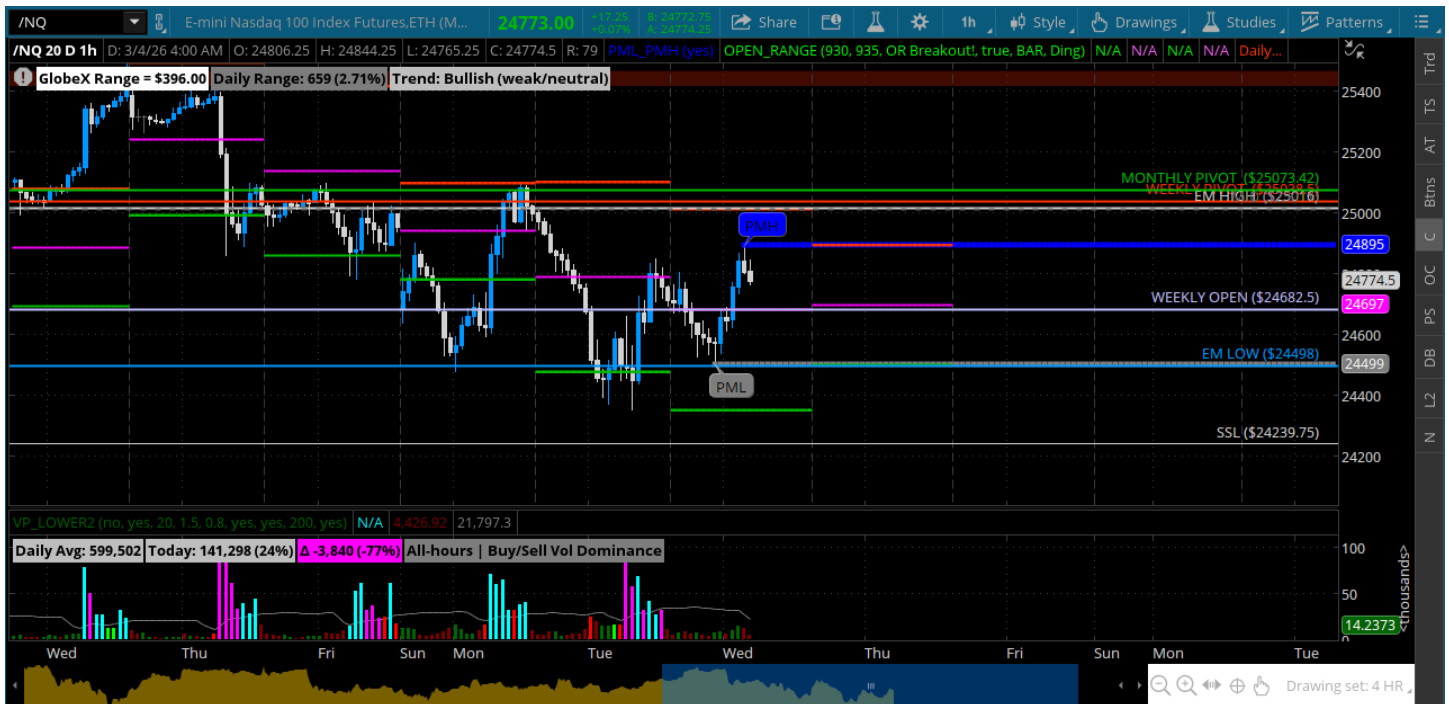
★ Low 6718.75

★ Close 6814.00

ES (Week Open) 6820.00

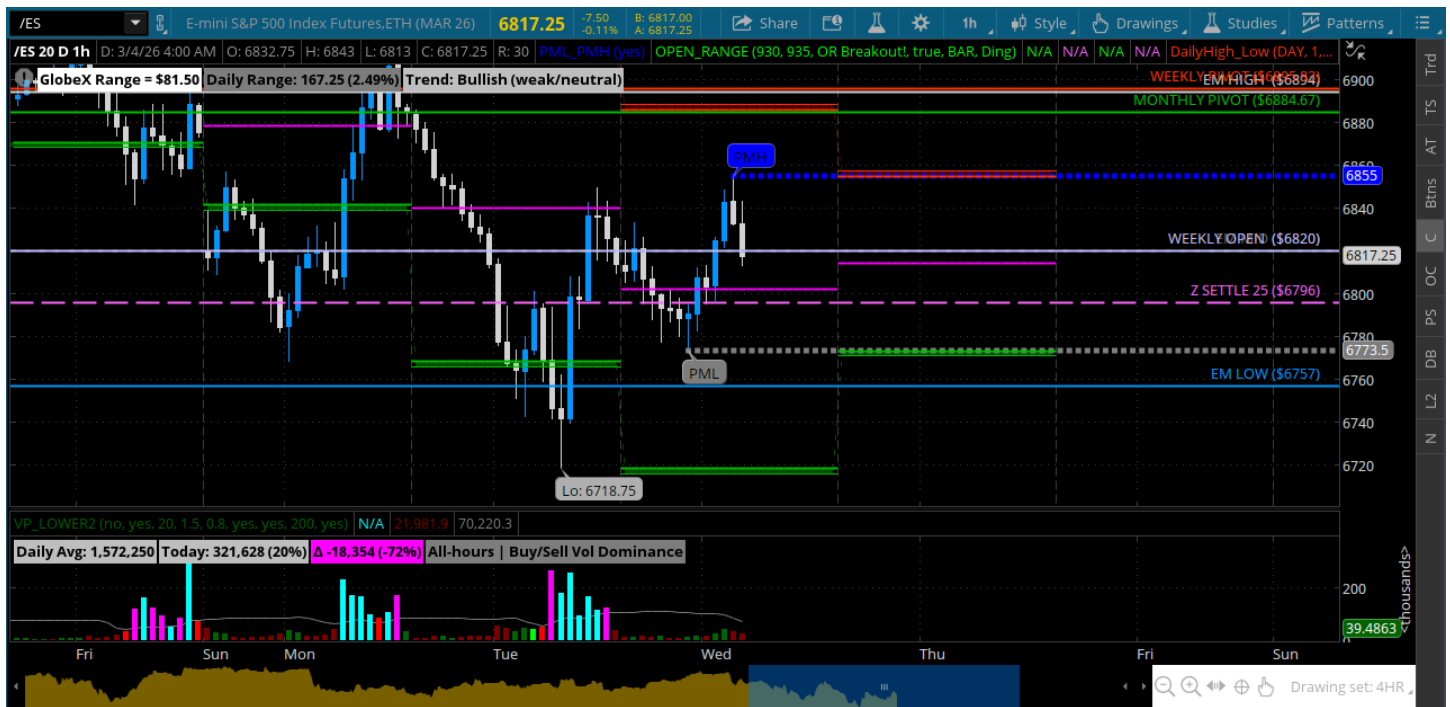
Pre-Market Charts to Watch

Wednesday, March 4, 2026 Pre-Market /NQ 1 Hour Chart



- Bulls keep stick saving the lows but can hold the rallies
- VIX is still elevated and price cant hold above 25k
- Will be watching how we trade around the weekly open again today
- Bulls need to hold that and rally to the 25000
- Under it will seek the 24500 again

Tuesday, March 3, 2026 Pre-Market /ES 1 Hour Chart



- Price still struggling to convert the 6850 to support and get back to the 6900
- All about the 6796 and 6800 today
- Will be focused on how we open and deal with the weekly open 6820
- Above that should get back to 6850

Disclaimer:

Disclaimer: Neither TheoTrade or any of its officers, directors, employees, other personnel, representatives, agents or independent contractors is, in such capacities, a licensed financial adviser, registered investment adviser, registered broker-dealer or FINRA|SIPC|NFA-member firm. TheoTrade does not provide investment or financial advice or make investment recommendations. TheoTrade is not in the business of transacting trades, nor does TheoTrade agree to direct your brokerage accounts or give trading advice tailored to your particular situation. Nothing contained in our content constitutes a solicitation, recommendation, promotion, or endorsement of any particular security, other investment product, transaction or investment. Trading Futures, Options on Futures, and retail off-exchange foreign currency transactions involves substantial risk of loss and is not suitable for all investors. You should carefully consider whether trading is suitable for you in light of your circumstances, knowledge, and financial resources. You may lose all or more of your initial investment. Opinions, market data, and recommendations are subject to change at any time. Past Performance is not necessarily indicative of future results.