



Tony Rago's Pre-Market Playbook

★ Overnight Range

- ES 60.25
- NQ 276.75
- VIX 22.00 **HIGH VOLATILITY**

★ **Bulls** need to hold above yest closes **6879 and 25138-- long above these**

★ Breakouts are above yesterday's highs **6894 and 25217- aggressive longs** (await for confirmation with a new high and a retest of the highs from above that holds)

★ **Bears** need under overnight lows **short under 6840 and 24973**

★ Breakdown is below yest lows **6773 and 24499 -- aggressive shorts** (wait for

★ confirmation with a new low and a retest of the lows from below that hold)

★ **RANGEBOUND: 2 Way trade long and shorts will work** to get the day done

★ Keep it simple and be patient for confirmation on either side or establish the range if

★ we are going to be rangebound

★ Confirm rally continuation with sustained trade over the 30min IB High and likewise

★ bearish under the IB Low

ECON:

- 8:30 am Initial jobless claims
- 8:30 am U.S. productivity
- 8:30 am Import price index
- 1:15 pm Fed Vice Chair for Supervision Michelle Bowman speaks

Pre-Market Trading Levels for today

GLOBEX

NQ

★ **HIGH:** 25250.00

★ **LOW:** 24973.25

★ **Bull Case** defend the 24833 to seek the 24912, 25000, 25106, 25250, 25312, 25333, 25412, 25500, 25612

★ **Bear Case** seal the 25333 to seek the 25312, 25250, 25106, 25000, 24912, 24833, 24750, 24633, 24612, 24500, 24412, 24333, 24312

★ **Overnight Range - 276.75**

NQ (Prev. Day)

★ High 25217.75

★ Low 24499.00

★ Close 25138.00

NQ (Week Open) 24682.50

S&P 500

★ **HIGH** - 6900.75

★ **LOW** - 6840.50

★ **Bull Case:** defend the 6800 to seek the 6812, 6817, 6826, 6833, 6842, 6850, 6862, 6877, 6888, 6900, 6912, 6917, 6926

★ **Bear Case:** seal the 6912 to seek the 6900, 6888, 6877, 6862, 6850, 6842, 6833, 6826, 6817, 6812, 6800, 6788, 6777, 6762, 6750, 6733, 6726, 6717, 6700

★ **Overnight Range** - 60.25

ES (Prev Day)

★ High 6894.00

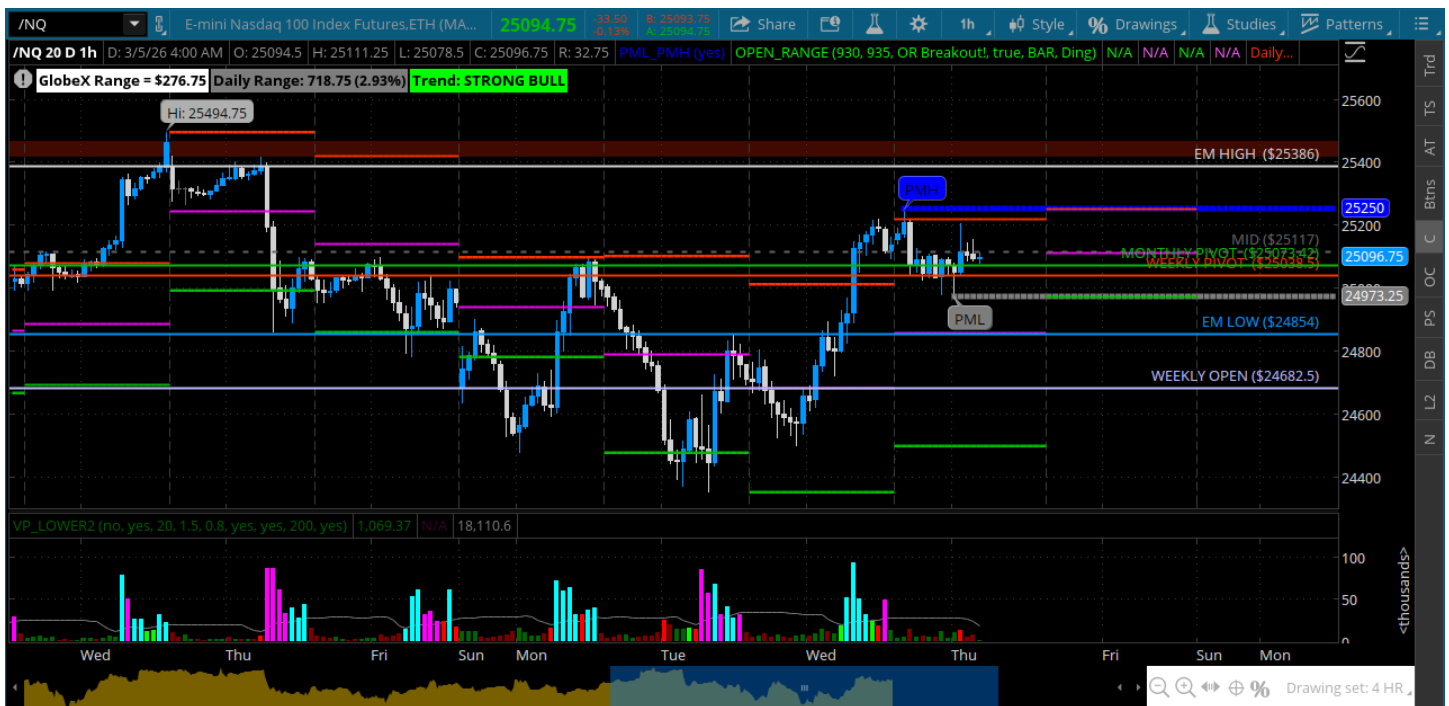
★ Low 6773.50

★ Close 6879.00

ES (Week Open) 6820.00

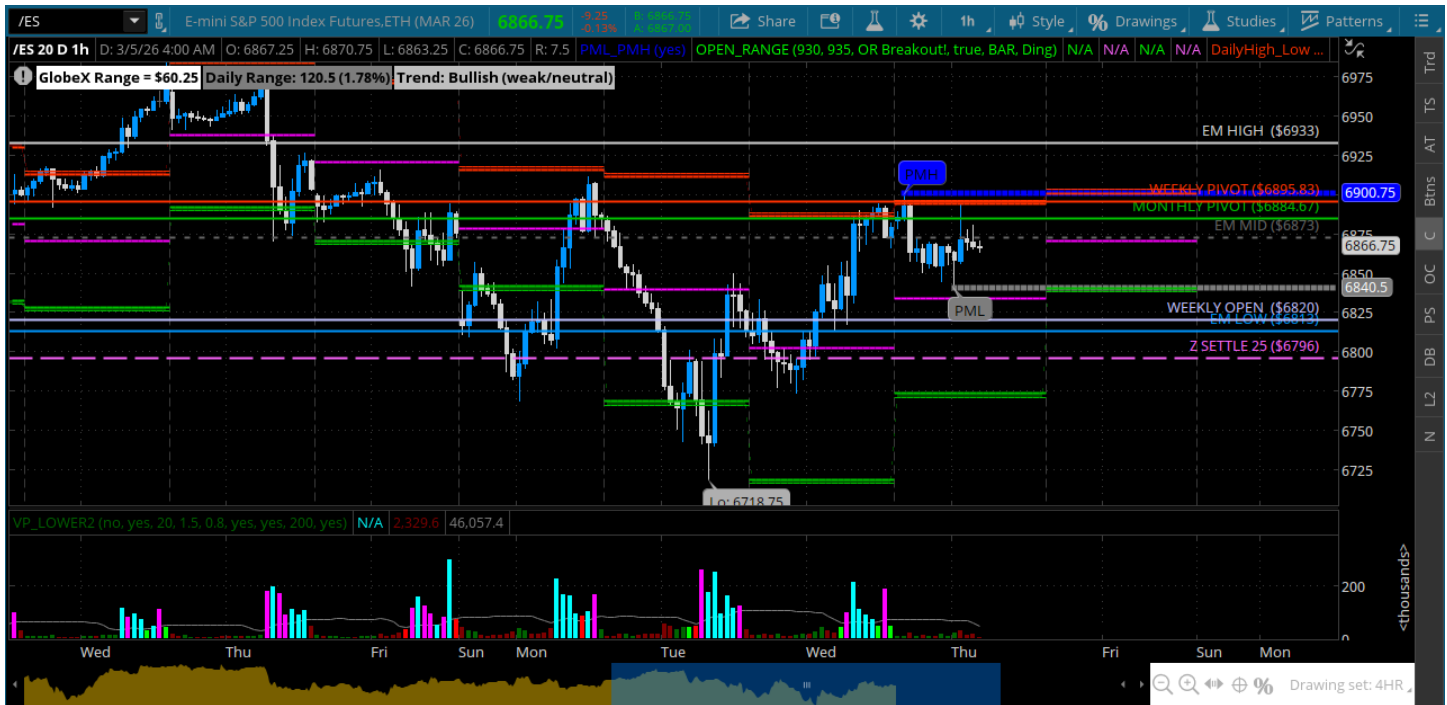
Pre-Market Charts to Watch

Thursday, March 5, 2026 Pre-Market /NQ 1 Hour Chart



- Bulls get it done – rally and close near highs
- Now they need to hold the line and defend pullbacks to the 24833/24812
- Bears take the ball under the 24750 and weekly open
- Will be watching how we deal with the 25000 - would like to see a test of the 24912 hold and back thru 25000

Thursday, March 5, 2026 Pre-Market /ES 1 Hour Chart



- Bulls rally us back to the 6900 and weekly pivot and price backs off
- Bulls need to hold the 6833 on a test and move back to the 6900
- Will be watching the 6842 on a test for bulls to hold and get back thru 6850

Disclaimer:

Disclaimer: Neither TheoTrade or any of its officers, directors, employees, other personnel, representatives, agents or independent contractors is, in such capacities, a licensed financial adviser, registered investment adviser, registered broker-dealer or FINRA|SIPC|NFA-member firm. TheoTrade does not provide investment or financial advice or make investment recommendations. TheoTrade is not in the business of transacting trades, nor does TheoTrade agree to direct your brokerage accounts or give trading advice tailored to your particular situation. Nothing contained in our content constitutes a solicitation, recommendation, promotion, or endorsement of any particular security, other investment product, transaction or investment. Trading Futures, Options on Futures, and retail off-exchange foreign currency transactions involves substantial risk of loss and is not suitable for all investors. You should carefully consider whether trading is suitable for you in light of your circumstances, knowledge, and financial resources. You may lose all or more of your initial investment. Opinions, market data, and recommendations are subject to change at any time. Past Performance is not necessarily indicative of future results.