



## *Tony Rago's Pre-Market Playbook*

---

### ★ Overnight Range

- ES 64.75
- NQ 306.50
- VIX 26.45 **HIGH VOLATILITY**

★ **Bulls** need to hold above yest closes **6824 and 25010-- long above these**

★ Breakouts are above yesterday's highs **6900 and 25250- aggressive longs** (await for confirmation with a new high and a retest of the highs from above that holds)

★ **Bears** need under overnight lows **short under 6789 and 24835**

★ Breakdown is below yest lows **6777 and 24772 -- aggressive shorts** (wait for

★ confirmation with a new low and a retest of the lows from below that hold)

★ **RANGEBOUND: 2 Way trade long and shorts will work** to get the day done

★ Keep it simple and be patient for confirmation on either side or establish the range if

★ we are going to be rangebound

★ Confirm rally continuation with sustained trade over the 30min IB High and likewise

★ bearish under the IB Low

### ECON:

- 8:30 am U.S. employment report
- 8:30 am Hourly wages year over year
- 8:30 am U.S. retail sales
- 10:00 am Business inventories
- 10:15 am San Francisco Fed President Mary Daly speaks
- 1:30 pm Cleveland Fed President Beth Hammack speaks
- 3:00 pm Consumer credit

## *Pre-Market Trading Levels for today*

---

### GLOBEX

#### NQ

★ **HIGH:** 25141.50

★ **LOW:** 24735.00

★ **Bull Case** defend the 24750 to seek the 24812, 24833, 24912, 25000, 25106, 25250, 25312, 25333, 25412, 25500, 25612

★ **Bear Case** seal the 25250 to seek the 25106, 25000, 24912, 24833, 24750, 24633, 24612, 24500, 24412, 24333, 24312

★ **Overnight Range - 406.50**

#### NQ (Prev. Day)

★ High 25250.00

★ Low 24772.00

★ Close 25010.00

**NQ (Week Open) 24682.50**

## S&P 500

★ **HIGH** - 6900.75

★ **LOW** - 6765.25

★ **Bull Case:** defend the 6777 to seek the 6788, 6800, 6812, 6817, 6826, 6833, 6842, 6850, 6862, 6877, 6888, 6900, 6912, 6917, 6926

★ **Bear Case:** seal the 6877 to seek the 6862, 6850, 6842, 6833, 6826, 6817, 6812, 6800, 6788, 6777, 6762, 6750, 6733, 6726, 6717, 6700

★ **Overnight Range** - 88.75

### ES (Prev Day)

★ High 6900.756

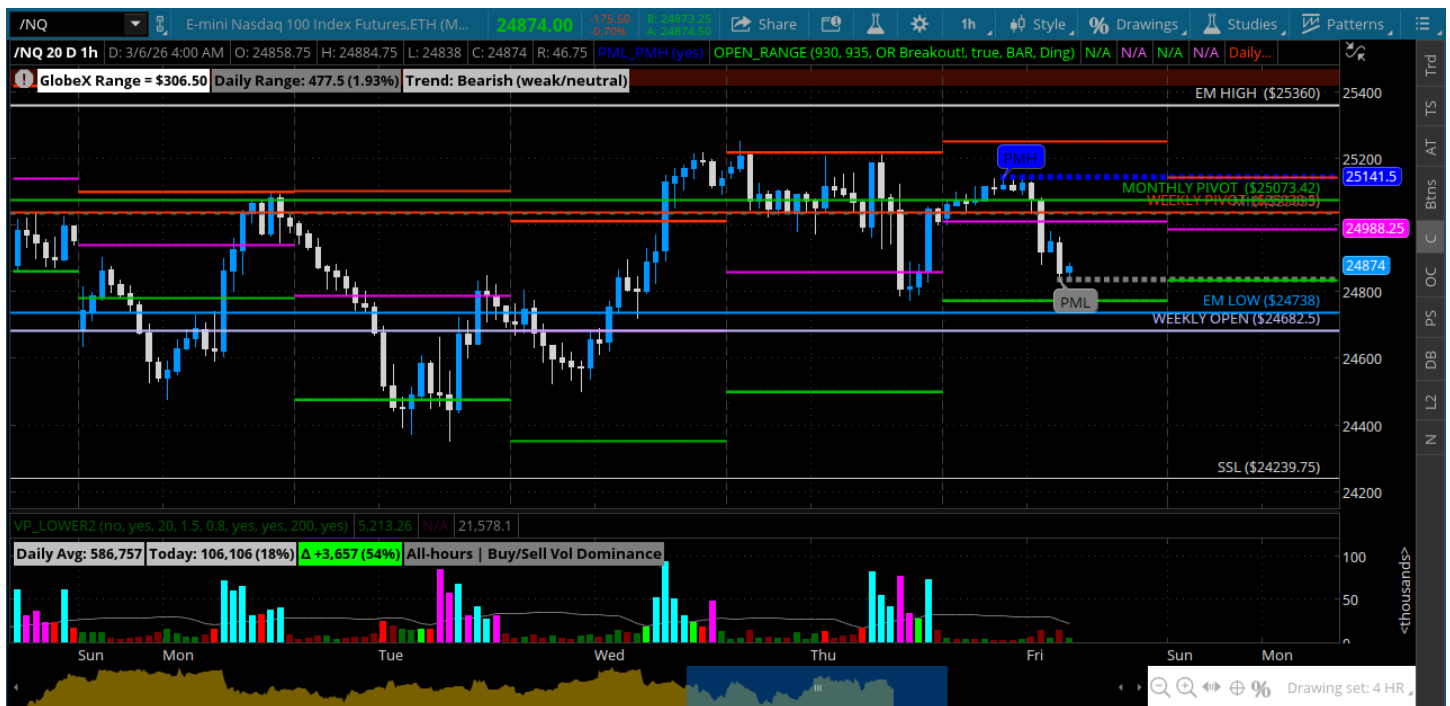
★ Low 6777.00

★ Close 6824.75

**ES (Week Open) 6820.00**

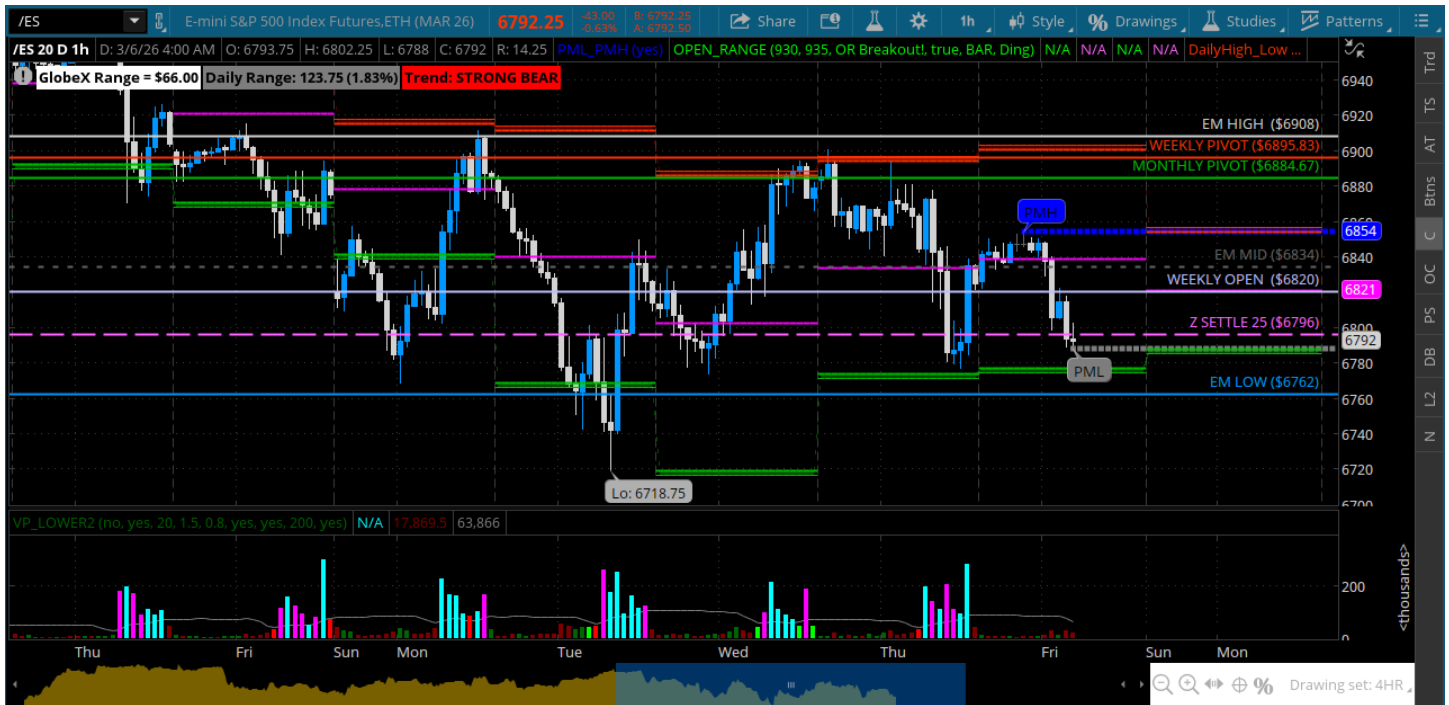
## Pre-Market Charts to Watch

Friday, March 6, 2026 Pre-Market /NQ 1 Hour Chart



- Very volatile day with lots of headline risk – the moves are big
- VIX over 25 means more vol today – be careful if you are trading
- Will be focused on how we deal with the 24750 and the weekly open
- Weekly pivot and 25k is resistance pre-open

## Friday, March 6, 2026 Pre-Market /ES 1 Hour Chart



- Almost an outside day but again bulls could not hold the line and we slip back into the big zone
- Expecting more vol today
- Will be watching how we trade around the 6796 and 6800
- Be careful and use stops if you are trading

*Disclaimer:*

Disclaimer: Neither TheoTrade or any of its officers, directors, employees, other personnel, representatives, agents or independent contractors is, in such capacities, a licensed financial adviser, registered investment adviser, registered broker-dealer or FINRA|SIPC|NFA-member firm. TheoTrade does not provide investment or financial advice or make investment recommendations. TheoTrade is not in the business of transacting trades, nor does TheoTrade agree to direct your brokerage accounts or give trading advice tailored to your particular situation. Nothing contained in our content constitutes a solicitation, recommendation, promotion, or endorsement of any particular security, other investment product, transaction or investment. Trading Futures, Options on Futures, and retail off-exchange foreign currency transactions involves substantial risk of loss and is not suitable for all investors. You should carefully consider whether trading is suitable for you in light of your circumstances, knowledge, and financial resources. You may lose all or more of your initial investment. Opinions, market data, and recommendations are subject to change at any time. Past Performance is not necessarily indicative of future results.