



Tony Rago's Pre-Market Playbook

- ★ ES WEEKLY PIVOT 6789.00
- ★ NQ WEEKLY PIVOT 24754.42
- ★ Overnight Range
 - ES 117.00
 - NQ 495.75
 - VIX 31.06 **HIGH VOLATILITY**
- ★ **Bulls** need to hold above yest closes **6740 and 24661-- long above these**
- ★ Breakouts are above yesterday's highs **6584 and 25141- aggressive longs** (await for confirmation with a new high and a retest of the highs from above that holds)
- ★ **Bears** need under overnight lows **short under 6584 and 24000**
- ★ Breakdown is below yest lows **6715 and 24601 -- aggressive shorts** (wait for confirmation with a new low and a retest of the lows from below that hold)
- ★ **RANGEBOUND: 2 Way trade long and shorts will work** to get the day done
- ★ Keep it simple and be patient for confirmation on either side or establish the range if we are going to be rangebound
- ★ Confirm rally continuation with sustained trade over the 30min IB High and likewise
- ★ bearish under the IB Low

ECON:

- n/a

Pre-Market Trading Levels for today

GLOBEX

NQ

★ **HIGH:** 24495.75

★ **LOW:** 24000.00

★ **Bull Case** defend the 24250 to seek the 24312, 24333, 24412, 24500, 24612, 24633, 24750, 24812, 24833, 24912, 25000, 25106

★ **Bear Case** seal the 24750 to seek the 24633, 24612, 24500, 24412, 24333, 24312, 24250, 24106, 24000, 23912

★ **Overnight Range - 495.75**

NQ (Prev. Day)

★ High 25141.50

★ Low 24601.00

★ Close 24661.25

NQ (Week Open) 24435.25

S&P 500

★ **HIGH** - 6701.50

★ **LOW** - 6584.50

★ **Bull Case:** defend the 6650 to seek the 6662, 6677, 6688, 6700, 6712, 6717, 6726, 6733, 6742, 6750, 6762, 6777, 6788, 6800, 6812, 6817, 6826

★ **Bear Case:** seal the 6733 to seek the 6726, 6717, 6712, 6700, 6688, 6677, 6662, 6650, 6633, 6626, 6617, 6600

★ **Overnight Range** - 117.00

ES (Prev Day)

★ High 6854.00

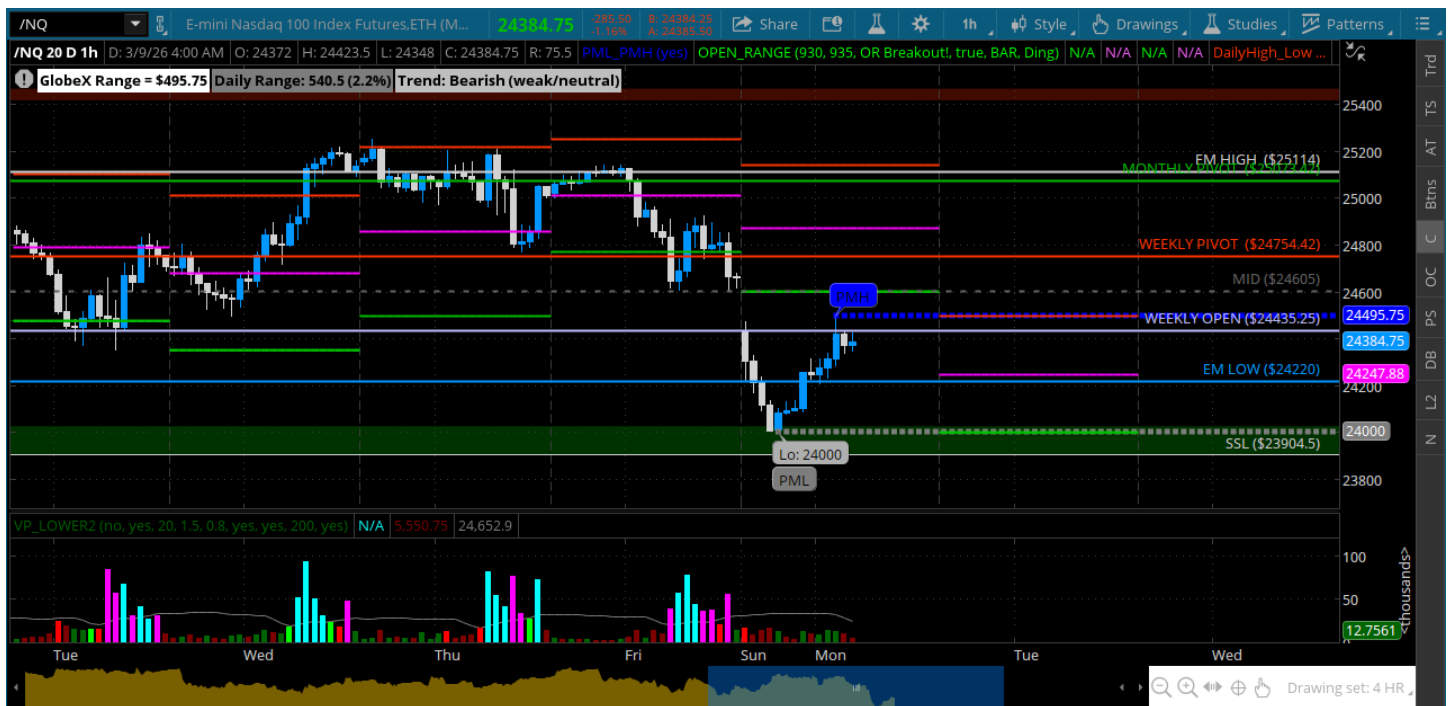
★ Low 6715.75

★ Close 6740.00

ES (Week Open) 6685.50

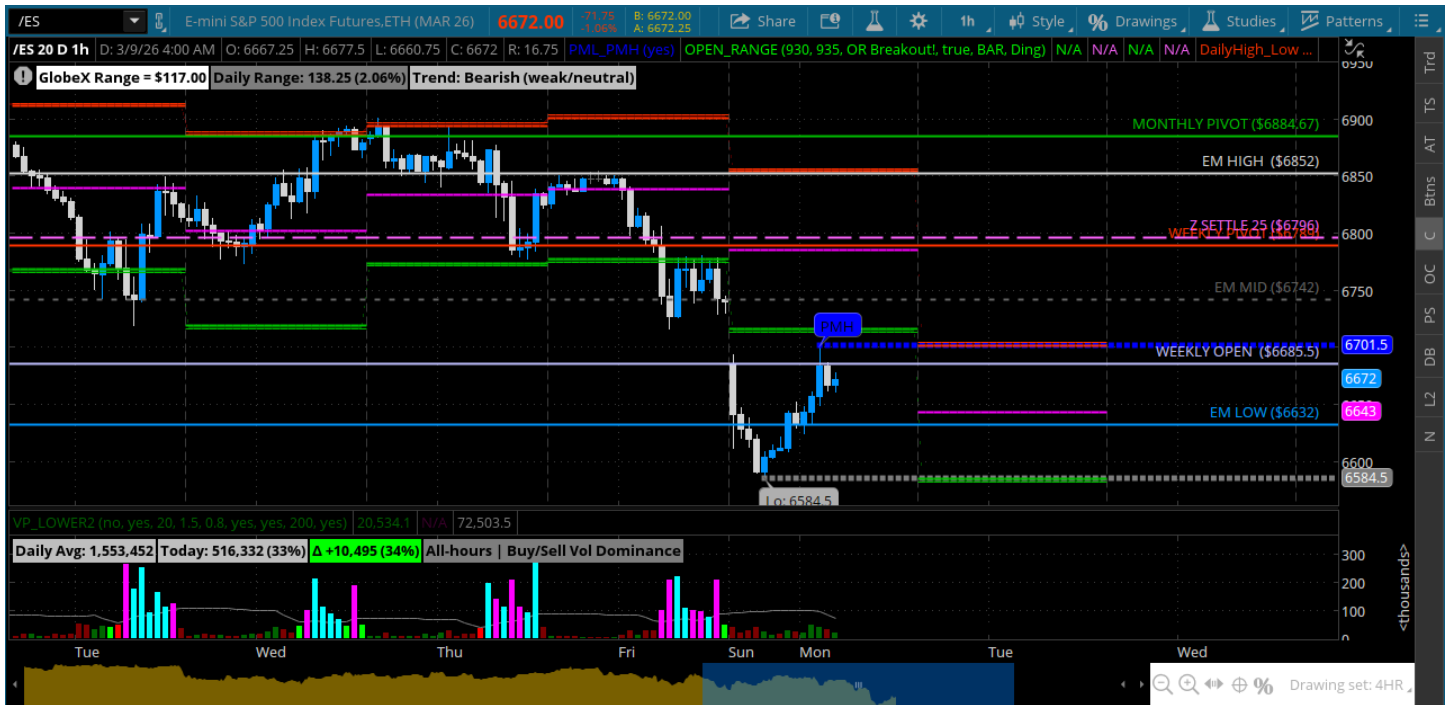
Pre-Market Charts to Watch

Monday, March 9, 2026 Pre-Market /NQ 1 Hour Chart



- Big gap down and into the big support area at 24000
- Price lifted +400 off the lows coming into the open
- Gap fill is 24618
- Expect a lot of volatility today with headline risk

Monday, March 9, 2026 Pre-Market /ES 1 Hour Chart



- Big gap down under the 6700 and breached the 6600
- Price has lifted almost +100 off the lows
- Gap fill is 6730
- Fridays day low is 6715 bulls need to reclaim that and move to the 6750/6762

Disclaimer:

Disclaimer: Neither TheoTrade or any of its officers, directors, employees, other personnel, representatives, agents or independent contractors is, in such capacities, a licensed financial adviser, registered investment adviser, registered broker-dealer or FINRA|SIPC|NFA-member firm. TheoTrade does not provide investment or financial advice or make investment recommendations. TheoTrade is not in the business of transacting trades, nor does TheoTrade agree to direct your brokerage accounts or give trading advice tailored to your particular situation. Nothing contained in our content constitutes a solicitation, recommendation, promotion, or endorsement of any particular security, other investment product, transaction or investment. Trading Futures, Options on Futures, and retail off-exchange foreign currency transactions involves substantial risk of loss and is not suitable for all investors. You should carefully consider whether trading is suitable for you in light of your circumstances, knowledge, and financial resources. You may lose all or more of your initial investment. Opinions, market data, and recommendations are subject to change at any time. Past Performance is not necessarily indicative of future results.