



## *Tony Rago's Pre-Market Playbook*

---

### ★ Overnight Range

- ES 63.75
- NQ 253.75
- VIX 25.84

★ **Bulls** need to hold above yest closes **6769 and 24945-- long above these**

★ Breakouts are above yesterday's highs **6822 and 25180- aggressive longs** (await for confirmation with a new high and a retest of the highs from above that holds)

★ **Bears** need under overnight lows **short under 6705 and 24695**

★ Breakdown is below yest lows **6749 and 24873 -- aggressive shorts** (wait for

★ confirmation with a new low and a retest of the lows from below that hold)

★ **RANGEBOUND: 2 Way trade long and shorts will work** to get the day done

★ Keep it simple and be patient for confirmation on either side or establish the range if

★ we are going to be rangebound

★ Confirm rally continuation with sustained trade over the 30min IB High and likewise

★ bearish under the IB Low

### ECON:

- 8:30 am Initial jobless claims
- 8:30 am U.S. trade deficit
- 8:30 am Housing starts
- 8:30 am Building permits
- 11:00 am Federal Reserve Vice Chair for Supervision Michelle Bowman

## *Pre-Market Trading Levels for today*

---

### GLOBEX

#### NQ

★ **HIGH:** 24949.25

★ **LOW:** 24695.50

★ **Bull Case** defend the 24750 to seek the 24812, 24833, 24912, 25000, 25106, 25250, 25312, 25333, 25412, 25500

★ **Bear Case** seal the 25250 to seek the 25106, 25000, 24912, 24833, 24812, 24750, 24633, 24612, 24500, 24412, 24333, 24312, 24250, 24106, 24000, 23912

★ **Overnight Range - 253.75**

#### NQ (Prev. Day)

★ High 25180.00

★ Low 24873.50

★ Close 24945.50

**NQ (Week Open) 24435.25**

## S&P 500

★ **HIGH** - 6769.50

★ **LOW** - 6705.75

★ **Bull Case:** defend the 6717 to seek the 6726, 6733, 6742, 6750, 6762, 6777, 6788, 6800, 6812, 6817, 6826, 6833, 6850

★ **Bear Case:** seal the 6833 to seek the 6826, 6817, 6812, 6800, 6788, 6777, 6762, 6750, 6733, 6726, 6717, 6700

★ **Overnight Range** - 63.75

### ES (Prev Day)

★ High 6822.50

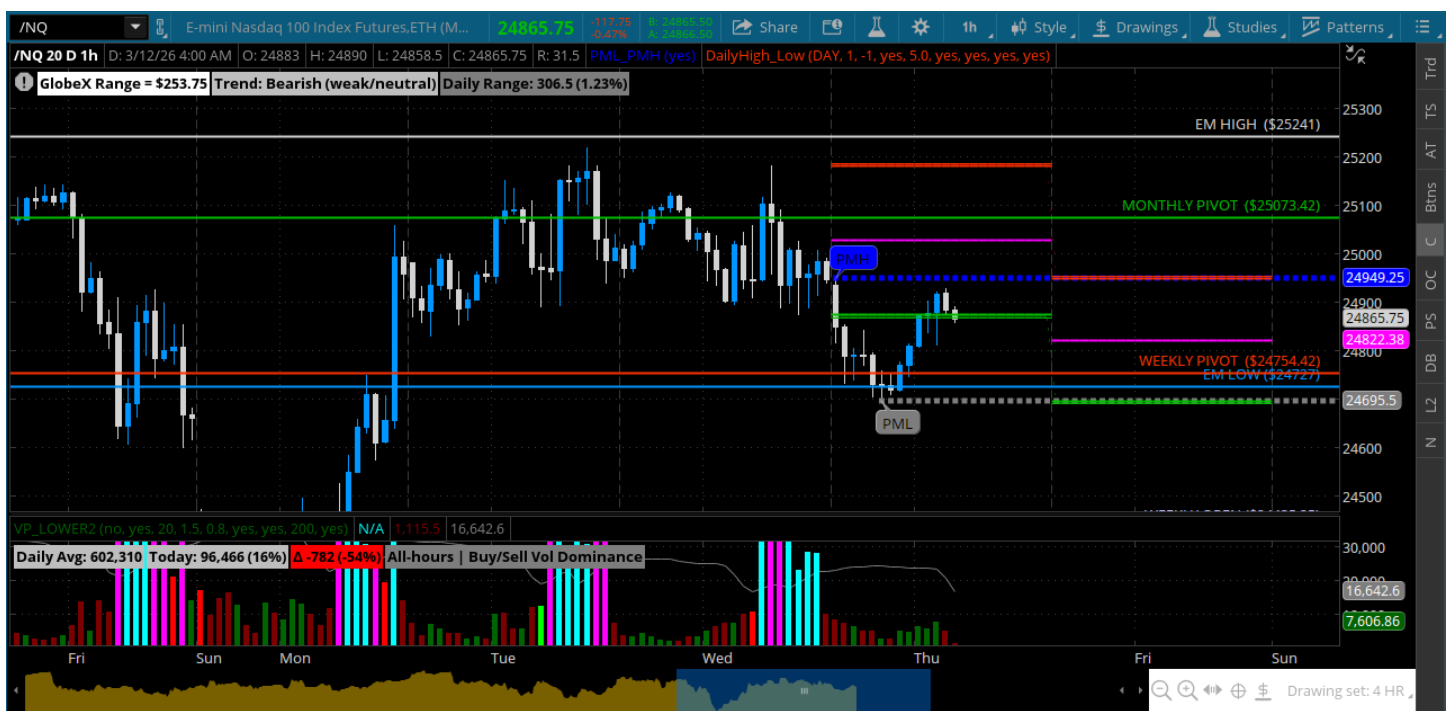
★ Low 6749.75

★ Close 6769.75

**ES (Week Open) 6685.50**

## Pre-Market Charts to Watch

### Thursday, March 12, 2026 Pre-Market /NQ 1 Hour Chart



- Crude keeps rippin to the upside and affecting everything
- Big push down at the open overnight and futures slow to recover
- Keep an eye on crude throughout the day
- Bulls need to hold the line here above weekly pivot
- Under it targets the 24500 quickly

## Thursday, March 12, 2026 Pre-Market /ES 1 Hour Chart



- Bulls need to defend the 6726 and 6733 at the open and get back to above the 6762
- Price above the 6800 can breakout but feels like its all about crude so we need that to relax to rally
- Bears can move back to the weekly open if they seal off the 6762

*Disclaimer:*

Disclaimer: Neither TheoTrade or any of its officers, directors, employees, other personnel, representatives, agents or independent contractors is, in such capacities, a licensed financial adviser, registered investment adviser, registered broker-dealer or FINRA|SIPC|NFA-member firm. TheoTrade does not provide investment or financial advice or make investment recommendations. TheoTrade is not in the business of transacting trades, nor does TheoTrade agree to direct your brokerage accounts or give trading advice tailored to your particular situation. Nothing contained in our content constitutes a solicitation, recommendation, promotion, or endorsement of any particular security, other investment product, transaction or investment. Trading Futures, Options on Futures, and retail off-exchange foreign currency transactions involves substantial risk of loss and is not suitable for all investors. You should carefully consider whether trading is suitable for you in light of your circumstances, knowledge, and financial resources. You may lose all or more of your initial investment. Opinions, market data, and recommendations are subject to change at any time. Past Performance is not necessarily indicative of future results.