



Tony Rago's Pre-Market Playbook

★ Overnight Range

- ES 85.25
- NQ 341.00
- VIX 26.13

★ **Bulls** need to hold above yest closes **6685 and 24568-- long above these**

★ Breakouts are above yesterday's highs **6769 and 24949- aggressive longs** (await for confirmation with a new high and a retest of the highs from above that holds)

★ **Bears** need under overnight lows **short under 6640 and 24397**

★ Breakdown is below yest lows **6671 and 24517 -- aggressive shorts** (wait for

★ confirmation with a new low and a retest of the lows from below that hold)

★ **RANGEBOUND: 2 Way trade long and shorts will work** to get the day done

★ Keep it simple and be patient for confirmation on either side or establish the range if

★ we are going to be rangebound

★ Confirm rally continuation with sustained trade over the 30min IB High and likewise

★ bearish under the IB Low

ECON:

- 8:30 am GDP
- 8:30 am PCE index
- 8:30 am Durable-goods orders
- 8:30 am Durable-goods minus transportation
- 10:00 am Job openings
- 10:00 am Consumer sentiment (prelim)

Pre-Market Trading Levels for today

GLOBEX

NQ

★ **HIGH:** 24738.00

★ **LOW:** 24397.00

★ **Bull Case** defend the 24500 to seek the 24612, 24633, 24750, 24812, 24833, 24912, 25000, 25106, 25250, 25312, 25333, 25412, 25500

★ **Bear Case** seal the 24912 to seek the 24833, 24812, 24750, 24633, 24612, 24500, 24412, 24333, 24312, 24250, 24106, 24000, 23912

★ **Overnight Range - 341.00**

NQ (Prev. Day)

★ High 24949.25

★ Low 24517.75

★ Close 24568.50

NQ (Week Open) 24435.25

S&P 500

★ **HIGH** - 6725.25

★ **LOW** - 6640.00

★ **Bull Case:** defend the 6650 to seek the 6662, 6677, 6688, 6700, 6712, 6717, 6726, 6733, 6742, 6750, 6762, 6777, 6788, 6800, 6812, 6817, 6826, 6833, 6850

★ **Bear Case:** seal the 6733 to seek the 6726, 6717, 6712, 6700, 6688, 6677, 6662, 6650, 6633, 6626, 6617, 6600

★ **Overnight Range** - 85.25

ES (Prev Day)

★ High 6769.50

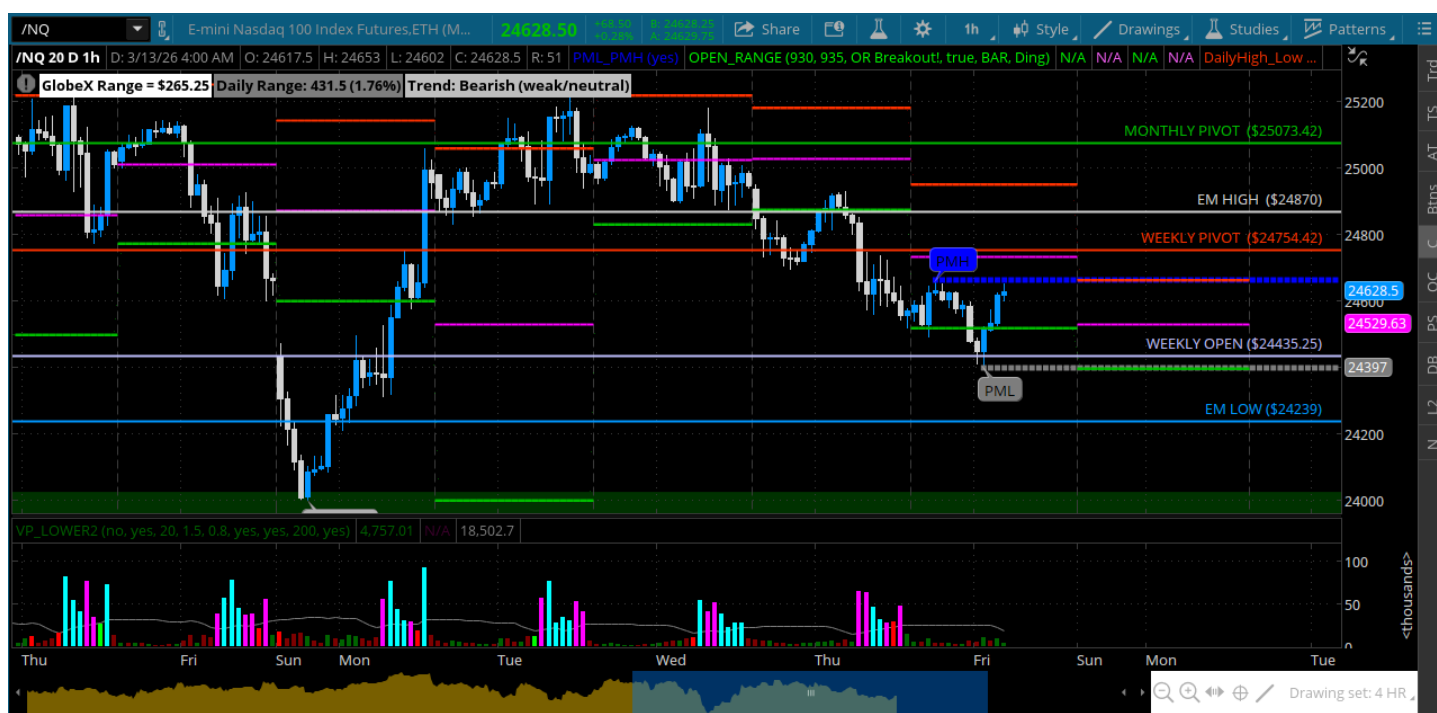
★ Low 6671.75

★ Close 6685.25

ES (Week Open) 6685.50

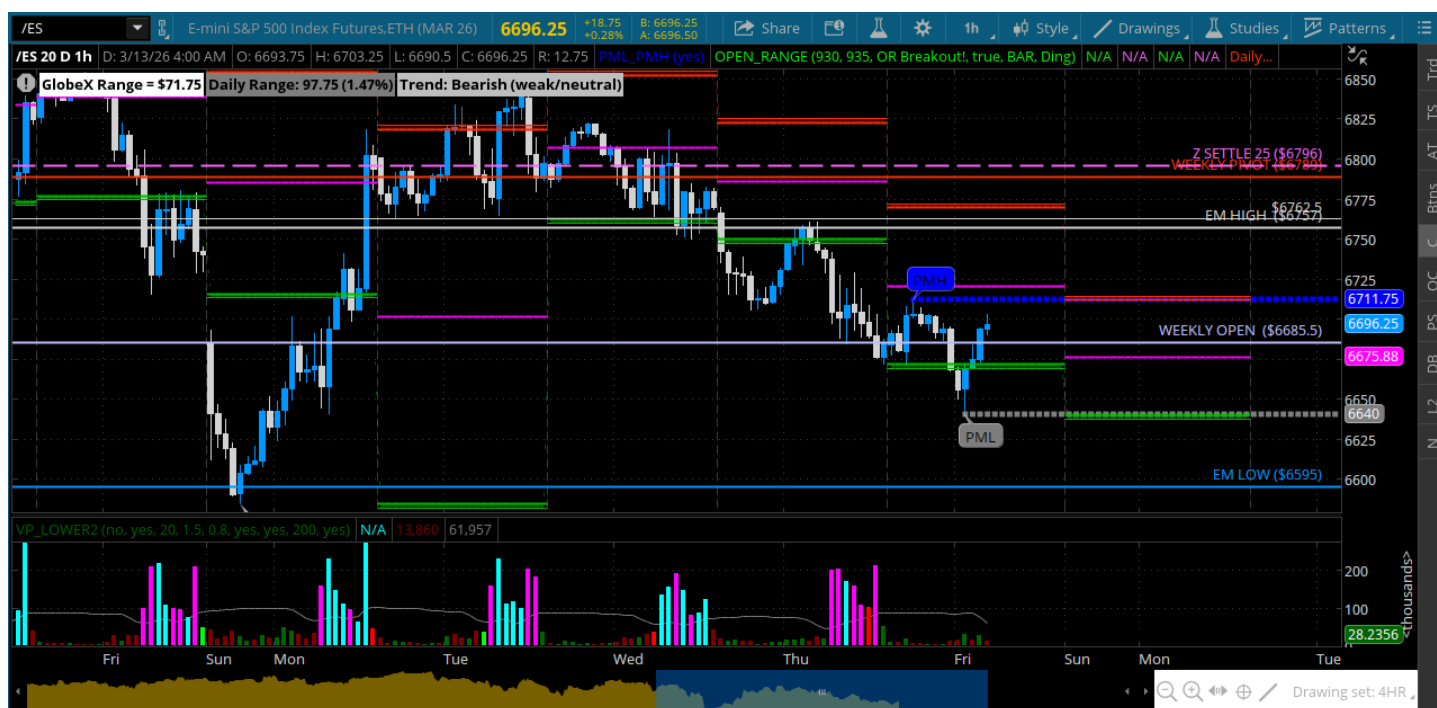
Pre-Market Charts to Watch

Friday, March 13, 2026 Pre-Market /NQ 1 Hour Chart



- Bulls could hold price above weekly pivot and we dipped back to the weekly open
- Will be focused on how we deal with 24633 - we can break out above that
- If 24633 is resistance I will look for a retest of overnight lows
- Keep an eye on Crude

Friday, March 1, 2026 Pre-Market /ES 1 Hour Chart



- Bulls gave it up – no traction and back down under the 6750
- Will be focused on how we deal with the weekly open level 6685
- If bulls can defend it and hold price above 6700 Im looking for a retest of 6742/50
- Under weekly open gets very slippery to the down side and will target the 6633

Disclaimer:

Disclaimer: Neither TheoTrade or any of its officers, directors, employees, other personnel, representatives, agents or independent contractors is, in such capacities, a licensed financial adviser, registered investment adviser, registered broker-dealer or FINRA|SIPC|NFA-member firm. TheoTrade does not provide investment or financial advice or make investment recommendations. TheoTrade is not in the business of transacting trades, nor does TheoTrade agree to direct your brokerage accounts or give trading advice tailored to your particular situation. Nothing contained in our content constitutes a solicitation, recommendation, promotion, or endorsement of any particular security, other investment product, transaction or investment. Trading Futures, Options on Futures, and retail off-exchange foreign currency transactions involves substantial risk of loss and is not suitable for all investors. You should carefully consider whether trading is suitable for you in light of your circumstances, knowledge, and financial resources. You may lose all or more of your initial investment. Opinions, market data, and recommendations are subject to change at any time. Past Performance is not necessarily indicative of future results.