



## *Tony Rago's Pre-Market Playbook*

- ★ **ES WEEKLY PIVOT 6736.50**
- ★ **NQ WEEKLY PIVOT 24729.92**
- ★ **Overnight Range**
  - **ES 96.25**
  - **NQ 407.25**
  - **VIX 25.45**
  - **Trading the M Contract starting today**
- ★ **Bulls** need to hold above yest closes **6625 and 24335-- long above these**
- ★ Breakouts are above yesterday's highs **6737 and 24805- aggressive longs** (await for confirmation with a new high and a retest of the highs from above that holds)
- ★ **Bears** need under overnight lows **short under 6656 and 24491**
- ★ Breakdown is below yest lows **6625 and 24333 -- aggressive shorts** (wait for confirmation with a new low and a retest of the lows from below that hold)
- ★ **RANGEBOUND: 2 Way trade long and shorts will work** to get the day done
- ★ Keep it simple and be patient for confirmation on either side or establish the range if we are going to be rangebound
- ★ Confirm rally continuation with sustained trade over the 30min IB High and likewise
- ★ bearish under the IB Low

### **ECON:**

- 8:30 am Empire State manufacturing survey
- 9:15 am Industrial production
- 9:15 am Capacity utilization

## *Pre-Market Trading Levels for today*

---

### GLOBEX

#### NQ

★ **HIGH:** 24898.75

★ **LOW:** 24491.50

★ **Bull Case** defend the 24500 to seek the 24612, 24633, 24750, 24812, 24833, 24912, 25000, 25106, 25250, 25312, 25333, 25412, 25500

★ **Bear Case** seal the 24912 to seek the 24833, 24812, 24750, 24633, 24612, 24500, 24412, 24333, 24312, 24250, 24106, 24000, 23912

★ **Overnight Range - 407.25**

#### NQ (Prev. Day)

★ High 24805.25

★ Low 24333.75

★ Close 24335.25

**NQ (Week Open) 24500.00**

## S&P 500

★ **HIGH** - 6736.50

★ **LOW** - 6656.00

★ **Bull Case:** defend the 6650 to seek the 6662, 6677, 6688, 6700, 6712, 6717, 6726, 6733, 6742, 6750, 6762, 6777, 6788, 6800, 6812, 6817, 6826, 6833, 6850

★ **Bear Case:** seal the 6733 to seek the 6726, 6717, 6712, 6700, 6688, 6677, 6662, 6650, 6633, 6626, 6617, 6600

★ **Overnight Range** - 96.25

### ES (Prev Day)

★ High 6737.50

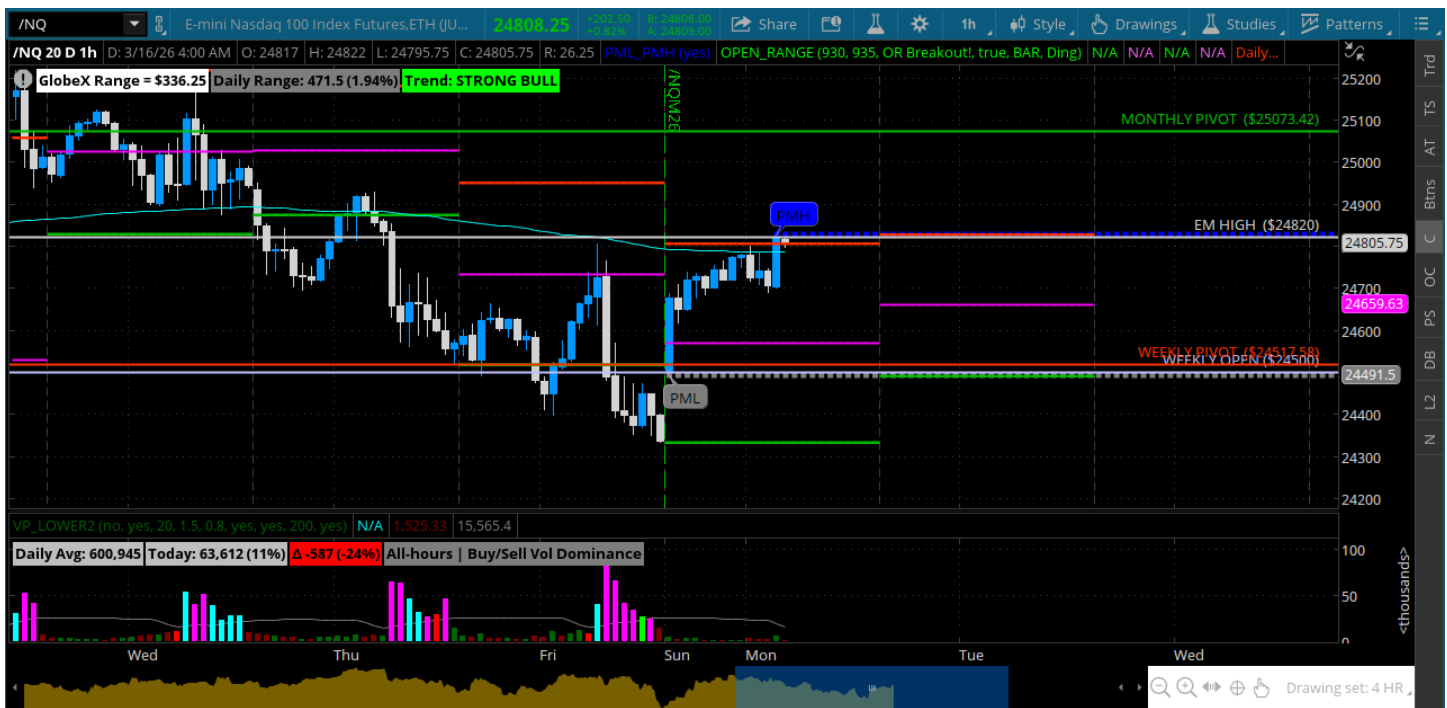
★ Low 6625.00

★ Close 6625.25

**ES (Week Open) 6659.75**

# Pre-Market Charts to Watch

## Monday, March 16, 2026 Pre-Market /NQ 1 Hour Chart



- TOS has rolled to the M contract -- gap is the new contract
- Will this be another sell at the open?
- Crude is still 97 -- will be watching this for a breakout or breakdown
- Bulls need to defend the 24500 weekly open

## Monday, March 16, 2026 Pre-Market /ES 1 Hour Chart



- Contract roll on TOS -- roll gap and push to Fridays high
- Bulls need to defend a test of 6700 and the weekly pivot
- Under weekly pivot bears can go fill the gap
- New week and new contract -- will let it open and see where we are with opening range

*Disclaimer:*

Disclaimer: Neither TheoTrade or any of its officers, directors, employees, other personnel, representatives, agents or independent contractors is, in such capacities, a licensed financial adviser, registered investment adviser, registered broker-dealer or FINRA|SIPC|NFA-member firm. TheoTrade does not provide investment or financial advice or make investment recommendations. TheoTrade is not in the business of transacting trades, nor does TheoTrade agree to direct your brokerage accounts or give trading advice tailored to your particular situation. Nothing contained in our content constitutes a solicitation, recommendation, promotion, or endorsement of any particular security, other investment product, transaction or investment. Trading Futures, Options on Futures, and retail off-exchange foreign currency transactions involves substantial risk of loss and is not suitable for all investors. You should carefully consider whether trading is suitable for you in light of your circumstances, knowledge, and financial resources. You may lose all or more of your initial investment. Opinions, market data, and recommendations are subject to change at any time. Past Performance is not necessarily indicative of future results.