



## *Tony Rago's Pre-Market Playbook*

---

### ★ Overnight Range

- ES 58.25
- NQ 212.00
- VIX 22.72
- Trading the M Contract

★ **Bulls** need to hold above yest closes **6749 and 24872-- long above these**

★ Breakouts are above yesterday's highs **6784 and 25035- aggressive longs** (await for confirmation with a new high and a retest of the highs from above that holds)

★ **Bears** need under overnight lows **short under 6715 and 24728**

★ Breakdown is below yest lows **6656 and 24491 -- aggressive shorts** (wait for

★ confirmation with a new low and a retest of the lows from below that hold)

★ **RANGEBOUND: 2 Way trade long and shorts will work** to get the day done

★ Keep it simple and be patient for confirmation on either side or establish the range if

★ we are going to be rangebound

★ Confirm rally continuation with sustained trade over the 30min IB High and likewise

★ bearish under the IB Low

### ECON:

- 10:00 am Pending home sale

## *Pre-Market Trading Levels for today*

---

### **GLOBEX**

#### **NQ**

★ **HIGH:** 24940.25

★ **LOW:** 24728.25

★ **Bull Case** defend the 24612 to seek the 24633, 24750, 24812, 24833, 24912, 25000, 25106, 25250, 25312, 25333, 25412, 25500

★ **Bear Case** seal the 24912 to seek the 24833, 24812, 24750, 24633, 24612, 24500, 24412, 24333, 24312, 24250, 24106, 24000, 23912

★ **Overnight Range - 153.75**

#### **NQ (Prev. Day)**

★ High 25035.00

★ Low 24491.50

★ Close 24872.25

**NQ (Week Open) 24500.00**

## S&P 500

★ **HIGH** - 6774.00

★ **LOW** - 6715.75

★ **Bull Case:** defend the 6742 to seek the 6750, 6762, 6777, 6788, 6800, 6812, 6817, 6826, 6833, 6850, 6862, 6877

★ **Bear Case:** seal the 6788 to seek the 6777, 6762, 6750, 6742, 6733, 6726, 6717, 6712, 6700, 6688, 6677, 6662, 6650, 6633, 6626, 6617, 6600

★ **Overnight Range** - 58.25

### ES (Prev Day)

★ High 6784.75

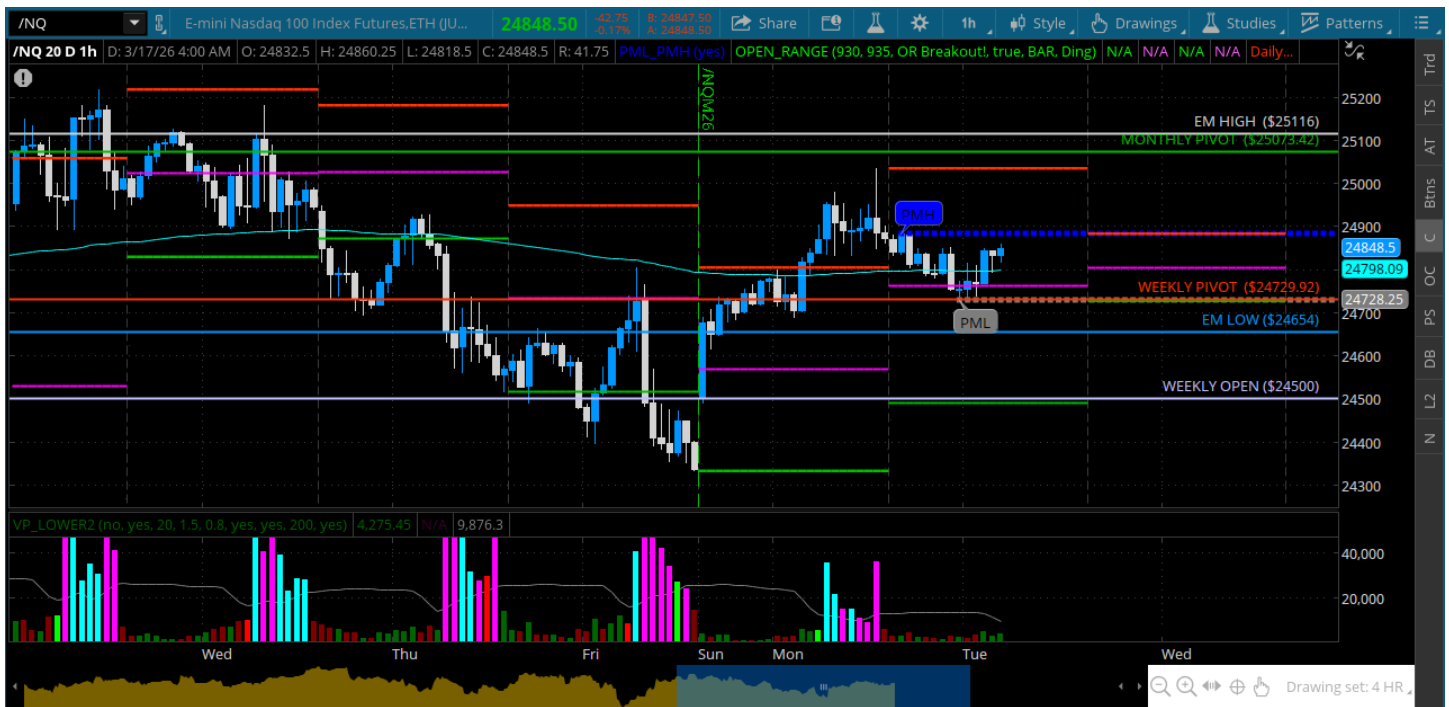
★ Low 6656.00

★ Close 6749.75

**ES (Week Open) 6659.75**

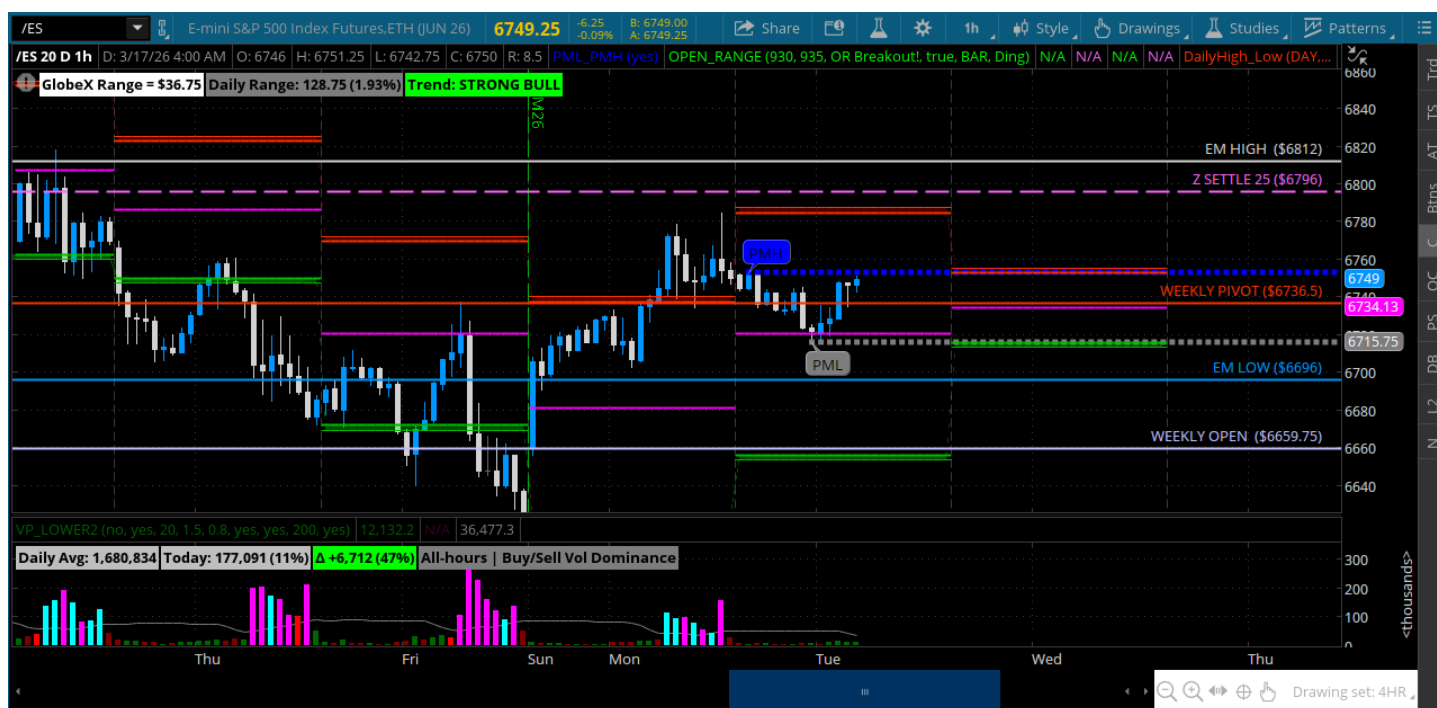
# Pre-Market Charts to Watch

Tuesday, March 17, 2026 Pre-Market /NQ 1 Hour Chart



- Bulls close above weekly pivot so that gives them an advantage
- They need to hold the 24750 on a test and move to the 25000
- Bears need under the weekly pivot and move back to the 24500

## Tuesday, March 17, 2026 Pre-Market /ES 1 Hour Chart



- Bulls still trying to convert weekly pivot and get back to the 6788 and 6800
- That is the bull/bear for today -- above weekly pivot bulls can reach for yesterdays highs
- Below weekly pivot puts the 6700 back into view
- Tomorrow is a FED day so we may have a quiet tape

*Disclaimer:*

Disclaimer: Neither TheoTrade or any of its officers, directors, employees, other personnel, representatives, agents or independent contractors is, in such capacities, a licensed financial adviser, registered investment adviser, registered broker-dealer or FINRA|SIPC|NFA-member firm. TheoTrade does not provide investment or financial advice or make investment recommendations. TheoTrade is not in the business of transacting trades, nor does TheoTrade agree to direct your brokerage accounts or give trading advice tailored to your particular situation. Nothing contained in our content constitutes a solicitation, recommendation, promotion, or endorsement of any particular security, other investment product, transaction or investment. Trading Futures, Options on Futures, and retail off-exchange foreign currency transactions involves substantial risk of loss and is not suitable for all investors. You should carefully consider whether trading is suitable for you in light of your circumstances, knowledge, and financial resources. You may lose all or more of your initial investment. Opinions, market data, and recommendations are subject to change at any time. Past Performance is not necessarily indicative of future results.