



Tony Rago's Pre-Market Playbook

★ Overnight Range

- ES 71.00
- NQ 313.75
- VIX 26.27

- ★ **Bulls** need to hold above yest closes **6632 and 24400-- long above these**
- ★ Breakouts are above yesterday's highs **6748 and 24763- aggressive longs** (await for confirmation with a new high and a retest of the highs from above that holds)
- ★ **Bears** need under overnight lows **short under 6582 and 24193**
- ★ Breakdown is below yest lows **6483 and 23772 -- aggressive shorts** (wait for confirmation with a new low and a retest of the lows from below that hold)
- ★ **RANGEBOUND: 2 Way trade long and shorts will work** to get the day done
- ★ Keep it simple and be patient for confirmation on either side or establish the range if we are going to be rangebound
- ★ Confirm rally continuation with sustained trade over the 30min IB High and likewise
- ★ bearish under the IB Low

ECON:

- 8:30 am U.S. productivity (revision)
- 9:45 am S&P flash U.S. services PMI
- 6:30 pm Federal Reserve governor Michael Barr speaks

Pre-Market Trading Levels for today

GLOBEX

NQ

★ **HIGH:** 24507.25

★ **LOW:** 24193.50

★ **Bull Case** defend the 24250 to seek the 24312, 24333, 24412, 24500, 24612, 24633, 24750, 24812, 24833, 24912, 25000, 25106, 25250, 25312, 25333, 25412, 25500

★ **Bear Case** seal the 24812 to seek the 24750, 24633, 24612, 24500, 24412, 24333, 24312, 24250, 24106, 24000, 23912

★ **Overnight Range - 313.75**

NQ (Prev. Day)

★ High 24763.00

★ Low 23772.50

★ Close 24400.00

NQ (Week Open) 23902.00

S&P 500

★ **HIGH** - 6653.50

★ **LOW** - 6582.50

★ **Bull Case:** defend the 6577 to seek the 6588, 6600, 6612, 6617, 6626, 6633, 6650, 6662, 6677, 6688, 6700, 6712, 6717, 6726, 6733, 6750, 6762, 6777

★ **Bear Case:** seal the 6712 to seek the 6700, 6688, 6677, 6662, 6650, 6642, 6633, 6626, 6617, 6612, 6500, 6588, 6577, 6562

★ **Overnight Range** - 71.00

ES (Prev Day)

★ High 6748.00

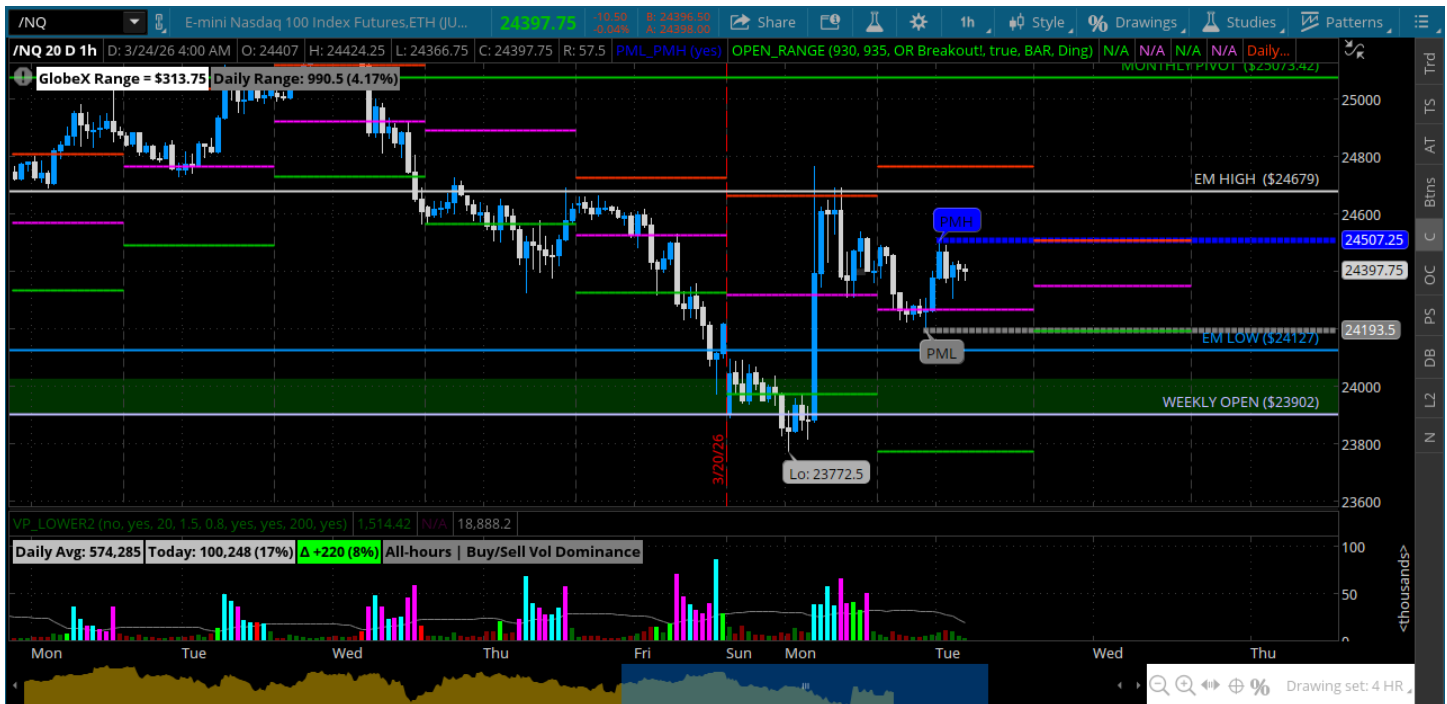
★ Low 6483.50

★ Close 6632.75

ES (Week Open) 6510.00

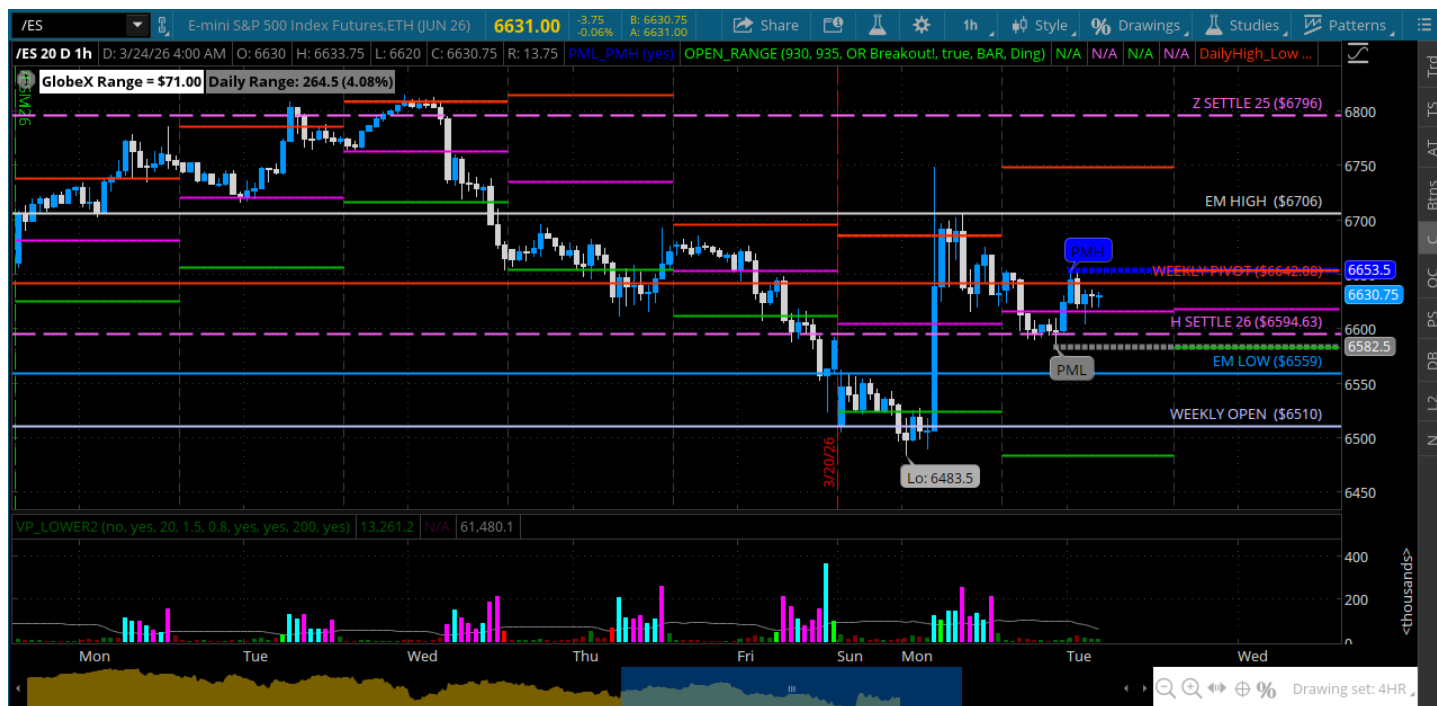
Pre-Market Charts to Watch

Tuesday, March 24, 2026 Pre-Market /NQ 1 Hour Chart



- Inside the big bar from yesterday's pre-market move
- Breakout is above the high 24763 and breakdown is below 23875
- Its basically 1000 handles so we can hang here until we get a catalyst to break it
- Plenty of potential catalysts exist so remain vigilant

Tuesday, March 24, 2026 Pre-Market /ES 1 Hour Chart



- Inside yesterdays range - high 6748 x 6638
- Bulls can reach for the 6700 above the H SETTLE
- Bears can reach for 6500 below the H Settle
- Trade the range

Disclaimer:

Disclaimer: Neither TheoTrade or any of its officers, directors, employees, other personnel, representatives, agents or independent contractors is, in such capacities, a licensed financial adviser, registered investment adviser, registered broker-dealer or FINRA|SIPC|NFA-member firm. TheoTrade does not provide investment or financial advice or make investment recommendations. TheoTrade is not in the business of transacting trades, nor does TheoTrade agree to direct your brokerage accounts or give trading advice tailored to your particular situation. Nothing contained in our content constitutes a solicitation, recommendation, promotion, or endorsement of any particular security, other investment product, transaction or investment. Trading Futures, Options on Futures, and retail off-exchange foreign currency transactions involves substantial risk of loss and is not suitable for all investors. You should carefully consider whether trading is suitable for you in light of your circumstances, knowledge, and financial resources. You may lose all or more of your initial investment. Opinions, market data, and recommendations are subject to change at any time. Past Performance is not necessarily indicative of future results.