



## *Tony Rago's Pre-Market Playbook*

---

### ★ Overnight Range

- ES 72.75
- NQ 352.25
- VIX 27.64

- ★ **Bulls** need to hold above yest closes **6641 and 24367-- long above these**
- ★ Breakouts are above yesterday's highs **6684 and 24540- aggressive longs** (await for confirmation with a new high and a retest of the highs from above that holds)
- ★ **Bears** need under overnight lows **short under 6581 and 24107**
- ★ Breakdown is below yest lows **6616 and 24286 -- aggressive shorts** (wait for confirmation with a new low and a retest of the lows from below that hold)
- ★ **RANGEBOUND: 2 Way trade long and shorts will work** to get the day done
- ★ Keep it simple and be patient for confirmation on either side or establish the range if we are going to be rangebound
- ★ Confirm rally continuation with sustained trade over the 30min IB High and likewise
- ★ bearish under the IB Low

### ECON:

- 8:30 am Initial jobless claims

## *Pre-Market Trading Levels for today*

---

### GLOBEX

#### NQ

★ **HIGH:** 24421.25

★ **LOW:** 24069.00

★ **Bull Case** defend the 24000 to seek the 24106, 24250, 24312, 24333, 24412, 24500, 24612, 24633, 24750, 24812, 24833, 24912, 25000, 25106, 25250, 25312, 25333, 25412, 25500

★ **Bear Case** seal the 24500 to seek the 24412, 24333, 24312, 24250, 24106, 24000, 23912

★ **Overnight Range - 314.25**

#### NQ (Prev. Day)

★ High 24539.75

★ Low 24286.50

★ Close 24367.75

**NQ (Week Open) 23902.00**

## S&P 500

★ **HIGH** - 6647.00

★ **LOW** - 6574.25

★ **Bull Case:** defend the 6612 to seek the 6617, 6626, 6633, 6650, 6662, 6677, 6688, 6700, 6712, 6717, 6726, 6733, 6750, 6762, 6777

★ **Bear Case:** seal the 6712 to seek the 6700, 6688, 6677, 6662, 6650, 6642, 6633, 6626, 6617, 6612, 6500, 6588, 6577, 6562

★ **Overnight Range** - 46.75

### ES (Prev Day)

★ High 6684.75

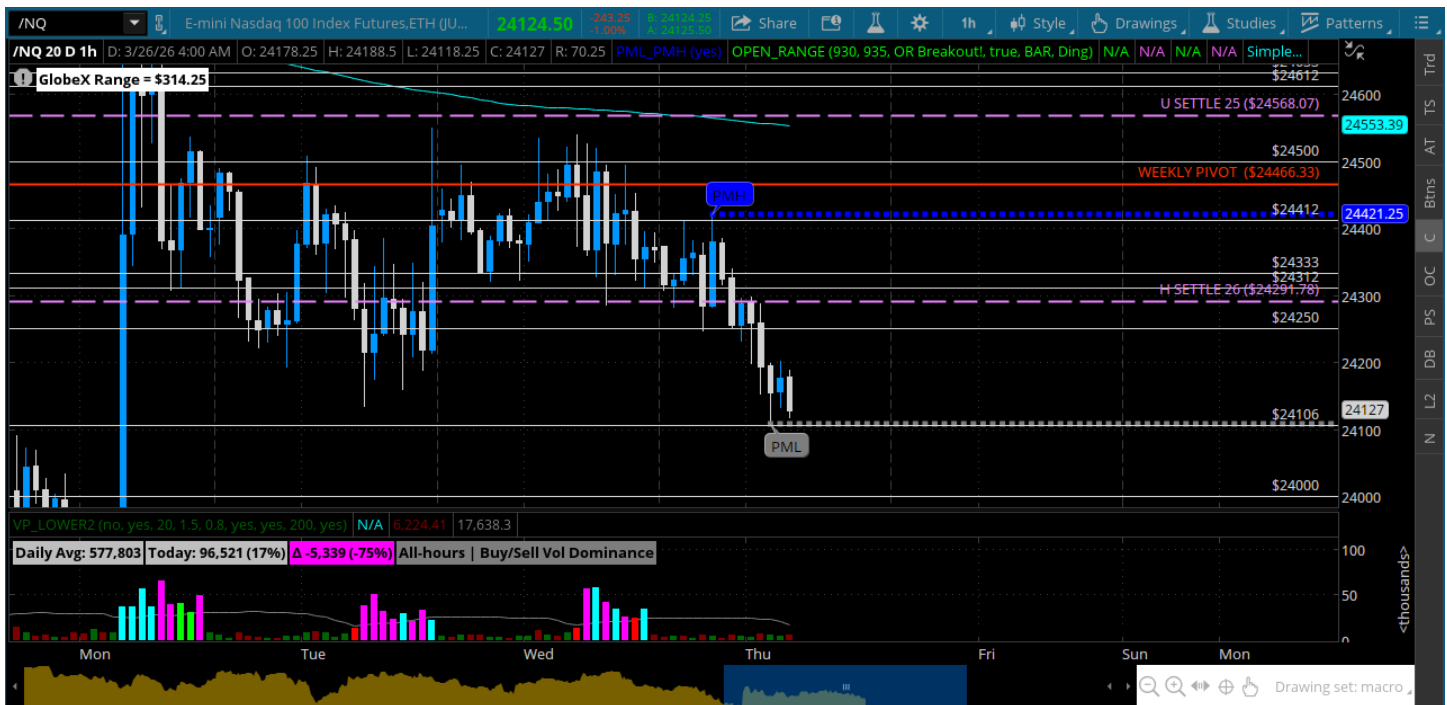
★ Low 6616.50

★ Close 6641.00

**ES (Week Open) 6510.00**

## Pre-Market Charts to Watch

Thursday, March 26, 2026 Pre-Market /NQ 1 Hour Chart



- Still trading inside the big Monday bar and looks like we are targeting a test of the lows of that bar 23875
- Weekly open is down here as well -- will be watching for a sweep of that low and reaction
- The news flow is still affecting the tape and pops continue to get sold
- That is the plan until that changes

## Thursday, March 26, 2026 Pre-Market /ES 1 Hour Chart



- Back to the 6600 and pushing below
- Will be focused on how we trade around the H SETTLE
- Below that starts to open the Monday low of that big bar and the weekly open 6510
- Still a sell rallies tape

*Disclaimer:*

Disclaimer: Neither TheoTrade or any of its officers, directors, employees, other personnel, representatives, agents or independent contractors is, in such capacities, a licensed financial adviser, registered investment adviser, registered broker-dealer or FINRA|SIPC|NFA-member firm. TheoTrade does not provide investment or financial advice or make investment recommendations. TheoTrade is not in the business of transacting trades, nor does TheoTrade agree to direct your brokerage accounts or give trading advice tailored to your particular situation. Nothing contained in our content constitutes a solicitation, recommendation, promotion, or endorsement of any particular security, other investment product, transaction or investment. Trading Futures, Options on Futures, and retail off-exchange foreign currency transactions involves substantial risk of loss and is not suitable for all investors. You should carefully consider whether trading is suitable for you in light of your circumstances, knowledge, and financial resources. You may lose all or more of your initial investment. Opinions, market data, and recommendations are subject to change at any time. Past Performance is not necessarily indicative of future results.