



Tony Rago's Pre-Market Playbook

★ Overnight Range

- ES 79.25
- NQ 367.75
- VIX 29.72 **HIGH VOL**

- ★ **Bulls** need to hold above yest closes **6535 and 23822-- long above these**
- ★ Breakouts are above yesterday's highs **6647 and 24421- aggressive longs** (await for confirmation with a new high and a retest of the highs from above that holds)
- ★ **Bears** need under overnight lows **short under 6489 and 23608**
- ★ Breakdown is below yest lows **6517 and 23763 -- aggressive shorts** (wait for confirmation with a new low and a retest of the lows from below that hold)
- ★ **RANGEBOUND: 2 Way trade long and shorts will work** to get the day done
- ★ Keep it simple and be patient for confirmation on either side or establish the range if we are going to be rangebound
- ★ Confirm rally continuation with sustained trade over the 30min IB High and likewise
- ★ bearish under the IB Low

ECON:

- 0:00 am Consumer sentiment (final)
- 10:30 am Philadelphia Fed President Anna Paulson speech
- 11:00 am Richmond Fed President Tom Barkin speech

Pre-Market Trading Levels for today

GLOBEX

NQ

★ **HIGH:** 23976.00

★ **LOW:** 23608.25

★ **Bull Case** defend the 23500 to seek the 23612, 23633, 23750, 23812, 23833, 23912, 24000, 24106, 24250, 24312, 24333, 24412, 24500

★ **Bear Case** seal the 24106 to seek the 24000, 23912, 23833, 23812, 23750, 23633, 23612, 23500, 23412, 23333, 23312, 23250, 23106, 23000

★ **Overnight Range - 367.75**

NQ (Prev. Day)

★ High 24421.25

★ Low 23763.25

★ Close 23822.00

NQ (Week Open) 23902.00

S&P 500

★ **HIGH** - 6568.50

★ **LOW** - 6489.25

★ **Bull Case:** defend the 6477 to seek the 6488, 6500, 6512, 6517, 6526, 6533, 6550, 6562, 6577. 6588, 6600

★ **Bear Case:** seal the 6588 to seek the 6577, 6562, 6550, 6542, 6533, 6526, 6517, 6512, 6400, 6488, 6477, 6462, 6450, 6433, 6426, 6417

★ **Overnight Range** - 79.25

ES (Prev Day)

★ High 6647.00

★ Low 6517.00

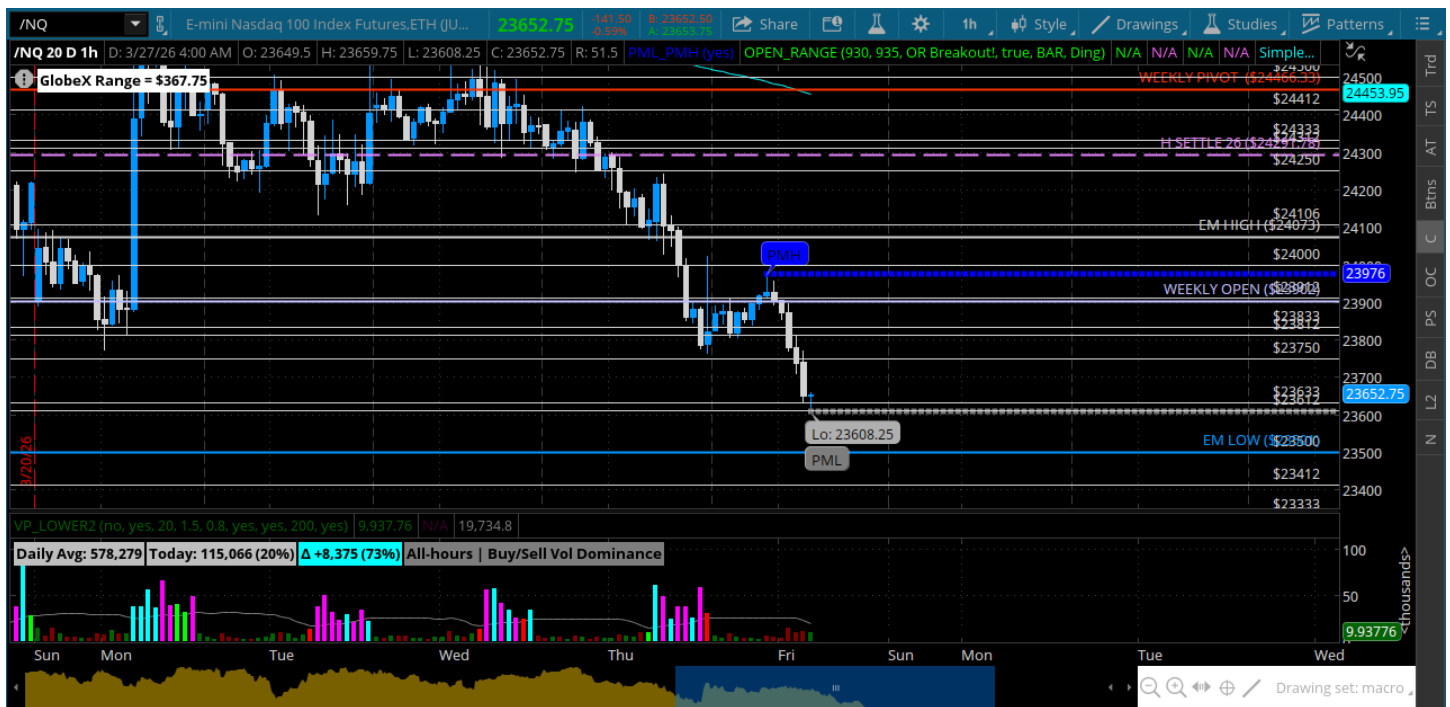
★ Close 6535.50

★

ES (Week Open) 6510.00

Pre-Market Charts to Watch

Friday, March 27, 2026 Pre-Market /NQ 1 Hour Chart



- We are breaking the big sideways range from November
- There is not much stopping it at the moment and being a Friday it could get very slippery to the downside here
- VIX is over 29 so expect big vol and big waves -- be careful today

Friday, March 27, 2026 Pre-Market /ES 1 Hour Chart



- More weakness overnight and back to the weekly open
- We have broken the sideways zone that we have been in since November
- Will be watching how we deal with a 6500 test
- The bounces continue to get sold be careful selling the lows - let it bounce and reload

Disclaimer:

Disclaimer: Neither TheoTrade or any of its officers, directors, employees, other personnel, representatives, agents or independent contractors is, in such capacities, a licensed financial adviser, registered investment adviser, registered broker-dealer or FINRA|SIPC|NFA-member firm. TheoTrade does not provide investment or financial advice or make investment recommendations. TheoTrade is not in the business of transacting trades, nor does TheoTrade agree to direct your brokerage accounts or give trading advice tailored to your particular situation. Nothing contained in our content constitutes a solicitation, recommendation, promotion, or endorsement of any particular security, other investment product, transaction or investment. Trading Futures, Options on Futures, and retail off-exchange foreign currency transactions involves substantial risk of loss and is not suitable for all investors. You should carefully consider whether trading is suitable for you in light of your circumstances, knowledge, and financial resources. You may lose all or more of your initial investment. Opinions, market data, and recommendations are subject to change at any time. Past Performance is not necessarily indicative of future results.