



Tony Rago's Pre-Market Playbook

★ Overnight Range

- ES 62.00
- NQ 301.25
- VIX 24.52

★ **Bulls** need to hold above yest closes **6567 and 23905-- long above these**

★ Breakouts are above yesterday's highs **6583 and 23975- aggressive longs** (await for confirmation with a new high and a retest of the highs from above that holds)

★ **Bears** need under overnight lows **short under 6561 and 22961**

★ Breakdown is below yest lows **6353 and 22961 -- aggressive shorts** (wait for

★ confirmation with a new low and a retest of the lows from below that hold)

★ **RANGEBOUND: 2 Way trade long and shorts will work** to get the day done

★ Keep it simple and be patient for confirmation on either side or establish the range if

★ we are going to be rangebound

★ Confirm rally continuation with sustained trade over the 30min IB High and likewise

★ bearish under the IB Low

ECON:

- 8:30 am U.S. retail sales (delayed report)
- 8:30 am Retail sales minus autos
- 9:05 am St. Louis Fed President Alberto Musalem speaks
- 9:10 am Fed governor Michael Barr speaks
- 9:45 am S&P final U.S. manufacturing PMI
- 10:00 am ISM manufacturing March
- 10:00 am Business inventories (delayed report)

Pre-Market Trading Levels for today

GLOBEX

NQ

★ **HIGH:** 24181.25

★ **LOW:** 23880.00

★ **Bull Case** defend the 23750 to seek the 23812, 23833, 23912, 24000, 24106, 24250, 24312, 24333, 24412, 24500

★ **Bear Case** seal the 24312 to seek the 24250, 24106, 24000, 23912, 23833, 23812, 23750, 23633, 23612, 23500, 23412, 23333, 23312, 23250, 23106, 23000

★ **Overnight Range - 301.25**

NQ (Prev. Day)

★ High 23975.25

★ Low 22961.50

★ Close 23905.50

NQ (Week Open) 23189.50

S&P 500

★ **HIGH** - 6623.50

★ **LOW** - 6561.00

★ **Bull Case:** defend the 6550 to seek the 6562, 6577, 6588, 6600, 6612, 6617, 6626, 6633, 6650, 6662, 6677. 6688, 6700

★ **Bear Case:** seal the 6642 to seek the 6633, 6626, 6617, 6612, 6600, 6588, 6577, 6562, 6550, 6533, 6526, 6517, 6512, 6500, 6488, 6477, 6462, 6450, 6442, 6433

★ **Overnight Range** - 62.50

ES (Prev Day)

★ High 6583.25

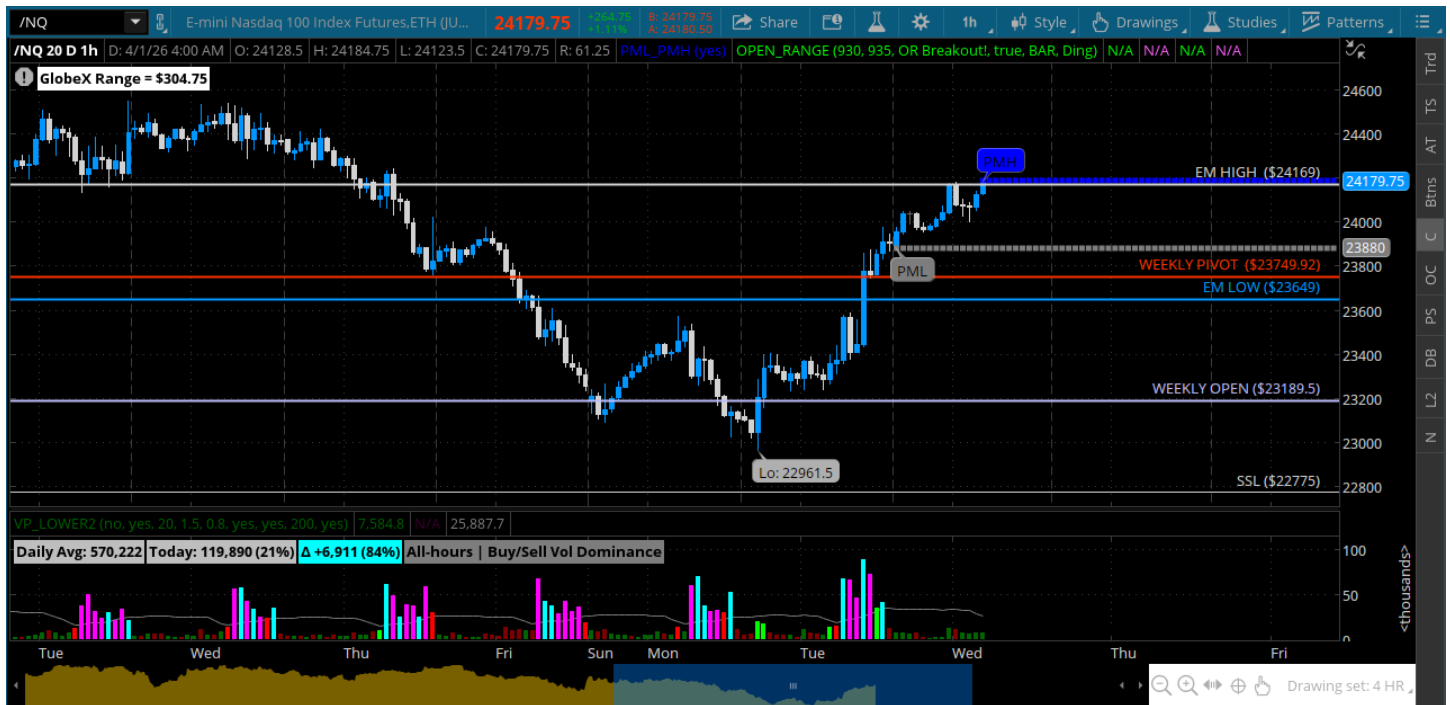
★ Low 6353.25

★ Close 6567.50

ES (Week Open) 6380.00

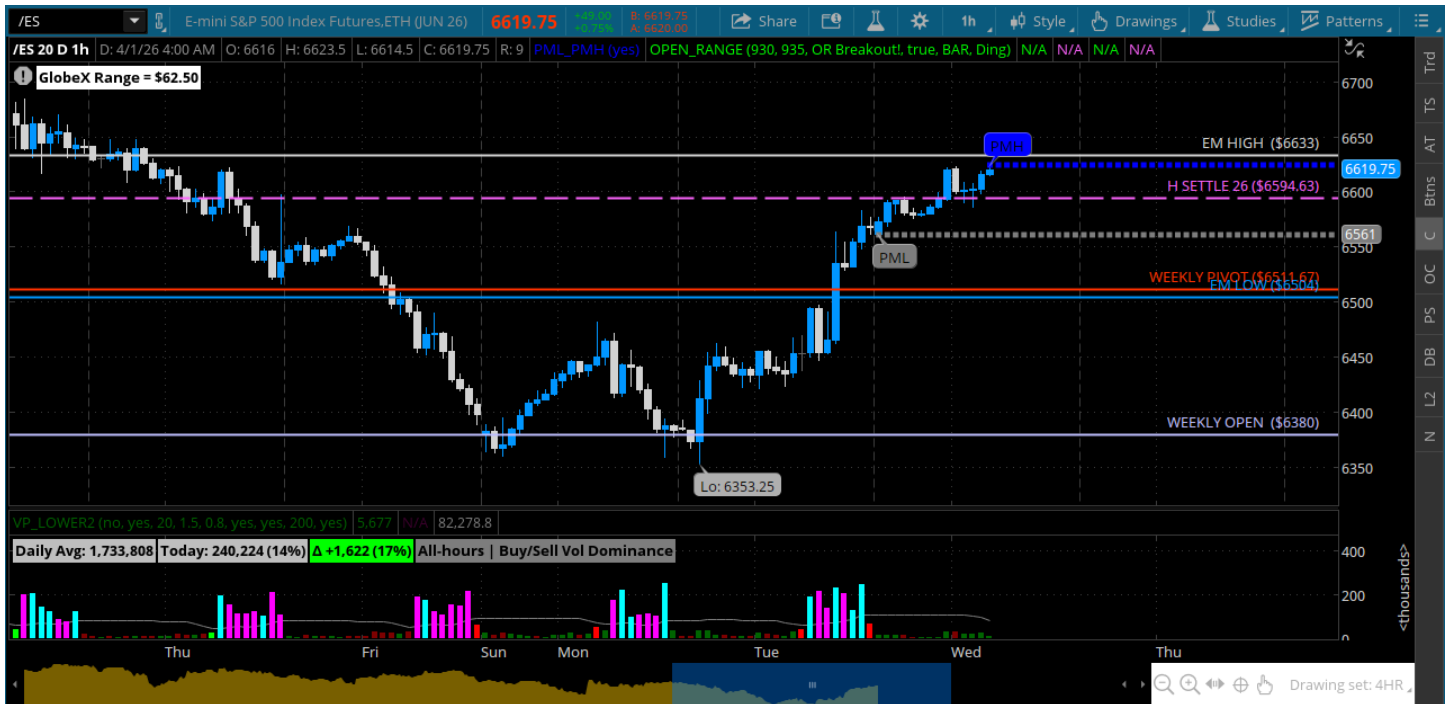
Pre-Market Charts to Watch

Wednesday, April 1, 2026 Pre-Market /NQ 1 Hour Chart



- We have a rally that is trying to stick
- Resistance up here at 24250 that the bulls will need to chew through
- The daily candle was over 1000 handles
- Would like to see some retracement for clues - will bulls defend pullbacks or is this a reload for bears?
- Lets see how we open and trade what we see

Wednesday, April 1, 2026 Pre-Market /ES 1 Hour Chart



- Rally back to the 6600s -- market took a headline and ran with it
- May be too far too fast so will be looking for a pullback - ideally to weekly pivot
- Crude is now under 100 -- if that can keep coming in the rally may stick
- VIX is back to 25
- Headline risk is still out there so stay on your toes

Disclaimer:

Disclaimer: Neither TheoTrade or any of its officers, directors, employees, other personnel, representatives, agents or independent contractors is, in such capacities, a licensed financial adviser, registered investment adviser, registered broker-dealer or FINRA|SIPC|NFA-member firm. TheoTrade does not provide investment or financial advice or make investment recommendations. TheoTrade is not in the business of transacting trades, nor does TheoTrade agree to direct your brokerage accounts or give trading advice tailored to your particular situation. Nothing contained in our content constitutes a solicitation, recommendation, promotion, or endorsement of any particular security, other investment product, transaction or investment. Trading Futures, Options on Futures, and retail off-exchange foreign currency transactions involves substantial risk of loss and is not suitable for all investors. You should carefully consider whether trading is suitable for you in light of your circumstances, knowledge, and financial resources. You may lose all or more of your initial investment. Opinions, market data, and recommendations are subject to change at any time. Past Performance is not necessarily indicative of future results.